



Sunshine  
PV Corp.



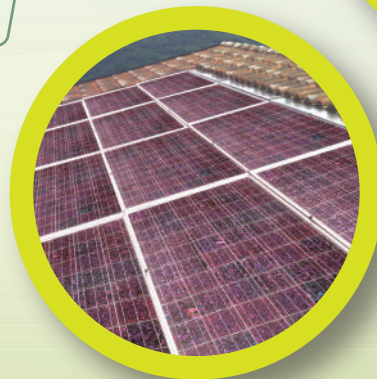
# Rainbow<sup>®</sup> Cell

## Diamond Series

6" Multicrystalline Solar Cell

### Physical Characteristics

Dimension	156 mm x 156 mm $\pm$ 0.5 mm
Thickness (Si)	200 $\mu$ m $\pm$ 30 $\mu$ m
Front Side (-)	Silicon nitride anti-reflection coating 1.5 mm silver busbar
Back Side (+)	Full surface aluminum back surface field 2.5 mm (silver) soldering pads

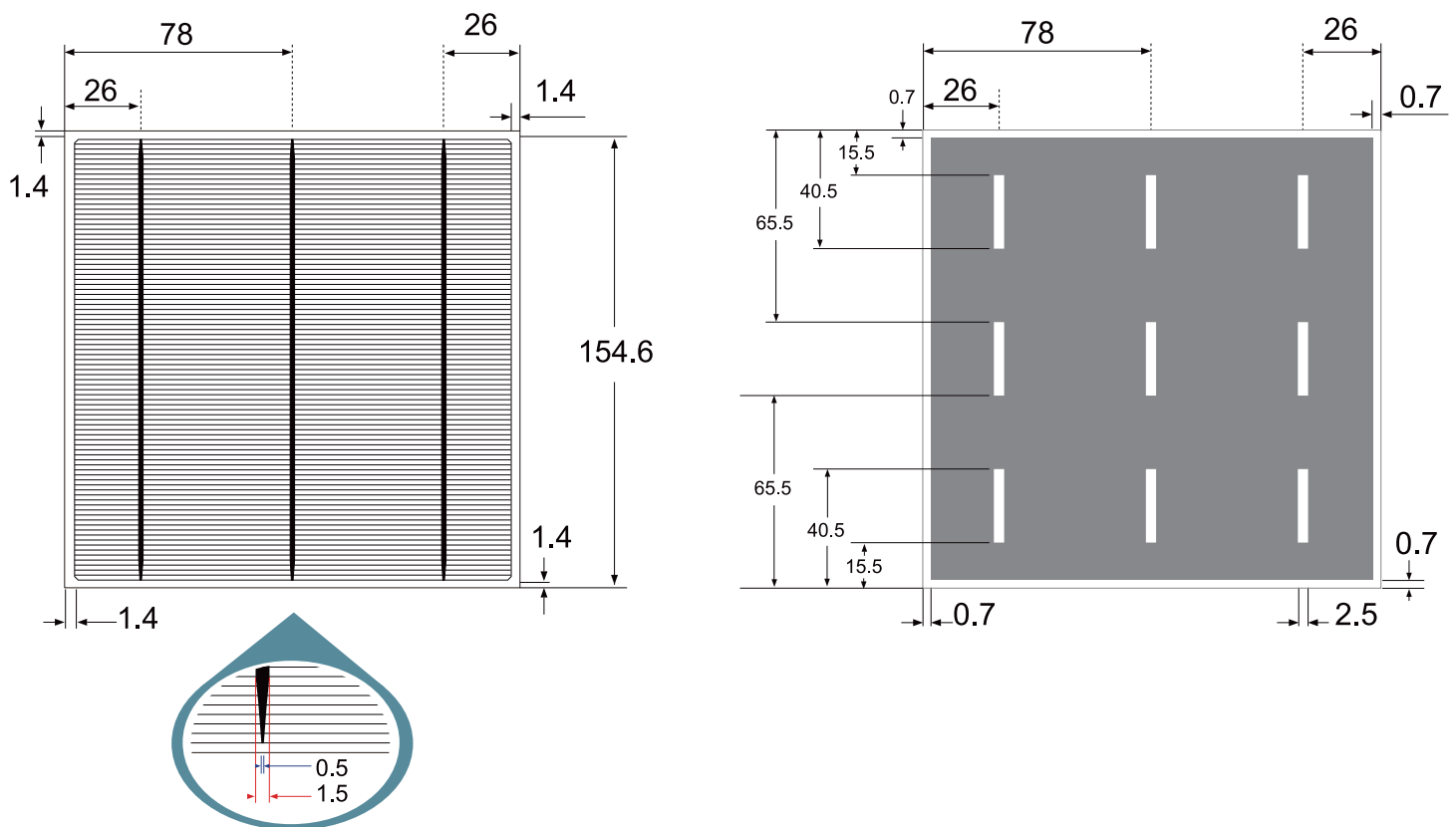


## Diamond Series 6" Multicrystalline Solar Cell

Product Name	Est. Module Power Output (Watt)	* Rated Power (after lamination) (Wp)	*Rated Power (Wp)	*Maximum Power Voltage (V)	*Open Circuit Voltage (V)	*Maximum Power Current (A)	*Short Circuit Current (A)
Diamond Green	240	4.000	3.894	0.526	0.626	7.41	7.84
Diamond Gold	235	3.917	3.481	0.529	0.625	6.58	7.01
Rose Red	240	4.000	3.845	0.527	0.626	7.30	7.72
Diamond Black	220	3.667	3.600	0.527	0.626	6.83	7.28

Test condition: 1000 W/m<sup>2</sup>, AM1.5, 25 °C Power measuring tolerance: ± 1.5 % rel.

### Front and Back of the Cell and Reference Dimensions



\*Data & drawing for reference only.

