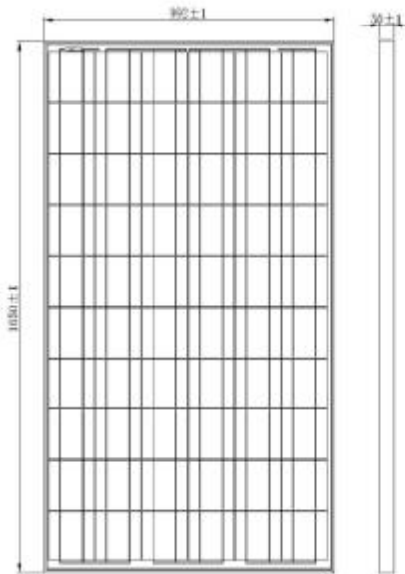


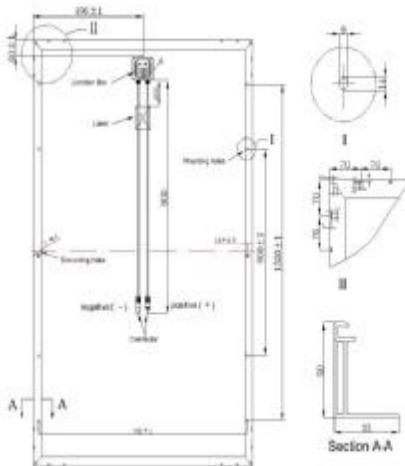
HS-P6 60-210/215/220/225/230/235/240/245/250



Electrical Data

	210W	215W	220W	225W	230W	235W	240W	245W	250W
Nominal Maximum Power at STC(Pmax)	210W	215W	220W	225W	230W	235W	240W	245W	250W
Optimum Operating Voltage(Vmp)	29.0	29.0	29.0	29.5	29.5	30.0	30.0	30.0	30.5
Optimum Operating Current(Imp)	7.24	7.41	7.59	7.63	7.80	7.83	8.0	8.17	8.20
Open Circuit Voltage(Voc)	36.0	36.0	36.0	36.6	36.6	37.2	37.2	37.2	37.8
Short Circuit Current(Isc)	7.82	8.01	8.19	8.24	8.42	8.46	8.65	8.74	8.85
Operating Temperature	-40℃+85℃								
Power Tolerance	± 3%								
Maximum System Voltage	1000V(IEC)/600(UL)								
Maximum Series Fuse Rating	10A								
Temperature Coefficient	Pmax	-0.47%/℃							
	Voc	-0.351%/℃							
	ISC	0.035%/℃							
	NOCT	45℃ ± 2℃							

Under Standard: Test Conditions (STC) of Irradiance of 1000W/m², Spectrum AM 1.5 and cell temperature of 25℃



Mechanical Data

Cell Type	156X156mm Poly-Crystalline
Cell Thickness(μm)	190±20
Cell Arrangement	60pc(6X10)
Individual Area (cm2)	243.3
Dimensions	1640X992X40(mm)
Junction Box	IP65
Weight	19.5kg
Front Cover	Tempered Glass
Frame Materia	Anodized Aluminium Alloy
Standard Packing (Modules per Pallet)	20pcs

Safety and Warranty

Fire safety class	C Class
Product Warranty	25 years Limited Product Warranty
Module Power Output Warranty	10 years Limited Warranty of 90%Power Output
	25 years Limited Warranty of 80%Power Output