

220 - 250 Watt

Polycrystalline photovoltaic module (alu and black)

ZXP6-60 is ZNSHINE SOLAR's powerful 60-celled polycrystalline panel. Versatile and adaptable, with a power output ranging from 220 Wp up to 250 Wp, it is perfect for residential rooftop systems as well as for ground-mounted installations.



High module conversion efficiency up to 15.27 %



Insured output warranty of 25 years



Green Certification: PV-Cycle, Carbon Footprint and RoHS



Without Potential-Induced Degradation (PID-free)



Resistant against ammonia and salt mist



Certified to withstand extreme snowloads of 5.400 Pascal



This module is made of reliable and carefully selected components. With a 25-year output warranty and a 10-year workmanship warranty, ZXP6-60 meets rigorous quality controls and international standard such as ISO 9001, ISO 14001 and OHSAS 18001. The panel is tested by widely acknowledged certifying institutions such as TÜV Süd. The recycling of this module at the product's end of life follows the prescriptions of PV-CYCLE Association certification.

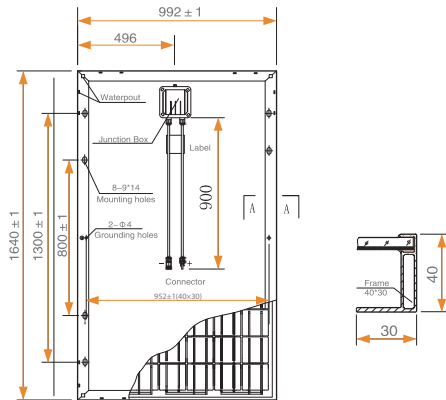


25 years power output guarantee insured by PowerGuard

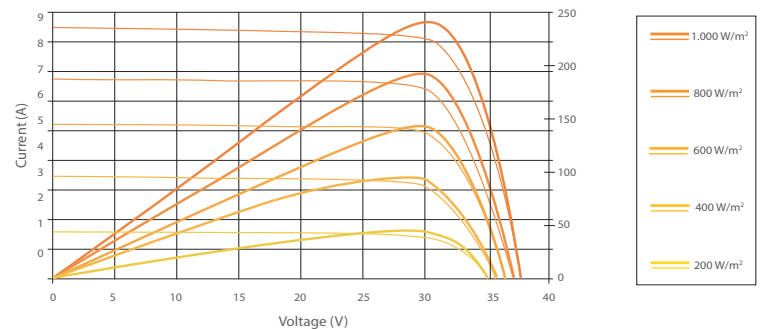
ZNSHINE SOLAR is one of the first manufacturers whose modules participate in the PowerGuard insurance programme, guaranteeing an output of 90% for 10 years and of 80% for 25 years even in the unlikely case of manufacturer's insolvency.



Dimensions of the PV module



I-V Curves of the PV module



Electrical Data

ZXP6-60-220/P ZXP6-60-225/P ZXP6-60-230/P ZXP6-60-235/P ZXP6-60-240/P ZXP6-60-245/P ZXP6-60-250/P

| | ZXP6-60-220/P | ZXP6-60-225/P | ZXP6-60-230/P | ZXP6-60-235/P | ZXP6-60-240/P | ZXP6-60-245/P | ZXP6-60-250/P |
|--|---------------|---------------|---------------|---------------|---------------|---------------|---------------|
| Nominal Power Watt P_{max} (W_p) | 220 | 225 | 230 | 235 | 240 | 245 | 250 |
| Power Output Tolerance P_{max} (%) | 0 ~ +3 | 0 ~ +3 | 0 ~ +3 | 0 ~ +3 | 0 ~ +3 | 0 ~ +3 | 0 ~ +3 |
| Maximum Power Voltage V_{max} (V) | 28.95 | 29.15 | 29.35 | 29.55 | 29.75 | 29.95 | 30.15 |
| Maximum Power Current I_{MPP} (A) | 7.60 | 7.72 | 7.84 | 7.95 | 8.07 | 8.18 | 8.29 |
| Open Circuit Voltage V_{oc} (V) | 36.87 | 37.04 | 37.21 | 37.38 | 37.55 | 37.72 | 37.89 |
| Short Circuit Current I_{sc} (A) | 8.13 | 8.22 | 8.31 | 8.39 | 8.47 | 8.53 | 8.61 |
| Module Efficiency η_m (%) | 13.52 | 13.83 | 14.14 | 14.44 | 14.75 | 15.06 | 15.37 |
| Cell Efficiency η_c (%) | 15.13 | 15.50 | 15.88 | 16.26 | 16.64 | 17.02 | 17.44 |

Mechanical Data

| | |
|-------------------|--|
| Solar Cells | Poly 156 × 156 mm |
| Cells Orientation | 60 (6 × 10) |
| Module Dimensions | 1640 × 992 × 40 mm |
| Weight | 19.5 kg |
| Glass | High transparency, low Iron, AR-coating, tempered glass 3.2 mm |
| Frame | Anodized Aluminium alloy. Frame and backside in alu or black |
| Junction Box | IP 65 |
| Cables/Connector | 4 mm ² , 900 mm, MC4-compatible |
| Number of Diodes | 6 |

Temperature Ratings

| | |
|--------------------------------------|---------------|
| Nominal Operating Cell Temperature | 45 °C (±2 °C) |
| Temperature Coefficient of P_{MPP} | -0.42 %/K |
| Temperature Coefficient of V_{oc} | -0.33 %/K |
| Temperature Coefficient of I_{sc} | 0.06 %/K |

Working Conditions

| | |
|-------------------------------|--------------------|
| Maximum System Voltage | 1000 V DC (TÜV) |
| Operating Temperature | from -40 to +85 °C |
| Maximum Series Fuse | 15 A |
| Maximum Load (Snow/Wind) | 5400 Pa / 2400 Pa |
| Ammonia-/Salt Mist Resistance | IEC 62716, 61701 ✓ |

Warranty Information

- 10 years workmanship warranty
- 10 years warranty at 90% power output
- + further 15 years warranty at 80% power output

Packaging Information

| | |
|-----------------------------|------------------|
| Module per Box | 28 pcs. (40 mm) |
| Module per 40' HQ Container | 784 pcs. (40 mm) |

¹ Measurement Tolerance STC: ± 3% (P_{max}), ± 10% (V_{max} , I_{MPP} , V_{oc} , I_{sc}). Values at Standard Test Conditions STC (Air Mass AM 1.5, Irradiance 1000 W/m², Cell Temperature 25 °C)
 Remark: Please read safety and installation instructions before using the product | Subject to change without prior notice © ZNSHINE SOLAR 2013 | Versionscode: ZXP6-60-1307.E

ZNSHINE PV-Tech Co., Ltd

#1 Zhixi Industry Zone
 Jintan, Jiangsu Province, 213251
 People's Republic of China

Tel: +86 519 8244 9237
 Fax: +86 519 8244 9170
 E-Mail: info@znshinesolar.com

