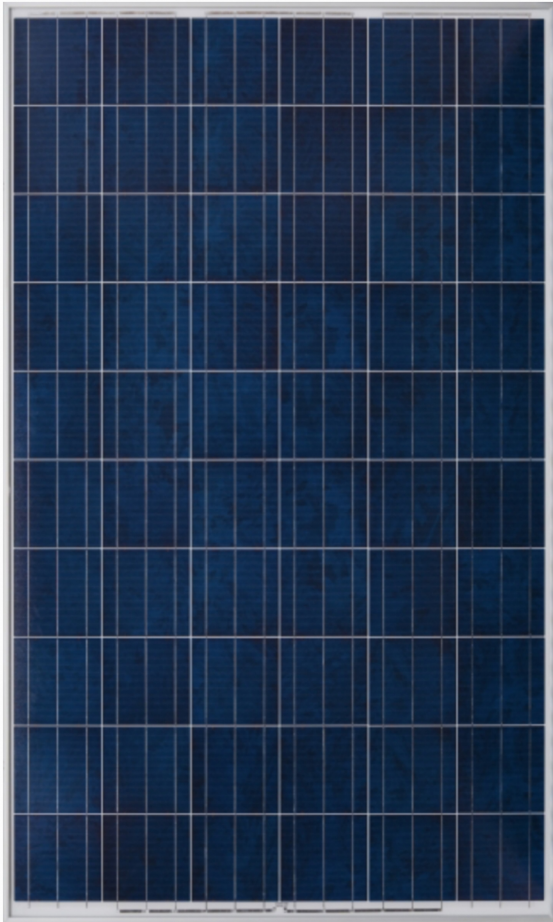


BROPV-P260 SERIES

Polycrystalline Solar Modules

(60 Cells / 240 – 260 / 3BB)



ABOUT BROPV

BroPV Tech Company Limited is a leading PV manufacturer, which markets its products under the brand of “BROPV”. With over 1 GW module manufacturing capacity and accumulatively 2 GW shipments to the global market, BroPV has become a fully experienced module supplier. With the established sales channel and aftersales service system, BroPV is ready to provide the best quality product and best services to all of our customers globally.

KEY FEATURES



Tight positive power tolerance of 0W to +5W ensures you receive modules at or above nameplate power and contributes to minimizing module mismatch losses leading to improved system yield



- 10-year limited product warranty*
- Limited power warranty1: 10 years at 91.2% of the minimal rated power output, 25 years at 80.7% of the minimal rated power output



Excellent mechanical load resistance
- Certified to withstand high wind loads up to 2400Pa
- Certified to withstand snow loads up to 5400Pa



- Anti-reflective and anti-soiling surface reduces power loss from dust
- Salt mist corrosion resistant
- Ammonia corrosion resistant



- Fully conform to certification and regulatory standards
- Potential Induced Degradation (PID) Resistant**
- Modules sorted by current to improve system performance

COMPREHENSIVE CERTIFICATES

- IEC 61215, IEC 61730, UL1703, CEC Listed, MCS and CE
- ISO 9001: 2008: Quality management systems
- ISO 14001: 2004: Environmental management systems
- BS OHSAS 18001: 2007: Occupational health and safety management systems



Specifications subject to technical changes and tests. BROPV reserves the right of final interpretation

WWW.BROPV.COM

ELECTRICAL PERFORMANCE

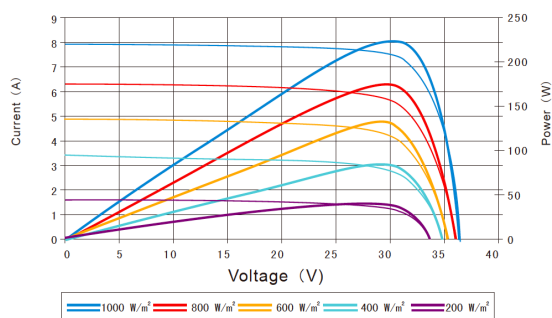
Electrical Parameters

TYPE	BROPV P240	BROPV P245	BROPV P250	BROPV P255	BROPV P260
Rated maximum Power at STC (W)	240	245	250	255	260
Open Circuit Voltage (Voc/V)	37.5	37.5	37.6	37.7	37.7
Maximum Power Voltage (Vmp/V)	29.3	29.6	29.8	30.0	30.3
Short Circuit Current (Isc/A)	8.75	8.83	8.92	9.01	9.09
Maximum Power Current (Imp/A)	8.18	8.28	8.39	8.49	8.59
Module Efficiency (%)	14.7	15.0	15.3	15.6	15.9
Power Tolerance (W)	- 0 ~ +5				
Temperature Coefficient of Isc	+ 0.05%/°C				
Temperature coefficient of Voc	- 0.32%/°C				
Temperature coefficient of Pmax	- 0.42%/°C				
STC	Irradiance 1000W/m ² , Module Temperature 25°C, Air Mass 1.5				

NOCT

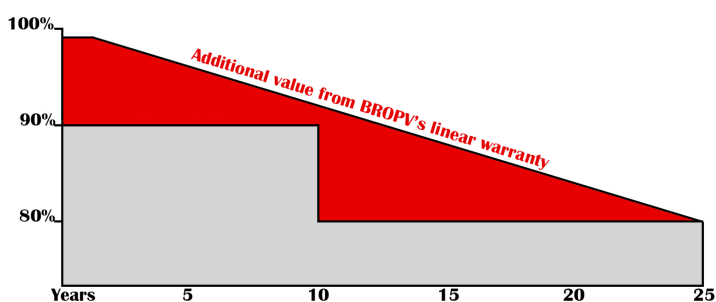
TYPE	BROPV P240	BROPV P245	BROPV P250	BROPV P255	BROPV P260
Max Power (Pmax) [W]	240	245	250	255	260
Open Circuit Voltage (Voc/V)	175.1	178.7	182.4	186.0	189.7
Maximum Power Voltage (Vmp/V)	26.8	27.0	27.2	27.4	27.6
Short Circuit Current (Isc/A)	7.07	7.14	7.21	7.28	7.35
Maximum Power Current (Imp/A)	6.54	6.62	6.71	6.79	6.87
Condition	Irradiance 800W/m ² , Module Temperature 20°C, Air Mass 1.5				

I - V Curve



Linear Performance Warranty

10 Year Product Warranty | 25 Year Linear Power Warranty



BROPV-P260 SERIES

GENERAL CHARACTERISTICS

Mechanical Parameters

Cell (mm)	Poly 156 x 156
Weight (kg)	18.2 (approx.)
Dimensions (LxWxH) (mm)	1640x992x40
No. of Cells and Connections	60 (6 x 10)
Front cover (material / thickness)	Low-iron tempered glass / 3.2mm
Encapsulant (material)	Ethylene vinyl acetate (EVA)
Frame (material / edge sealing)	Anodized aluminum alloy / Silicone
Junction Box	IP67, 3 Diodes
Connector	MC4 Compatible

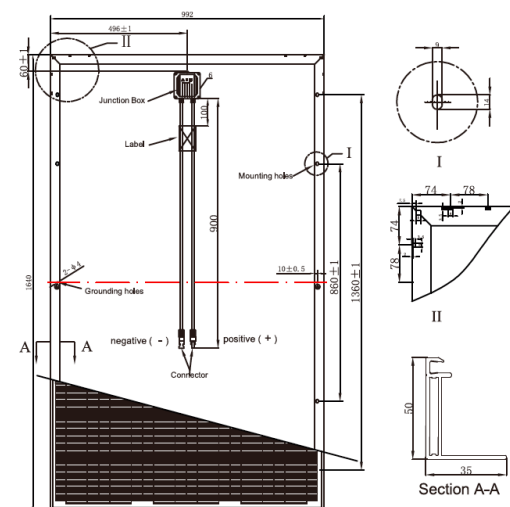
Packing Specifications

Number of modules per pallet	27
Number of pallets per 40' container	28
Packing box dimensions (L x W x H) (mm)	1665x1105x1117
Box weight (kg)	525

Operating Conditions

Max. system voltage	1000V _{dc}
Max. series fuse rating	15A
Limiting reverse current	15A
Operating temperature range	-40°C to 85°C
Max. static load, front (e.g. snow)	5400Pa
Max. static load, back (e.g. wind)	2400Pa
Max. hailstone impact (diameter / velocity)	25mm / 23m/s

Engineering Drawing



*Please refer to Product warranty for detail. **PID free modules are only available upon request. ***Due to continuous innovation, research and product improvement, the specifications in this product information sheet are subject to change without prior notice. The specifications may deviate slightly and are not guaranteed. ****The data do not refer to a single module and they are not part of the offer, they only serve for comparison to different module types.