



MSM190-54P MSM195-54P MSM200-54P
 MSM205-54P MSM210-54P MSM215-54P
 MSM220-54P MSM255-54P

Electrical Specifications

*STC : Irradiance 1000W/m², AM1.5 spectrum, module temperature 25°C

Model type	190-54P	195-54P	200-54P	205-54P	210-54P	215-54P	220-54P	225-54P
Peak power (Pmax)	190W	195W	200W	205W	210W	215W	220W	225W
Cell Efficiency	15.0%	15.3%	15.7%	16.2%	16.5%	16.9%	17.3%	17.8%
Maximum power voltage (Vmp)	26.0V	26.0V	26.5V	26.5V	27.0V	27.0V	27.5V	27.5V
Maximum power current (Imp)	7.31A	7.50A	7.55A	7.74A	7.78A	7.98A	8.0A	8.18A
Open circuit voltage (Voc)	33.02V	33.02V	36.66V	33.66V	34.3V	34.3V	34.9V	34.9V
Short circuit current (Isc)	7.81A	7.95A	8.08A	8.28A	8.32A	8.52A	8.64A	8.83A
Power Tolerance	±3%							
Maximum system voltage	1000VDC							
Series fuse rating (A)	15							
Number of bypass diode	6							

Temperature Coefficients

Current Temperature Coefficient: 0.03%/°C
 Voltage Temperature Coefficient β(Voc): -0.32%/°C
 Power Temperature Coefficient γ(Pmax): -0.42%/°C

Mechanical Characteristics

Dimensions : 1482 x 992 x 50mm
 (58.35x39.06x1.97 inch)
 Weight: 18 kg (39.68lbs)
 Solar Cells: 54cells in series(6x 9)
 Construction: High-transmission low-iron tempered glass , EVA, TPT
 Frame: Anodized aluminum is mainly for improving corrosion resistance. Color: silver

Output(Optional)

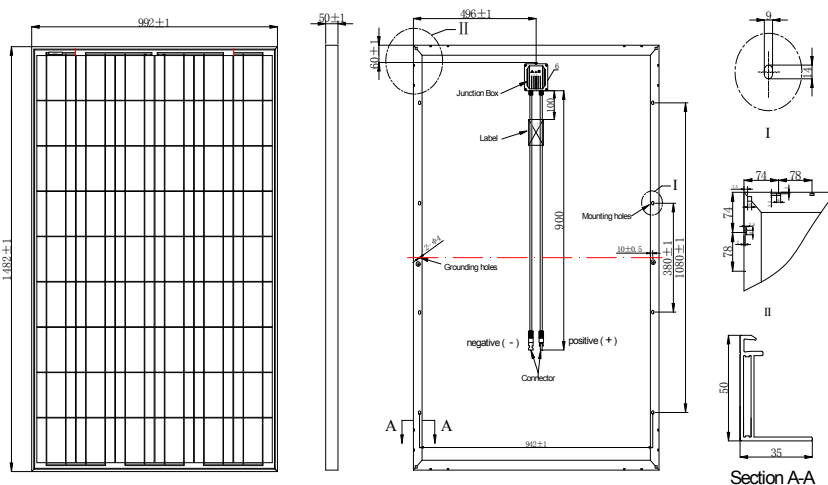
Cable LAPP(4 mm²)
 Lengths 900mm(-) and 900(+)
 Connector MC Plug Type IV

Module Warranty:

25-year limited warranty of 80% power output;
 10-year limited warranty of 90% power output;
 5-year limited warranty of materials and workmanship.

Note: This publication summarizes product warranty and Specifications which are subject to change without notice

Module Diagram



Electrical Performance

