

O-Marine Series



With Power, Life Advances

O-Marine Series | Design for Marine & Outdoor Purposes

Model Name		MWP 010	MBM 012	MWP 020	MBM 025	MWP 045	MBM 050	MWP 095	MBM 100
ELECTRICAL CHARACTERISTICS	P _{max} (W)	10	12	20	25	45	50	95	100
	V _{mpp} (V)	18.65	19.37	18.54	19.37	18.54	19.37	18.65	19.37
	I _{mpp} (A)	0.66	0.70	1.32	1.39	2.65	2.78	5.29	5.57
	V _{oc} (V)	22.32	22.86	22.25	22.86	22.25	22.86	22.32	22.86
	I _{sc} (A)	0.70	0.74	1.41	1.48	2.82	2.95	5.63	5.91
Power tolerance (%)		-5%~+10%							
MECHANICAL CHARACTERISTICS	Module dimensions (mm)	240x438.5x10		344x565x10		565x668x10		656x1033x10	
	Cell dimensions (mm)	52x39		156x26		156x26		156x52	
	Cell type	Poly	Mono	Poly	Mono	Poly	Mono	Poly	Mono
	No. of cells and connections	36(4X9)		36(2X18)		72(4X18)		72(4X18)	
	Backsheet color	Sliver	Black	Sliver	Black	Sliver	Black	Sliver	Black
	Weight (Kg)	0.8		1.4		2.5		4.9	
WARRANTY & TEMP. CHARACTERISTICS	NOCT	45 +/- 2°C							
	Operating temperature range	-40°C ~ +80°C							
	Ambient temperature range	-40°C ~ +45°C							
	Materials limited warranty	2 years							
	Performance warranty	90% of power output for 10 years							

*At STC (1000W/m²,25°C,1.5AM)

Specialized Modules – O-Marine Series for Marine and Outdoor Purposes

- Multiple models are available or customized service is provided for your special requirements.
- O-Marine features semi-flexible, lightweight, and weatherproof.



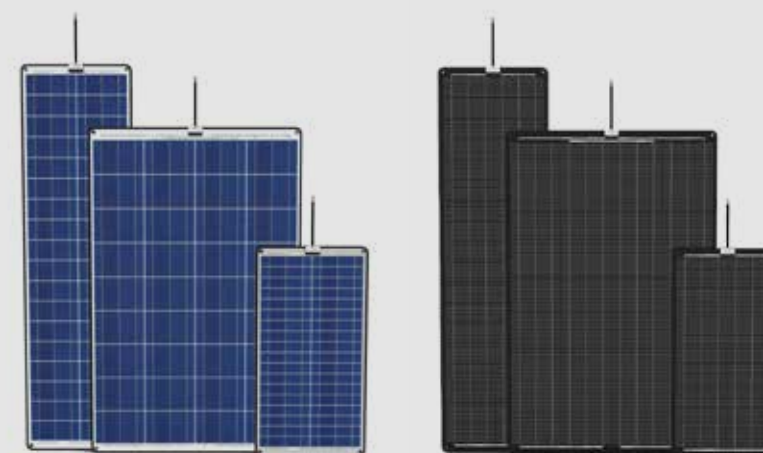
Stepability



Semi-flexibility



Weatherproof



OPES Solutions Limited

M: +86-18516158421
 T: +852-81933413
 E: info@opes-solutions.com
 www.opes-solutions.com

