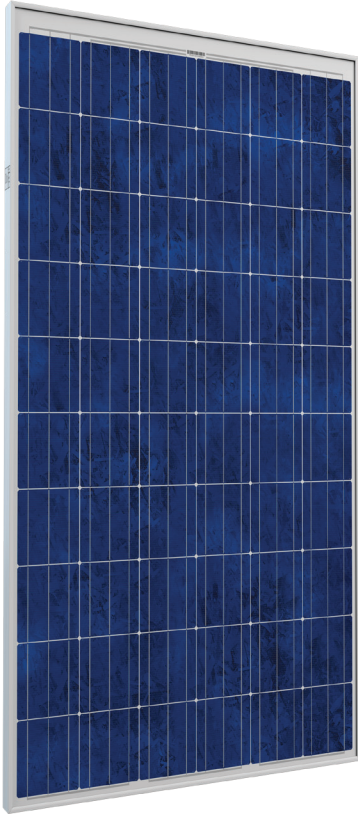


JHX - xxxP60

Peak Power **230|235|240|245|250** wp



Guaranteed 0-5wp plus output tolerance ensures high return on investment



High module efficiency (up to 15.4%) through superior manufacturing technology



Module can bear snow loads up to 5400Pa and wind loads up to 2400Pa



Certified by the most reputable labs according to IEC:61215;IEC:61730-1/2 standards



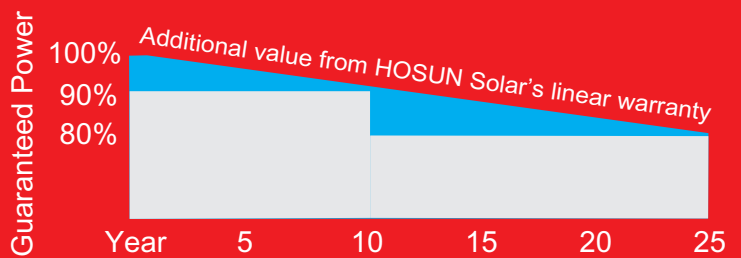
Manufactured and certified according to International Quality and Environment Management System (ISO9001,ISO14001,ISO18000)



linear performance warranty

10 years product warranty

25 years power warranty



Superior Frame Design
Specially designed drainage holes and rigid construction prevent frames from deforming. Screwless frame design for a long term durability.



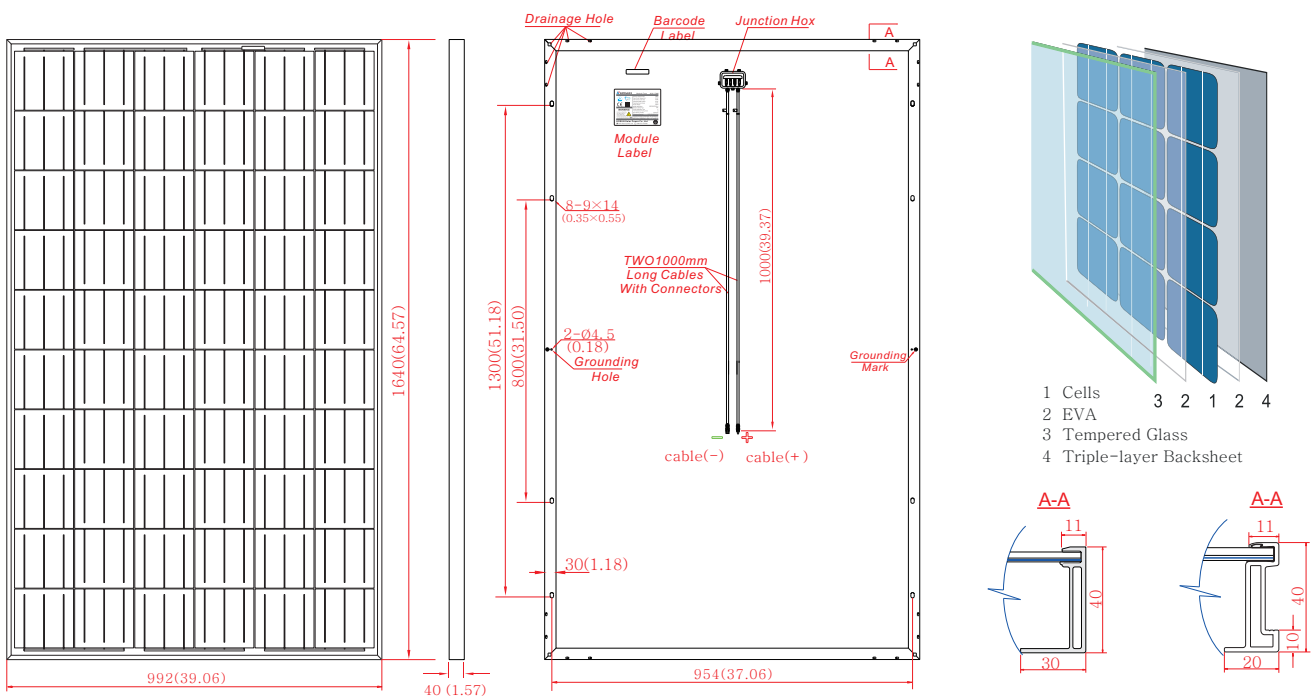
The new aluminum alloy (without mounting hole) is quicker in installment and better in protecting module, thus saving the mounting expense. It can help to avoid cracks on solar cells caused during the installment.

ELECTRICAL CHARACTERISTICS

Module Type	JHX-230P60	JHX-235P60	JHX-240P60	JHX-245P60	JHX-250P60
Maximum Power at STC (Pmax)	230W	235W	240W	245W	250W
Maximum Power Voltage (Vmp)	29.30V	29.53V	29.67V	29.92V	30.16V
Maximum Power Current (Imp)	7.85A	7.96A	8.09A	8.19A	8.29A
Open Circuit Voltage (Voc)	37.17V	37.34V	37.58V	37.64V	37.71V
Short Circuit Current (Isc)	8.31A	8.40A	8.52A	8.63A	8.71A
Maximum System Voltage	DC 1000V(TÜV) / DC 600V(UL)				
Operating Temperature	-40°C to +85°C				
Maximum Series Fuse Rating	15A				
Application Class	Class A				

STC: Irradiation 1000W/m², Module Temperature 25°C, AM=1.5 ; Power Measurement Tolerance:±3%

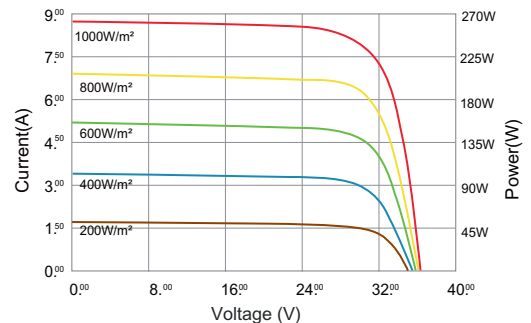
PHYSICAL CHARACTERISTICS



MECHANICAL DATA

Dimension	1640×992×40mm(64.57×39.06×1.57)
Cell Type	Poly Crystalline Silicon, 156mm × 156mm
Number of Cells	60 cells in series(10×6)
Weight	20.0kg±0.5kg
Front Glass	High Transparency Solar Glass 3.2mm
Frame	Anodized Aluminium Alloy
Junction Box	TÜV: IP65 rated / IP67 rated, 3/6 Diodes
Cable	Photovoltaic Technology 4.0mm ² , 1000mm,
Connector	MC-4 / DJ2011-4(SHIHE) Compatible

Current-Voltage & Power-Voltage Curve
JHX-250P60 (cell temperature:25°C)



TEMPERATURE RATINGS

Nominal Operating Cell Temperature(NOCT):	47°C(±2°C)
Temperature Coefficient of Pmax	-0.48%/°C
Temperature Coefficient of Voc	-0.34%/°C
Temperature Coefficient of Isc	0.05%/°C

NOCT:Irradiation 800W/m², ambient temperature 20°C, wind speed 1m/s

PACKING CONFIGURATION

Container	20GP	40GP	40HC
Pieces per pallet	48/52	48/52	50/54
Pallets per container	6	14	14
Pieces per container	288/312	672/728	700/756