



ABOUT KORLONE NEW ENERGY

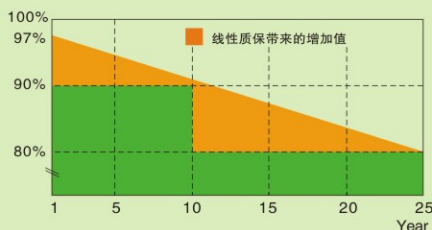
Taizhou Korlone specializes in vertically integrated global solar PV production and services, is engaged in one of the larger Chinese crystalline silicon solar manufacturers. Design specializes in silicon rods, ingots, wafers, solar cells, components of the high-end research and development and production of solar application product development, sales and investment in solar power system design, installation and operation.

Solar products scopes: Solar panels, Solar cells, Distributed solar PV power generation system, Solar electric car, Solar home system, Small solar system, Solar lighting series. such as solar street light, solar integrated lamp, Solar Water pump irrigation system, Solar greenhouse, BIPV modules.

Market vision: To provide affordable green energy for all.

一流的质保

- ◆ 10年产品材料与工艺质保
- ◆ 25年线性功率输出质保



JNMS240M60-30V JNMS260M60-30V

单晶太阳能光伏组件
Monocrystal Solar Photovoltaic Modules

产品特性 PRODUCT FEATURE



高效单晶组件适用于住宅、公共应用领域。
可广泛应用于屋顶和地面电站项目。
High Efficiency monocrystal modules suitable for residential, Public application field.
Can be widely used in roof and the ground power station project.



采用最先进的组件制造技术。
高输出功率。最高转换率可达16.39%。
Using the most advanced modules manufacturing technology.
High output power., The highest conversion can reach 16.39%.



采用减反射玻璃不仅增加了光的吸收。
同时使组件在雨水环境下具有自清洁功能。
有效的减少了灰尘引起的功率损失。
Using surface treatment not only increased the absorption of light,
At the same time make the modules have automatic cleaning function.
Effectively reduced the power loss caused by dust.



优异的弱光发电性能(早晨、傍晚、阴雨天)
Excellent low light power generation performance.
(morning, dust, rainy days)



组件抗压能力强。
能承受2400帕的风压和5400帕的雪压。
The modules have strong ability to resist the pressure.
Can being able to work under the wind pressure 2400mpa and the snow pressure 5400mpa.



良好的抗盐雾、抗氢气腐蚀性能。
全系列组件通过TUV北德测试。
Good performance for resistance to salt fog,
The hydrogen corrosion resistance.
Whole series modules pass the TUV test.

可靠的质量 RELIABLE QUALITY

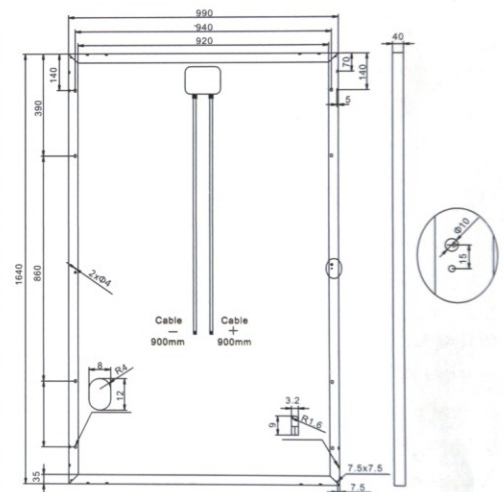
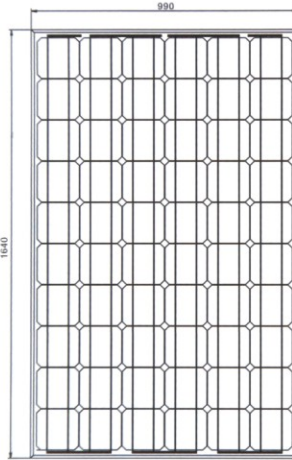
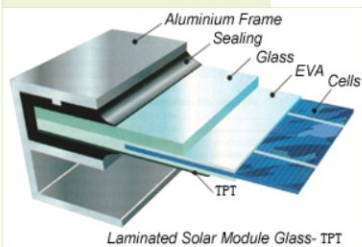
- 0—+5w正公差输出保证
Guaranteed output 0—+5w plus tolerance
- 产品100%两次EL全检。有效排除产品缺陷
100% Two EL detection. Effectively exclude the defect of product
- 优化组件电流分档。提高系统端发电量
To optimize the current step of the modules..
- 优异的抗电势诱导衰减性能(PID Resistant)

全面的体系及产品认证 SYSTEM&CERTIFICATION

- IEC 61215, IEC 61730, ULI703. CEC Listed, MCS and CE
- ISO 9001 2008 ISO质量管理体系
- ISO 14001 2004 ISO环境管理体系
- BS OHSAS 18001: 2007: 职业健康安全管理体系



工程图纸 ENGINEERING DRAWINGS



Electrical Date

Maximum Power(W)	240	245	250	255	260
Optimum Power Voltage(Vmp)	31.32	31.49	31.65	31.82	31.99
Optimum Operating Current(Imp)	7.66	7.78	7.90	8.01	8.13
Open Circuit Voltage(Voc)	37.20	37.28	37.37	37.45	37.53
Short Circuit Current(Isc)	8.2	8.32	8.45	8.57	8.70
Cell Efficiency(%)	17.24	17.60	17.96	18.32	18.68
Module Efficiency(%)	14.78	15.09	15.40	15.71	16.01
Tolerance Wattage	0~+3%				
NOCT	47°C+/-2°C				
Temperature Coefficients of Isc(%)°C	+0.04				
Temperature Coefficients of Voc(%)°C	-0.35				
Temperature Coefficients of Pm(%)°C	-0.45				
Temperature Coefficients of Im(%)°C	+0.04				
Temperature Coefficients of Vm(%)°C	-0.35				

Components&Mechanical Date

Solar Cell	156 × 156 Mono
Number of Cell(pcs)	6 × 10
Size of Module(mm)	1640 × 990 × 40
Front Glass Thickness(mm)	3.2
Surface Maximum Load Capacity	2400-5400Pa
Allowable Hail Load	23m/s, 7.53g
Weight Per Piece(KG)	18.6
Junction Box Type	Pass the TUV Certificate
Bypass Diode Rating(A)	12
Cable & Connector Type	Pass the TUV Certificate
Frame(Material Corners.etc.)	40#
Backing(Brand Type)	TPT
Temperature Range	-40°Cto+85°C
FF(%)	70-76%
Standard Test Conditions	AM1.5 1000W/m ² 25+/-2°C

Warranty&Certifications

Warranty	25 years limited power warranty 10 years limited product warranty
Certifications	IEC 61215, IEC 61730

Packing

Packing	Wooden Box
1 × 20'	14Pallets/332pcs
1 × 40' HQ	28Pallets/840pcs

Applications

On-grid residential roof-tops
On-grid commercial/industrial roof-tops
Solar power stations
Other on-grid applications

