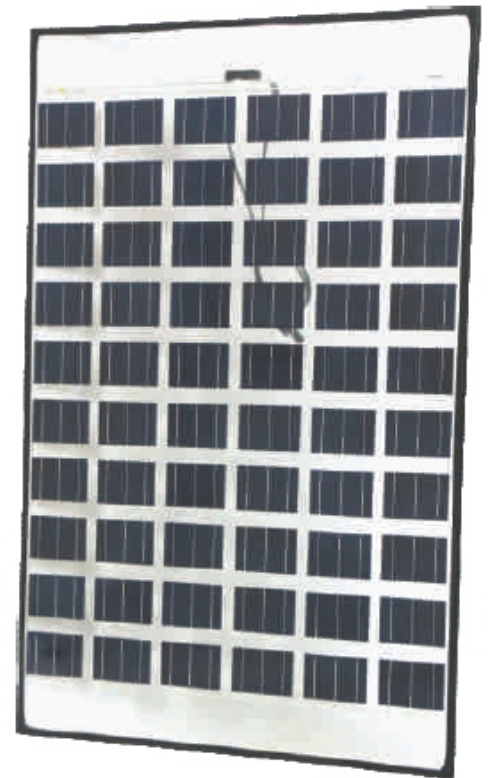




Topsun's Crystalline Photovoltaic Modules are manufactured under Integrated Management System (ISO 9K: ISO 14K: BS 18K) for quality and safety environment. Offers high module efficiencies with consistent performance, quality workmanship and *antimony free glass* material. High power modules precisely manufactured to achieve better module conversion efficiency in the industry. Environmental friendly product confirming to RoHS standards.

## Features:

- Mono/Multi Crystalline
- 3BB/4BB Modules
- Replacing conventional building roofs by giving power as well as light from roofs.
- Zero negative tolerance
- Encouraging Power Generation & Natural Light for Buildings
- Customized cell spacing for transparency
- Linear degradation as per Industry standard
- Best suited for Building Applications for roofs, sky lights & facades



## Certifications:

- RoHS compliance



## Typical Electrical Characteristics at STC

IV parameters are tested at STC (Irradiance of 1000W/m<sup>2</sup>, AM 1.5G and Temperature 25°C)

Model/Type	(Pmax)	(Vmp)	(Imp)	(Voc)	(Isc)	Eff (%)
260 W	260.00	31.00	8.40	36.00	9.00	11.50
270 W	270.00	31.50	8.60	37.00	9.20	11.95
280 W	280.00	32.00	8.75	37.50	9.25	12.50

Compliance of Simulator readings with an accuracy of class AAA (±2%)

### Typical Electrical Characteristics at NOCT

IV parameters are tested at NOCT (Irradiance of 800W/m<sup>2</sup>, Temp at NOCT)

Model/Type	(Pmax)	(Vmp)	(Imp)	(Voc)	(Isc)
260 W	190.00	28.50	6.66	33.45	7.27
270 W	197.00	29.25	6.75	34.35	7.45
280 W	205.00	29.30	7.00	34.75	7.50

### System Design

Series Fuse Rating (Recommended): 15A

Maximum System Voltage: 1000 VDC

Module Dimension: 1950 x 1160 x 5.5 mm

Module Weight: 29 kg (64.0 Lbs)

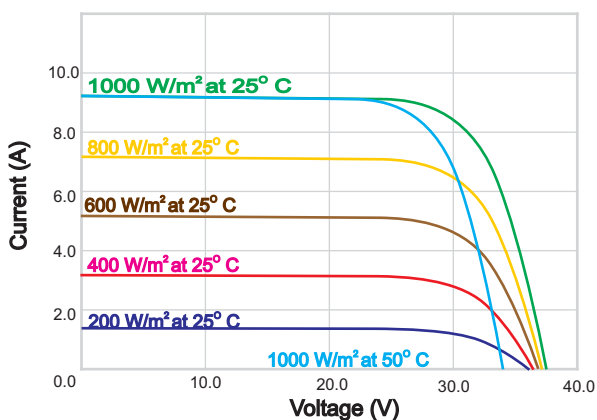
### Temperature Co-efficients

NOCT	45±2	°C
Pmp	-0.43	%/°C
Isc	0.05	%/°C
Imp	0.03	%/°C
Voc	-0.36	%/°C
Vmp	-0.45	%/°C
Operating Temperature	-40 to +85	°C

### Packing Configuration

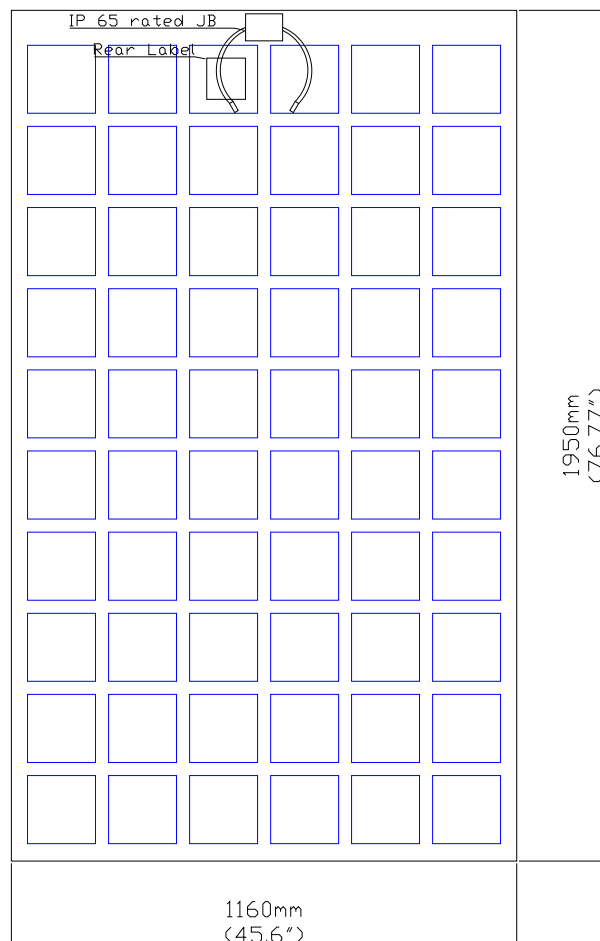
Each Pallet	10 Modules
20 Ft Container	180 Modules
40 Ft /40Ft HC Container	360 Modules

### Typical IV Curves

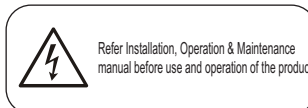


Current/voltage dependence on irradiance and module temperature.  
These I-V curves indicate the effect of temperature and light intensity on module Performance.

### Dimensions:



Tolerance: ±2mm



NOTE: The data presented may change due to further improvements in the product.

## Topsun Energy Limited

B-101, GIDC, Electronics Zone, Sector-25, Gandhinagar- 382 028, Gujarat, India.  
Phone/Fax: +91 79 23288804, 23288805.

Email: [marketing@topsunenergy.com](mailto:marketing@topsunenergy.com), Website: [www.topsunenergy.com](http://www.topsunenergy.com).

## Our Valued Partner