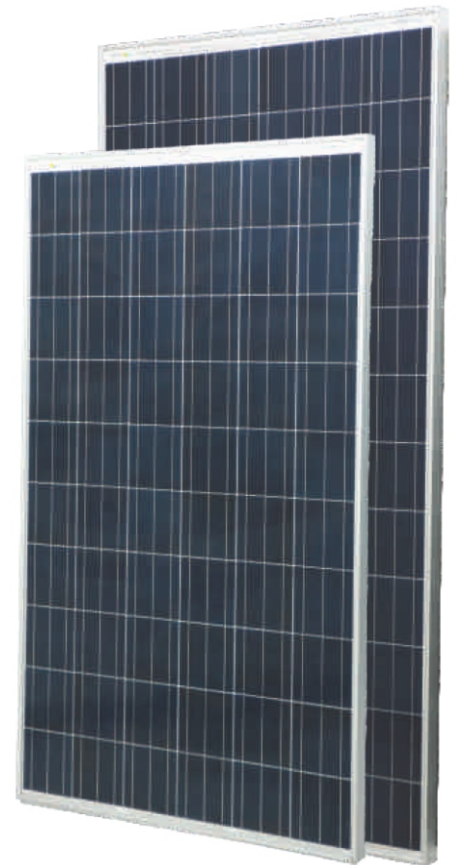




Topsun's Crystalline Photovoltaic Modules are manufactured under Integrated Management System (ISO 9K: ISO 14K: BS 18K) for quality and safety environment. Offers high module efficiencies with consistent performance, quality workmanship and *AR coated antimony free glass* material. High power modules precisely manufactured to achieve better module conversion efficiency in the industry. Environmental friendly product confirming to RoHS standards.

## Features:

- Mono/Multi Crystalline
- New Cell Technology (Passivation Emitter Rear Cell)
- 3BB/4BB Modules
- Reflects less light and has higher internal reflection than standard cells
- AR coated glass for better positive tolerance
- Zero Negative Tolerances
- Higher Module Efficiencies
- Best suited for Grid Tied applications



## Certifications:

- RoHS compliance



## Typical Electrical Characteristics at STC

IV parameters are tested at STC (Irradiance of 1000W/m<sup>2</sup>, AM 1.5G and Temperature 25°C)

Model/Type	(Pmax)	(Vmp)	(Imp)	(Voc)	(Isc)	Eff (%)
260 W	260.00	31.00	8.40	36.00	9.00	16.10
270 W	270.00	31.50	8.60	37.00	9.20	16.70
280 W	280.00	32.00	8.75	37.50	9.25	17.30

Compliance of Simulator readings with an accuracy of class AAA (±2%)

### Typical Electrical Characteristics at NOCT

IV parameters are tested at NOCT (Irradiance of 800W/m<sup>2</sup>, Temp at NOCT)

Model/Type	(Pmax)	(Vmp)	(Imp)	(Voc)	(Isc)
260 W	190.00	28.50	6.66	33.45	7.27
270 W	197.00	29.25	6.75	34.35	7.45
280 W	205.00	29.30	7.00	34.75	7.50

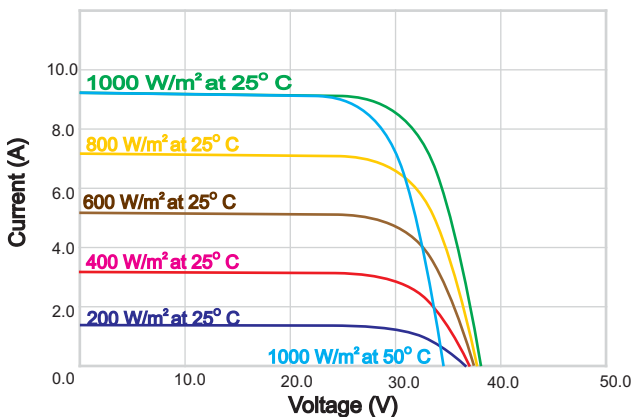
### Temperature Co-efficients

NOCT	45±2	°C
Pmp	-0.43	%/°C
Isc	0.05	%/°C
Imp	0.03	%/°C
Voc	-0.36	%/°C
Vmp	-0.45	%/°C
Operating Temperature	-40 to +85	°C

### Packing Configuration

Each Pallet	26 Modules
20 Ft Container	312 Modules
40 Ft /40Ft HC Container	728 Modules

### Typical IV Curves



Current/voltage dependence on irradiance and module temperature. These I-V curves indicate the effect of temperature and light intensity on module Performance.

### System Design

Series Fuse Rating (Recommended): 15A

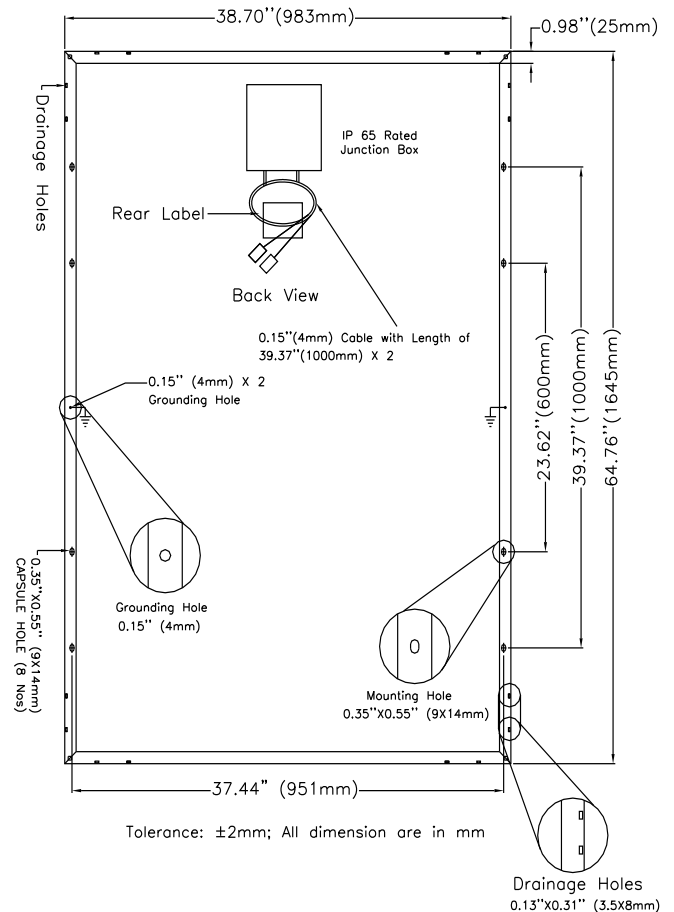
Maximum System Voltage: 1000 VDC

Static Load: 5400 Pa (113 Psf)

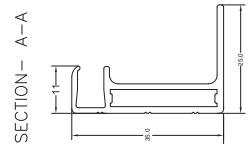
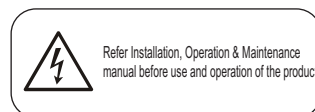
Module Dimension: 1645 x 983 x 35 mm

Module Weight: 18.9 kg (41.7 Lbs)

### Dimensions:



Tolerance: ±2mm; All dimension are in mm



NOTE: The data presented may change due to further improvements in the product.

## Topsun Energy Limited

B-101, GIDC, Electronics Zone, Sector-25, Gandhinagar- 382 028, Gujarat, India.  
Phone/Fax: +91 79 23288804, 23288805.

Email: [marketing@topsunenergy.com](mailto:marketing@topsunenergy.com), Website: [www.topsunenergy.com](http://www.topsunenergy.com).

## Our Valued Partner