



## ▶ Monocrystalline Silicon Solar Module (also for Black)

CNBM Solar Monocrystalline Series II (210W--225W)

CNBM Solar's photovoltaic module is designed for large electrical power requirements. It is the optimal choice for both on-grid and off-grid power systems. CNBM Solar offers high performance of power per square foot of solar array.

- ◇ Solar Cell: High efficiency crystalline solar cell. Even if under the weak light, the solar module can produce maximum power output.
- ◇ Tempered glass: Anti-reflecting coating and high transmission rate glass increase the power output and mechanical strength of solar module.
- ◇ EVA and TPT: Using high quality EVA and TPT to prevent destroying and water.
- ◇ Strong aluminum frames to strengthen the load hold and to stand against high wind.
- ◇ Junction box: Multi function junction box with water proof.
- ◇ Long lifetime:  $\geq 25$  years; Less power decrease.
- ◇ Good performance of preventing from atrocious weather such as wind and hails.
- ◇ Resisting moisture and etching effectively, not effected by geology.
- ◇ The certificate issued by international authority: UL, TUV, IEC, VDE, CE.



### Standard Test Conditions:

The opto-electrical specifications shown below are stabilized values being measured at Standard Test Conditions, Irradiance: 1000W/m<sup>2</sup>, Spectrum: AM1.5 at 25°C. The info below is subject to manufacturing tolerances. Where appropriate minutes of measurement are available and are used for the dimensioning of the installation.

### Advantages

- CNBM Solar performance guarantees for 25 years
- 12 years guarantee for workmanship
- Timeliness of delivery
- Quality Products certified (TÜV, UL, CE, VDE, ISO)

**CNBM Sola**

## CNBM Solar Monocrystalline Series II (210W—225W)

### Characteristics

Max Power Voltage Vmp(V)	27.6	27.9	28.2	28.6
Max Power Current Imp(A)	7.60	7.70	7.80	7.85
Open Circuit Voltage Voc (V)	33.0	33.3	33.7	33.9
Short Circuit Current Isc(A)	8.48	8.61	8.71	8.85
<b>Max Power Pm(W)</b>	<b>210</b>	<b>215</b>	<b>220</b>	<b>225</b>

### Temperature Coefficient of Cells

NOCT	45°C ± 2°C
Temperature Coefficients of Isc (%/°C)-	0.0492
Temperature Coefficients of Voc (%/°C)	-0.3374
Temperature Coefficients of Pmp (%/°C)-	-0.4677

### Mechanical Data

Dimension	1482 x 992 x 40 mm
Weight	17kg
No. of Cells and Connections	54 (6 x 9)
Tolerance	0~+5W
Cell	Monocrystalline Cell 156 x 156 mm
Packing	720 Pcs/40ft (H) Container

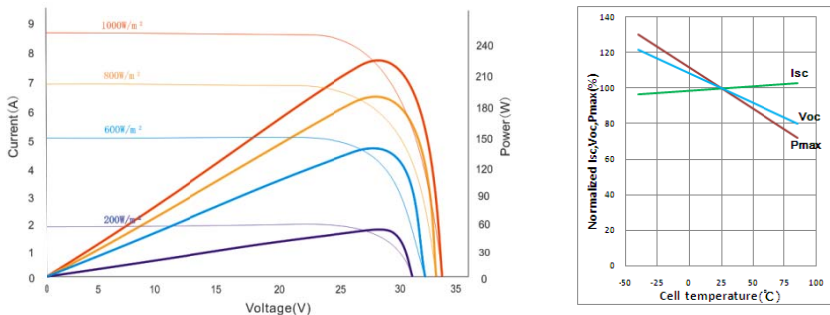
### Limits

Operating Temperature	-40 °C to +85°C
Storage Temperature	-40 °C to +85°C
Max System Voltage	1000VDC(IEC) / 600VDC(UL)

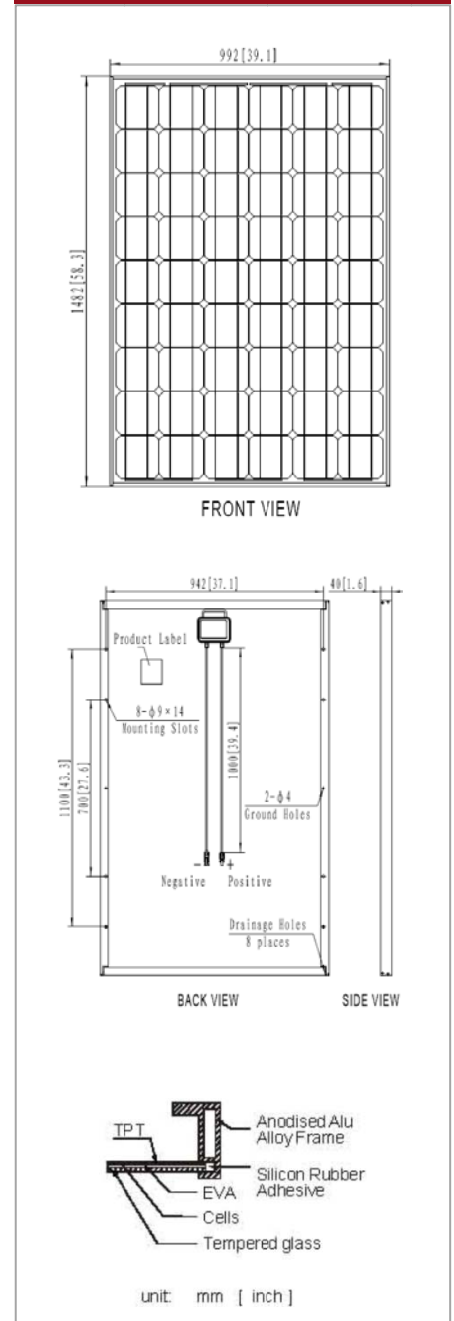
### Guarantees

Products Guarantee	12 yrs free from defects in materials and workmanship
Performance Guarantee	No less than 90% within 10yrs and no less than 80% within 25yrs
Certificates	TUV(IEC61215&IEC61730), VDE(IEC61215&IEC61730), UL, CE

### IV Curve



### Picture



\* The data does not refer to a single module and it is not part of the offer, It is only for comparison only to different module types.