

SHARP

260W | ND-RA260

Polycrystalline silicon photovoltaic modules

Sharp Solar.
The sun is the answer.



Sharp, a leader in the solar industry: Shipping more than 12 GW globally.
(Picture : 73 MW Solar Power Plant in Lopburi by Sharp EPC)



MULTI-PURPOSE 260 WATT MODULE FROM THE WORLD'S TRUSTED SOURCE FOR SOLAR.

Using breakthrough technology, made possible by over 50 years of proprietary research and development, Sharp's ND-RA260 solar modules incorporate an advanced surface texturing process to increase light absorption and improve efficiency. Common applications include commercial and residential grid-tied roof systems as well as ground mounted arrays. Designed to withstand rigorous operating conditions, this module offers high power output per square foot of solar array.

Product features

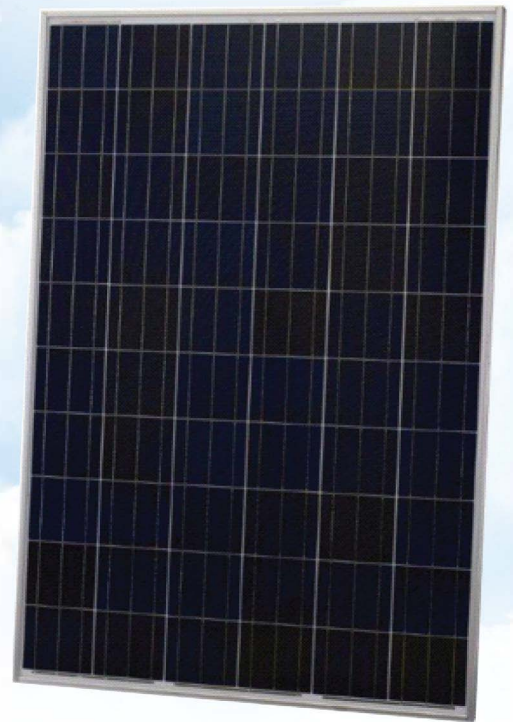
- ◆ **Positive Power Tolerance :**
Production controlled positive power tolerance from 0 to +5 %.
Only modules will be delivered that have the specified power or more for high energy yield.
- ◆ **High-performance photovoltaic modules:**
Made of polycrystalline(156.5 mm)² silicon solar cells with module efficiencies of up to 15.8 %. (ND-AA260)
- ◆ **PID Free:**
Sharp delivers convincing performance in independent test by Fraunhofer.
*PID : potential-induced degradation

MECHANICAL DATA

ND-RA260

260W | ND-RA260

Polycrystalline silicon photovoltaic modules



Cells	polycrystalline, 156 mm square
No. of cells and connections	60 in series(6strings)
Dimensions ((LxWxD)	1,652x994x46 mm
Weight	19.0 kg
Front glass	Low iron tempered glass, 3 mm
Frame	Anodized aluminium alloy, silver
Connection Box	IP-rating 65, 3 bypass diodes
Cable	4mm ² /1000±50 m
Connector	SMK CCT9901-2361F/2451F IP-rating 67

Electrical data (at STC*)

ND-RA260

Maximum power	P_{max}	260	W_p
Tolerance of Pmax		+5% / -0%	
Open-circuit voltage	V_{OC}	37.90	V
Short-circuit current	I_{SC}	8.94	A
Voltage at point of maximum power	V_{mpp}	30.98	V
Current at point of maximum power	I_{mpp}	8.40	A
Module efficiency	η_m	15.8	%

STC = Standard Test Conditions: irradiance 1,000 W/m², AM 1.5, cell temperature 25 °C

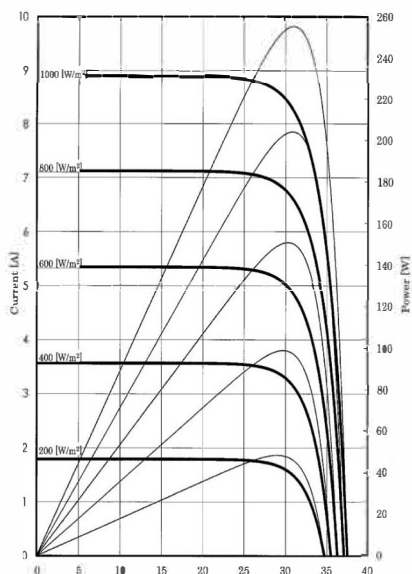
Limit values

Maximum system voltage	1,000 V DC
Over-current protection	15 A
Temperature range	-40 to +85°C
Maximum mechanical load	2,400 Pa

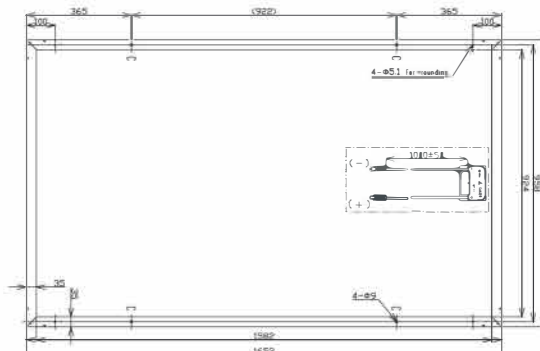
Temperature coefficient

P_{max}	-0.440 % / °C
V_{OC}	-0.329 % / °C
I_{SC}	+0.038 % / °C

Characteristic curves



Rear view



Standards and Certification

- * IEC 61215
- * IEC 61730-1/61730-2 (ed.1)
- * IEC 60904-1/60904-3



SHARP

SHARP SOLAR SOLUTION ASIA CO.,LTD.

952 RAMALAND BUILDING. 15th FLOOR, RAMA IV ROAD, SURIYAWONG, BANGKOK 10500
TEL : 02 638 3960