



Premium Series

## SUNTELLITE MODULE MONOCRYSTALLINE

ZDNY-220C54	220Wp
ZDNY-225C54	225Wp
ZDNY-230C54	230Wp
ZDNY-235C54	235Wp



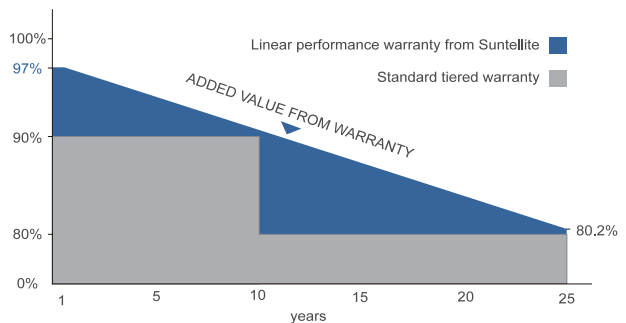
ZDNY-\*\*\*CB54 All black series as optional

### Features

- Cost-effective standard solar modules for skylight, roofing and facades applications
- 0 to +3% positive tolerance for mainstream products
- Withstand high wind loads and snow loads (5400Pa)
- Anti-reflective highly transparent, low iron tempered glass
- Whole black and frame features aesthetic appearance
- Transmission rate 3.18%

### Benefits

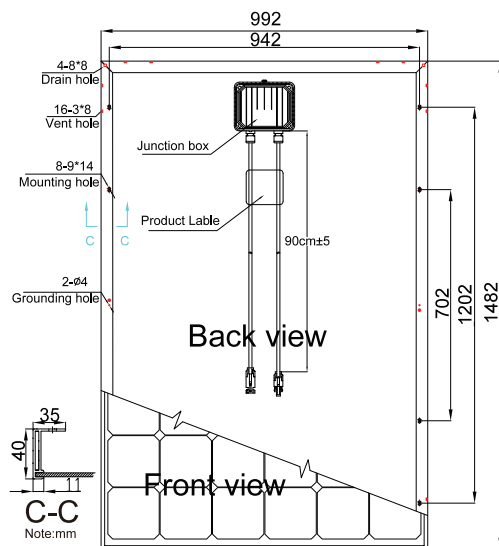
- 25-year linear performance warranty;
- 10-year warranty on materials and workmanship
- Product liability insurance
- 48 hour-response service
- Enhanced design for easy installation and long-term reliability



## Typical electrical characteristics

Characteristics	ZDNY-220C54	ZDNY-225C54	ZDNY-230C54	ZDNY-235C54
Max.Power(Pmax)	220Wp	225Wp	230Wp	235Wp
Optimum Operating Voltage(Vm)	27.83V	28.02V	28.36V	28.49V
Optimum Operating Current(I <sub>m</sub> )	7.91A	8.04A	8.12A	8.25A
Open-circuit Voltage(V <sub>oc</sub> )	33.36V	33.40V	33.45V	34.82V
Short-circuit Current(I <sub>sc</sub> )	8.42A	8.49A	8.56A	8.65A
Cell Efficiency	17.00%	17.40%	17.80%	18.20%
Module Efficiency	14.96%	15.30%	15.64%	15.98%

Note: the specifications are obtained under the Standard Test Condition(STC):1000 W/m<sup>2</sup> solar irradiance, AM1.5, Cell Temperature 25 °C .



<b>Solar Cell</b>	Mono-crystalline 156*156mm
<b>Output Tolerance(Pmax)</b>	0 ~ +3%
<b>Number of cells</b>	60 cells in series
<b>Module Dimension</b>	1482*992*40mm
<b>Weight</b>	17.5kg
<b>Max.System Voltage</b>	1000V(TUV)/600V(UL)
<b>Max.Series Fuse Rating</b>	15A
<b>Output Cable</b>	PV 4mm <sup>2</sup>
<b>Cable Length</b>	90cm±5
<b>Number of bypass diodes</b>	6
<b>Temperature cycling range</b>	(-40 ~ 85°C )
<b>NOCT</b>	47°C ±2°C
<b>Temperature coefficients of I<sub>sc</sub></b>	+(0.053±0.01)%/K
<b>Temperature coefficients of V<sub>oc</sub></b>	-(0.35±0.001)%/K
<b>Temperature coefficients of P<sub>max</sub></b>	-(0.40±0.05)%/K
<b>Load Capacity</b>	315 pcs/20'GP
	810 pcs/40'HQ

