



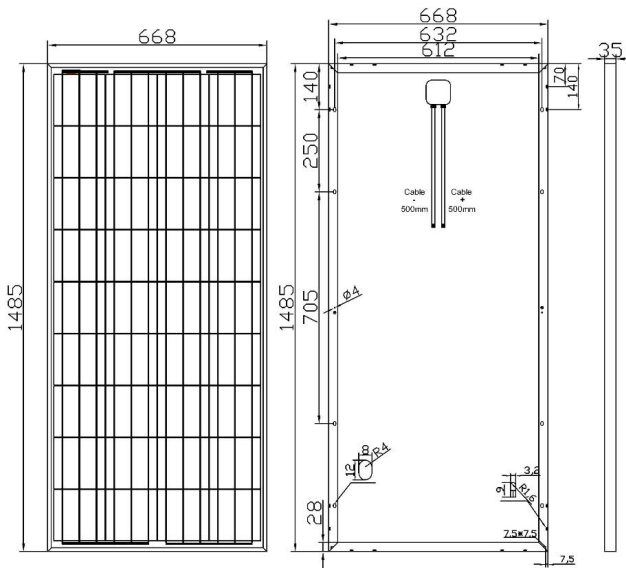
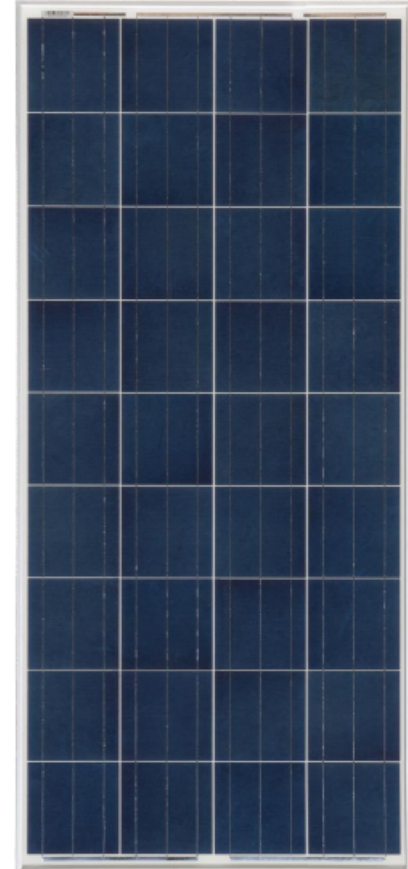
Easy Installation and Handling for Various Applications



Conforms to IEC 61215:2005, IEC 61730:2004 PV Standards



ISO9001, OHSAS18001, ISO14001 Certified



#### Mechanical Characteristics

Cell Type	Polycrystalline 156 x 156 mm
Glass	High Transmission, Low Iron, Tempered Glass, thickness 3.2mm
Frame	Anodized Aluminum Alloy
Junction Box	10A Bypass Diodes
Dimensions	1485 x 668 x 35 mm
Output Cable	500 mm
Weight	11.6 kg
Installation Hole Location	See Drawing Above

#### Electrical Characteristics STC

RS-SL135TU-18P

Maximum Power (Pmax)	135 W
Power Tolerance	0 ~ +3%
Module Efficiency	13.61%
Maximum Power Current (Imp)	7.45 A
Maximum Power Voltage (Vmp)	18.12 V
Short Circuit Current (Isc)	7.97 A
Open Circuit Voltage (Voc)	21.80 V



#### Characteristics

Temperature Coefficient of Voc	-0.38%/°C
Temperature Coefficient of Isc	0.04%/°C
Temperature Coefficient of Pmax	-0.47%/°C
Nominal Operating Cell Temperature (NOCT)	47°C±2°C

