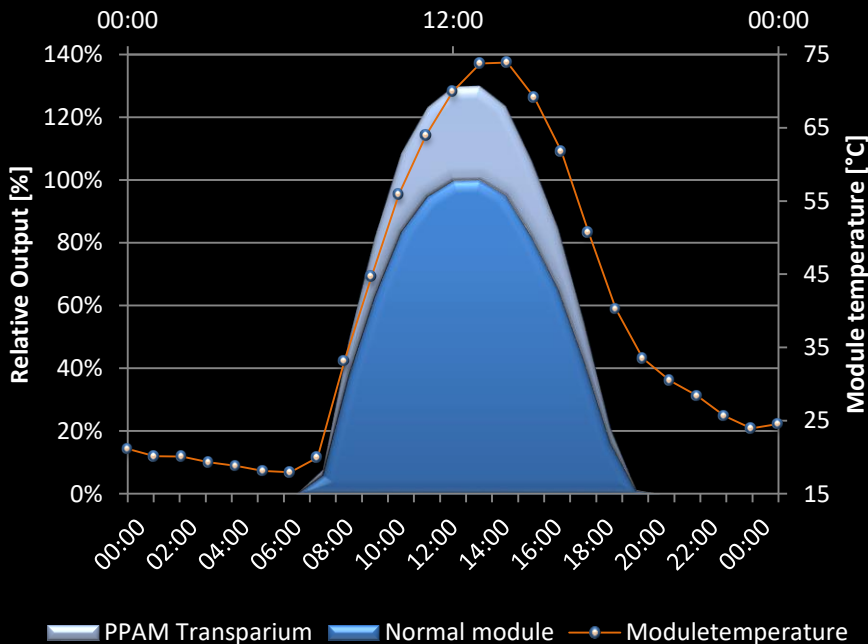


PPAM Transparium 370W

Solar power with high yields and low installation cost

The best of two worlds

Swedish engineering is a quality trademark you can trust. When combined with high quality solar cell technology from California, in the Transparium, high yields are reached with good thermal properties at low installation costs. Transparium is produced using only high quality raw materials from leading suppliers. Transparium is bifacial and is ideal for free-standing structures on facades, hand-rails, rooftops and large scale solar power systems.



Certified to UL 1703, IEC 61646, IEC 61730-01, IEC 61730-02, IEC 61701 standards, CEC & FSEC listed and CE mark

Quality & Warranty

The quality is assured by several quality control check points and tested prior to delivery. A final test is conducted in a solar tester, where the modules are tested under Standard Test Conditions (STC 1000W/m², AM 1.5, 25°C). Every modules test data is stored in our database with a unique serial number.

PPAM.se offer a product warranty of 15 years and a 25 year performance warranty for 97,5 % power output the first 5 years, and a maximum degradation of 0,5 % for the remaining 20 years.



We are certified in accordance with:

EN IEC 61215

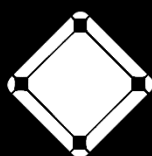
(design qualification and type approval)

EN IEC 61730

(safety qualification)

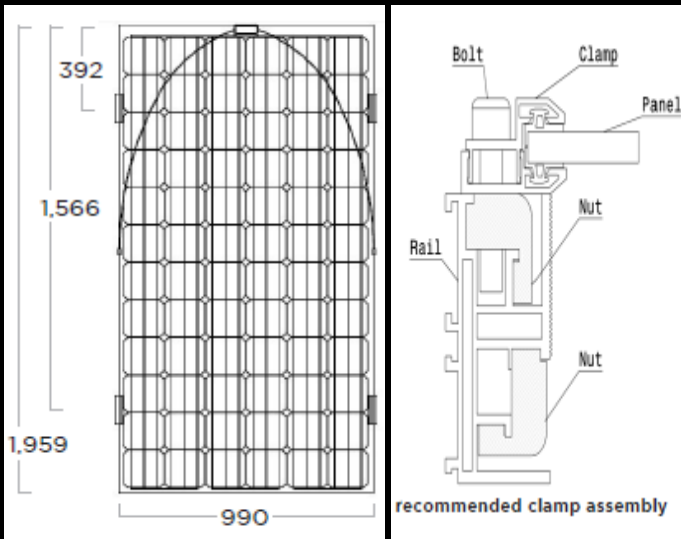
SS-EN ISO 9001:2008

(Quality Management System)



PPAM SOLKRAFT

PPAM.se Sweden AB | Finnängen, Husarvägen 57 | SE-590 72 LJUNGSBRO
+46 13 392040 | www.ppam.se | info@ppam.se

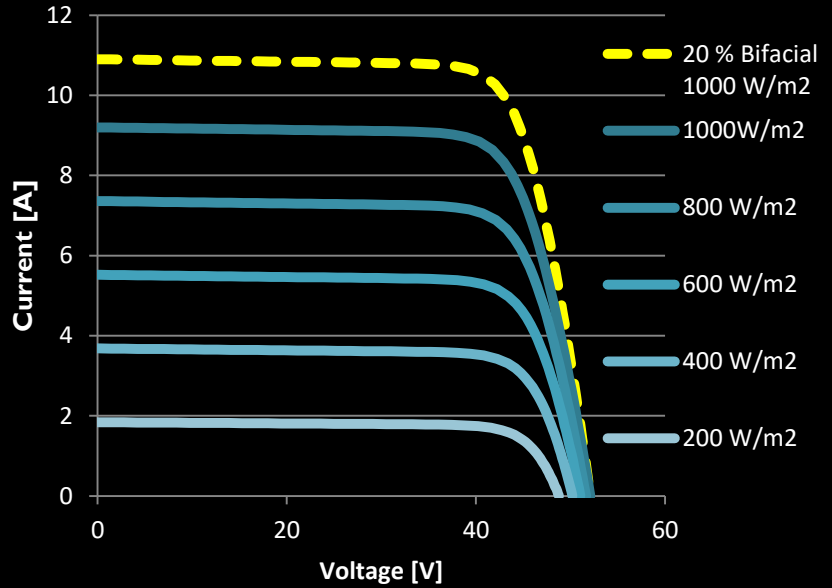


ppam.se Sweden AB reserves the right to make specification changes without prior notice. Please contact your nearest supplier/distributor or visit our website to obtain the latest specification sheet.

Electric properties:

Model	PPAM-Transparium	20 % Bifacial Effect
Max. Power [P_{max}]	370 W _p	444Wp
Open circuit Voltage [V_{oc}]	52,5 V	52,5 V
Max. Pow. Voltage [V_{mpp}]	42,5 V	42,5 V
Short Circ.Current [I_{sc}]	9.3 A	11.0 A
Max. Pow. Current [I_{mpp}]	8,7A	10,3 A
Power Tolerance	-3%/+5 %	-3/+5 %
Module Efficiency	19,1%	22,9 %

IV-curve @ 25°C module temp

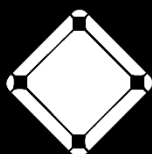


Physical properties

Cell Type	Bifacial Mono N-type
Cell dimensions	156 x 156 mm
Cells per module	72
Maximum System Voltage	1000 V
Module Weight	27.3 kg
Module Dimensions	1959 x 990 x 6 mm
Tested temp. conditions	-40°C to +85°C
Max load	550 kg/m ² front (snow) 83 m/s wind rating

Thermal properties

NOCT	46°C
Voltage Temp.Coefficient	-0.23%/K
Current Temp. Coefficient	+0.03 %/K
Power Temp.Coefficient	-0.28 %/K



PPAM SOLKRAFT