

# VPS PV MODULE

## 255~270watt

6inch 60cells  
Upgraded Warranty

6MB

DuraFlex™



### Electrical Characteristics

	SRP-255-6MB	SRP-260-6MB	SRP-265-6MB	SRP-270-6MB	Unit
Rated Power	255	260	265	270	W
Power Tolerance	(0,+4.99)	(0,+4.99)	(0,+4.99)	(0,+4.99)	W
Rated Maximum Power	259.99	264.99	269.99	274.99	W
Module Efficiency (ηm)	15.67%	15.98%	16.29%	16.60%	%
Open Circuit Voltage(Voc)	37.26	37.44	37.68	37.86	V
Short Circuit Current (Isc)	8.89	9.02	9.13	9.26	A
Maximum Power Voltage (Vmp)	31.26	31.44	31.68	31.86	V
Maximum Power Current (Imp)	8.16	8.27	8.36	8.47	A
Maximum System Voltage	1000 (TUV), 600 (UL)				V
Maximum Series Fuse Rating	15				A

STC: Irradiance 1000 W/m<sup>2</sup>, module temperature 25°C, AM=1.5;  
Power measurement tolerance: +/-3%

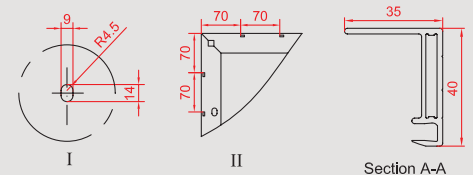
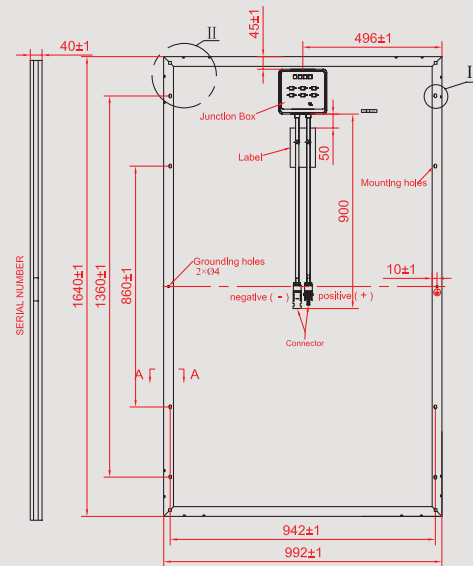
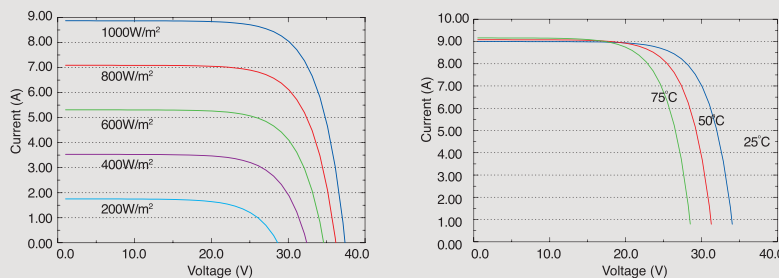
### Temperature Characteristics

Pmax Temperature Coefficient	-0.43 %/°C
Voc Temperature Coefficient	-0.35 %/°C
Isc Temperature Coefficient	+0.04 %/°C
Operating Temperature	-40~+85 °C
Nominal Operating Cell Temperature (NOCT)	45±2 °C

### Packing Configuration

Container	20'GP	40'GP	40'HC
Pieces per pallet	26	26	NA
Pallets per container	12	28	NA
Pieces per container	312	728	NA

### Current-Voltage & Power-Voltage Curve (SRP-250-6MB)



\* All Dimensions in mm

\* The above drawing is a graphical representation of the product.

### Mechanical Specifications

External Dimensions	1640 x 992 x 40 mm
Weight	19.0kg
Solar Cells	Monocrystalline 156 x 156mm (60pcs)
Front glass	3.2 mm tempered glass, low iron
Frame	Anodized/ Electrophoretic aluminum alloy
Junction Box	IP65/IP67
Output Cables	4.0 mm <sup>2</sup> , symmetrical lengths 900mm
Connector	MC4 Compatible
Maximum Snow Load	550kg/m <sup>2</sup>
Maximum Wind Load	200km/h
Hailstone Impact Test	80km/h for 25mm ice ball