

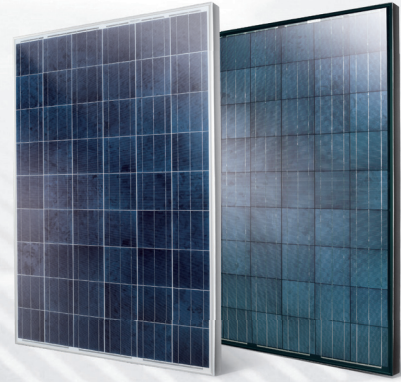
VPS PV MODULE

215~230watt

6inch 54cells
Upgraded Warranty

6PC

DuraFlex™



Electrical Characteristics

	SRP-215-6PC	SRP-220-6PC	SRP-225-6PC	SRP-230-6PC	Unit
Rated Power	215	220	225	230	W
Power Tolerance	(0,+4.99)	(0,+4.99)	(0,+4.99)	(0,+4.99)	W
Rated Maximum Power	219.99	224.99	229.99	234.99	W
Module Efficiency (ηm)	14.62%	14.96%	15.30%	15.64%	%
Open Circuit Voltage(Voc)	33.43	33.64	33.86	34.07	V
Short Circuit Current (Isc)	8.46	8.60	8.74	8.88	A
Maximum Power Voltage (Vmp)	27.92	28.13	28.46	28.67	V
Maximum Power Current (Imp)	7.70	7.82	7.91	8.02	A
Maximum System Voltage	1000 (TUV), 600 (UL)				V
Maximum Series Fuse Rating	15				A

STC: Irradiance 1000 W/m², module temperature 25°C, AM=1.5;
Power measurement tolerance: +/-3%

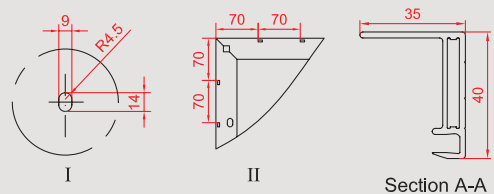
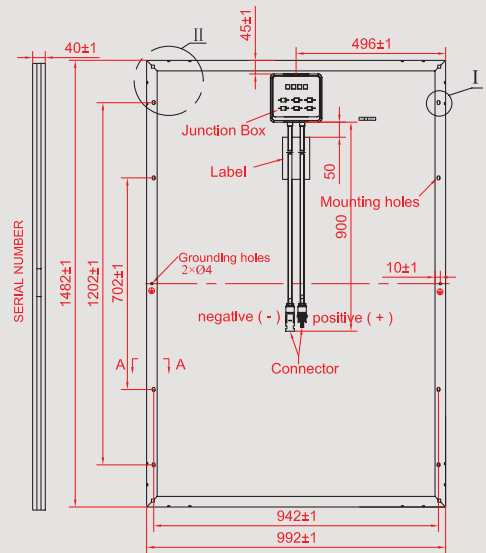
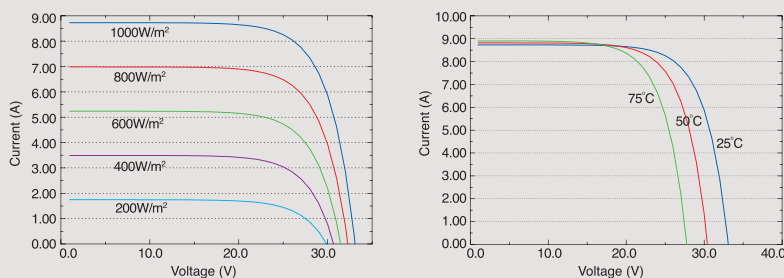
Temperature Characteristics

Pmax Temperature Coefficient	-0.42 %/°C
Voc Temperature Coefficient	-0.32 %/°C
Isc Temperature Coefficient	+0.04 %/°C
Operating Temperature	-40~+85 °C
Nominal Operating Cell Temperature (NOCT)	45±2 °C

Packing Configuration

Container	20'GP	40'GP	40'HC
Pieces per pallet	26	26	25
Pallets per container	14	28	2
Pieces per container	364	778	N.A

Current-Voltage & Power-Voltage Curve (SRP-220-6PC)



* All Dimensions in mm

* The above drawing is a graphical representation of the product.

Mechanical Specifications

External Dimensions	1482 x 992 x 40 mm
Weight	17.5kg
Solar Cells	Polycrystalline 156 x 156mm (54pcs)
Front glass	3.2 mm tempered glass, low iron
Frame	Anodized/ Electrophoretic aluminum alloy
Junction Box	IP65/IP67
Output Cables	4.0 mm ² , symmetrical lengths 900mm
Connector	MC4 Compatible
Maximum Snow Load	550kg/m ²
Maximum Wind Load	200km/h
Hailstone Impact Test	80km/h for 25mm ice ball