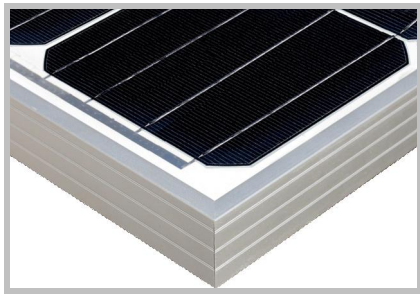
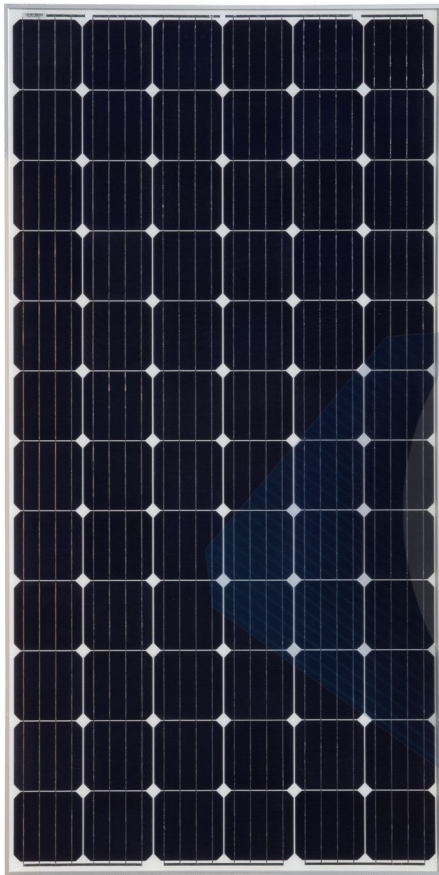




IGNITE THE POWER OF NATURE

Monocrystalline Module 305-330Watt

QXPV



Model : SLxxxTU-36MD(xxx=305-330) Specifications

Electrical Data

Maximum Power(W)	305	310	315	320	325	330
Optimum Power Voltage(Vmp)	38.15	38.32	38.48	38.65	38.70	38.77
Optimum Operating Current(Imp)	7.99	8.09	8.19	8.28	8.40	8.51
Open Circuit Voltage(Voc)	44.92	45.01	45.09	45.17	46.01	46.19
Short Circuit Current(Isc)	8.55	8.66	8.76	8.86	8.99	9.11
Cell Efficiency (%)	18.26	18.56	18.86	19.16	19.46	19.76
Module Efficiency (%)	15.72	15.98	16.23	16.49	16.75	17.01
Tolerance Wattage(%)	0 +3					
NOCT	45°C +/-2°C					

Temperature Coefficients

Temperature Coefficients of Isc(%)	+0.05
Temperature Coefficients of Voc(%)	-0.32
Temperature Coefficients of Pm(%)	-0.41

Components & Mechanical Data

Solar Cell	156*156 Mono
Number of Cell(pcs)	6*12
Size of Module(mm)	1956*992*40
Front Glass Thickness(mm)	3.2
Surface Maximum Load Capacity	2400-5400Pa
Allowable Hail Load	23m/s ,7.53g
Weight Per Piece(KG)	22.5
Junction Box Type	Pass the TUV Certificate
Bypass Diode Rating(A)	30
Cable & Connector Type	Pass the TUV Certificate
Frame(Material Corners,etc.)	40#
Temperature Range	-40°C to +85°C
FF (%)	70-78%
Standard Test Conditions	AM1.5 1000W/m ² 25°C

Benefits



Modules sorted by current, optimizing system power generation



High Efficiency



Stable Power



Low Carbon Emission



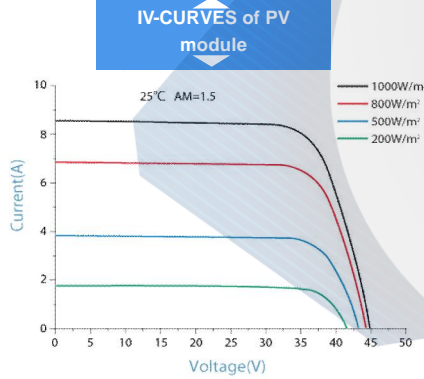
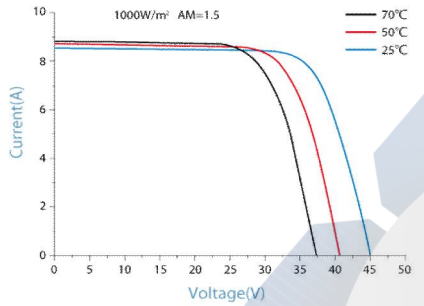
Excellent Weather Resistance



IGNITE THE POWER OF NATURE

Monocrystalline Module
305-330Watt

IV-Curves



IV-CURVES of PV module

Warranty & Certifications

Warranty	25 years limited power warranty
	12 years limited product warranty
Certifications	IEC 61215, IEC 61730

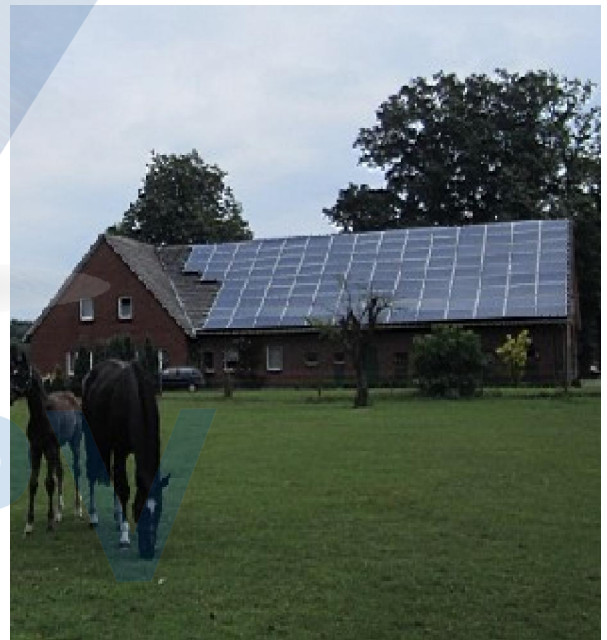
Packing

Packing	Carton Box
1*20'	12pallets/296pcs
1*40'HQ	24pallets/624pcs

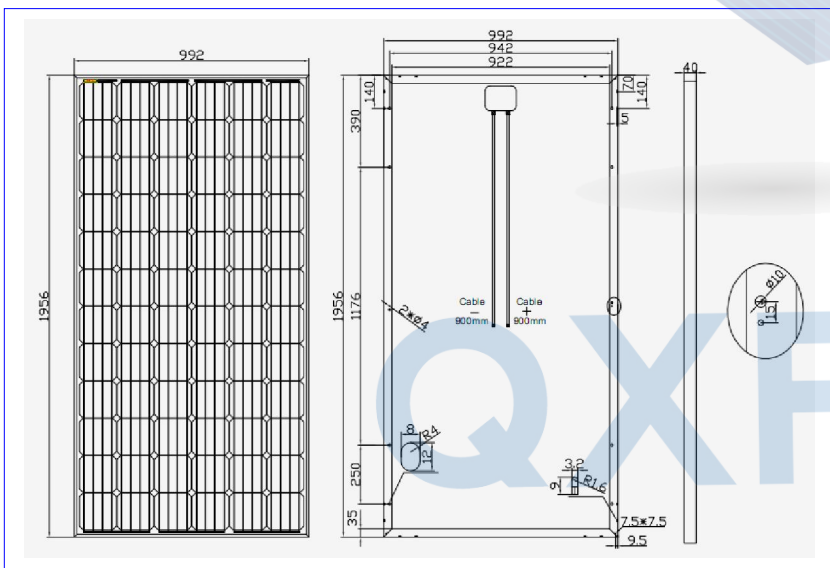
Applications

- ▣ On-grid residential roof-tops
- ▣ On-grid commercial/industrial roof-tops
- ▣ Solar power stations
- ▣ Other on-grid applications

Project Picture



Engineering Drawings



▣ Manufacturing facility certified to **ISO 9001 / ISO 14001 / OHSAS 18001** quality management system standards.

©2016 Ningbo Qixin Solar Electrical Appliance Co., Ltd. All rights reserved.

Specifications included in this datasheet are subject to change without notice.

Ningbo Qixin Solar Electrical Appliance Co., Ltd

ADD: No. 37 Jingang Road, Binhai Industrial Park, Xiangshan County, Ningbo, 315700, China

WEB: <http://www.nbqxsolar.com>

TEL: 0086-(0)574-25758823

FAX: 0086-(0)574-25758824

E-mail: sales@nbqxsolar.com

