



SOLARTECH[®]
POWER, INC.

W-Series 125W PV Module SPM125P-SWP-F

Solartech W-Series Modules

Solartech photovoltaic W-Series Modules are constructed with high efficient polycrystalline solar cells and produce higher output per module than others in its class. This industrial grade module is an industry standard among various industry professionals.

Features

Class 1, Division 2, (C1D2) Group A,B,C and D

- Accessible junction box with 4-1/2" knockout for ease of installation.
- (EVA) with TPT cushions the solar cells within the laminate and ensures the operating characteristics of the solar cells under virtually any climatic condition
- Rigid anodized aluminum frame and low iron tempered glass
- Easily accessible grounding points on all four corners for fast installation
- Proven junction box technology

Reliability

- Proven superior field performance
- Tight power tolerance

Qualifications and Certifications



Applications

- Traffic & Safety
- Federal Government
- Oil & Gas
- Security
- Telecommunications
- Water and Wastewater
- Weather & Environmental Monitoring
- RV Camper
- Emergency Power
- Telemetry
- SCADA, RTU, GPS
- Marine
- Area Lighting & Sign

Model Number SPM125P-SWP-F

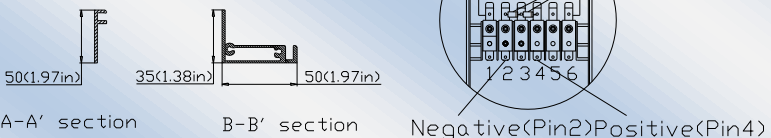
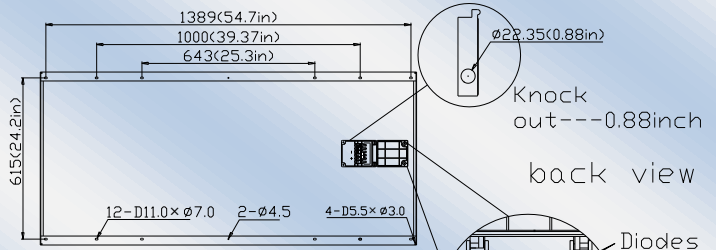
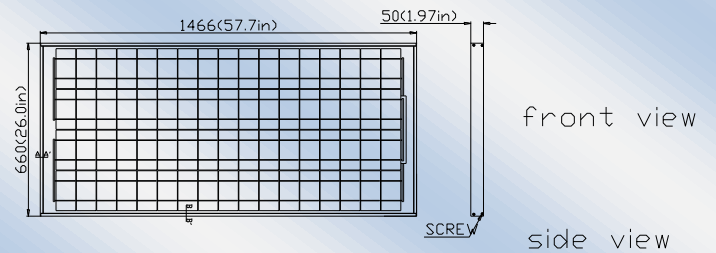
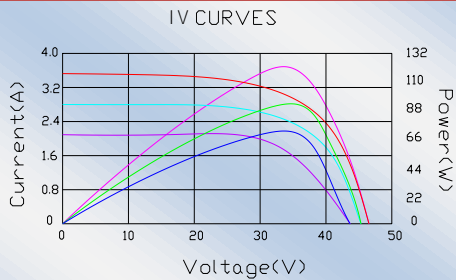
Electrical Characteristics

Max power(Pm)	125W
Maximum power voltage(Vpm)	34V
Maximum power current (Ipm)	3.75A
Short circuit current (Isc)	4.0A
Open circuit voltage (Voc)	41.5V
Module efficiency	12.47%
Tolerance	±5%
Nominal Voltage	24V
Temperature coefficient of Voc	-0.36%/K
Temperature coefficient of Pm	-0.46%/K
Temperature coefficient of Isc	0.05%/K
NOCT	48°C ± 2°C
Maximum series fuse rating	12A
Maximum system voltage	600V

Mechanical Characteristics

Construction	Tempered glass, silicon cell, EVA, Polyester with Tedlar
Solar Cells	36 cells (156mm x 78mm) in a 4x17 matrix connected in series
Front Cover	High transmission 3.2mm(1/8") glass
Encapsulant	EVA(Double layers)
Back Cover	White polyester
Frame	Anodized aluminum
Junction Box	IP65, UL94-5VA material
Diodes	Schottky by-pass diodes
Terminal	Accept 8-14 AWG wire
Dimensions	57.7in (1466mm)x26.0in (660mm)x1.97in (50mm)
Weight	26.51lb (12.0kg)
Operating Temperature	-40°C ~ 90°C
Storage Humidity	<90%

IV Curves



Warranty

25-year limited warranty of 80% power output;
12-year limited warranty of 90% power output;
5-year limited warranty of materials and workmanship

Certifications

UL 1703 certification
ETL Class I, Division 2, Groups A, B, C and D certification