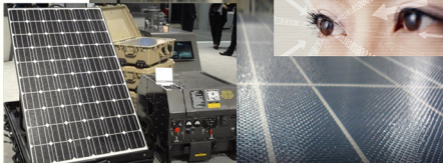




Módulo Solar NETGREEN 280W – NGS-6-280WB



NETGREEN SOLAR PANELS integrate an innovative high efficient solution for Solar Energy. This technology allows photovoltaic cells to be flexible so they can be adapted to any kind of surface. This creates a myriad of possibilities for equipment that requires easy, accessible and efficient energy source.

Applications:

Buildings Roofs

Highest Power Density and Lightweight – 177.6 Watts per square meter

Airport Signalling

For planes, airport vehicles or pedestrians

Agriculture

Illumination and Water Pumps.

MAIN ADVANTAGES:

Base Material: P-Type mono-crystalline silicon wafer

Revolutionary technology: Much more efficient than traditional solar panels (10% to 25% more energy in the same space) – High Power Density

Low Glare

Lightweight

Shatterproof / Impact

Water Resistant, IP 67

Advanced Materials

Model:	N60-280W
Nominal Maximum Power (Pmpp)	280W
Open Circuit Voltage (Voc)	39.6VDC
Short Circuit Current (Isc)	9.43A
Maximum Power Voltage (Vmpp)	33.16VDC
Maximum Power Current (Impp)	8.48A
Operating Temperature	-40°C ~ +90°C
Normal Operating Temperature	+40±5°C
Maximum System Voltage	600VDC
Temperature Coefficient	
Pmpp	-0.4000 %/K
Isc	0.0455 %/K
Voc	-0.3055 %/K
Cell Efficiency	20%
Dimensions (mm)	982 x 1653 x 38
Weight	10.9Kg
Mono-Crystalline Solar Cells	60

Measured at Standard Testing Conditions (STC)
Insulated for 90°C