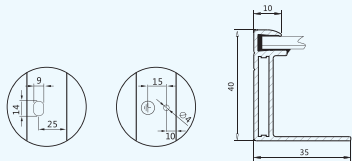
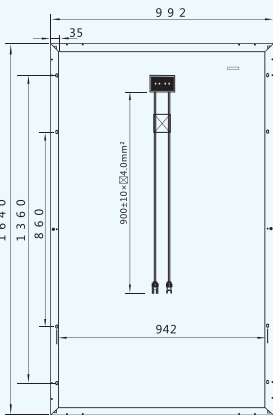
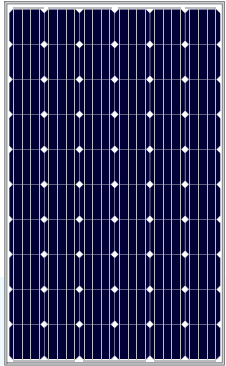


## LN260(30)MS-4 (270-285W Mono)



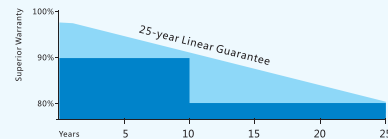
### Key Features

- Power output:(0-+5w)100%plus tolerance
- Safer solar:  
Panel-level disconnect to remotely deactivate module
- Quality insurance:25years irrevocable warranty insurance
- Harsh environment :  
By TUV nord harsh PID test, salt fog, ammonia test
- Mechanical load:  
5400pa snow load and2400pa wind load
- Low light performance:  
High performance in low solar irradiation
- After-sales service:Feedback in 24 hours

### Comprehensive Certificates

- IEC61215, IEC61730, IEC61701,
- TUV, UL, PV Cycle, JET, INMETRO,CEC, MCS, CE, IEC
- ISO9001:2008
- ISO14001:2004
- OHSAS 18001:1999

### Superior Warranty



#### 25-year Linear Power Output Warranty

In the first year of warranty, the peak power of poly-crystalline module should be no less than 97.5% of the rated power (Pmax.) and 96.5% for mono-crystalline module. At the end of the 25th year, power of modules should be at least 80% of rated power. The annual decline in performance is 0.70% maximum for poly-crystalline modules and 0.68% for mono-crystalline modules.

### Electrical Parameters@STC

Pmax (W)	Umpp (V)	Impp (A)	Uoc (V)	Isc (A)	FF	Module Efficiency	Max System Voltage	Max Series Fuse
270	31.47	8.58	34.70	9.10	76.87%	16.60%	1000V	15A
275	31.80	8.65	34.70	9.10	76.97%	16.90%	1000V	15A
280	32.04	8.74	34.70	9.10	76.98%	17.20%	1000V	15A
285	32.25	8.84	34.70	9.10	76.99%	17.50%	1000V	15A

### Temperature Coefficient

Temperature Cycling Range : -40°C ~ +85°C  
 Nominal Operating Cell Temperature : 46±2°C  
 Temperature Coefficient of Isc : 0.049%/°C  
 Temperature Coefficient of Voc : -0.000%/°C  
 Temperature Coefficient of Pmax : -0.439%/°C

### Mechanical Data

Module Dimension : 1640×992×40mm  
 Weight : 18.5kg  
 Snow/Wind Load : 5400/2400 Pa  
 Number of Cells : 60pcs  
 Thickness of Glass : 3.2mm  
 Junction Box : IP65 Rated  
 Cable: UL 12AWG/TUV 1x4.0mm²,length900mm

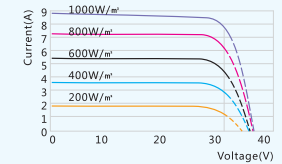
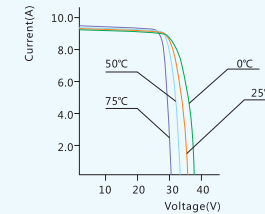
### Guarantee

10-year warranty on materials & workmanship  
 25-year linear power output warranty  
 (10 years at 90%, 25 years at 80%)

### Packaging Configuration

Modules Per Pallet: 26 pcs  
 Modules Per 40' HQ : 728 pcs

### 270W Mono Module I-V Curve



STC: Irradiance 1000W/m²  
 NOCT: Irradiance 800W/m²

Temperature 25°C  
 Temperature 20°C

AM=1.5  
 Wind Speed 1m/s



Specifications subject to technical changes and tests, Linuo Power reserves the right of final interpretation