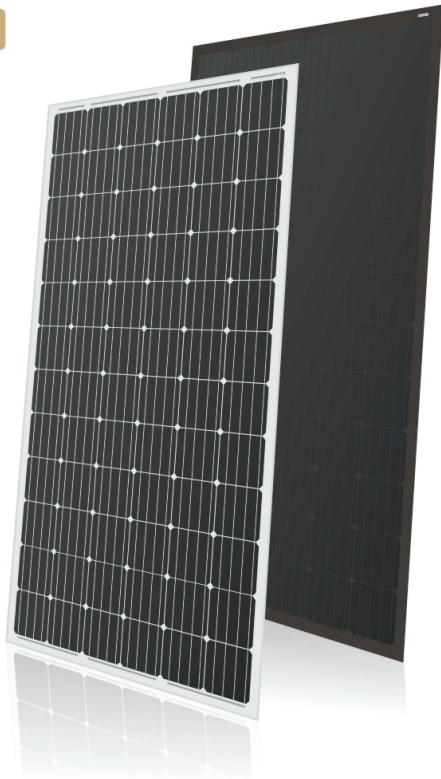


Premium



# SPI-72M



### Positive tolerance

Guaranteed power output positive tolerance from 0 to 3%.



### Smart auto-recognition of weak light performance

Smart light auto-recognition under the condition of low irradiance and hazy light (mornings, evenings and cloudy days).



### Steady resistance to strong hailstone, wind and snow loads

Special frame construction certified to ensure high wind loads (2400Pa), snow loads (5400Pa) and hailstone (40mm/4.5m/s).



### Fast Delivery

Worldwide network of over 7 warehouses in USA and EU, ensures the first-time delivery.

**17.01%**  
Max Module Efficiency

**330W**  
Max Power Output

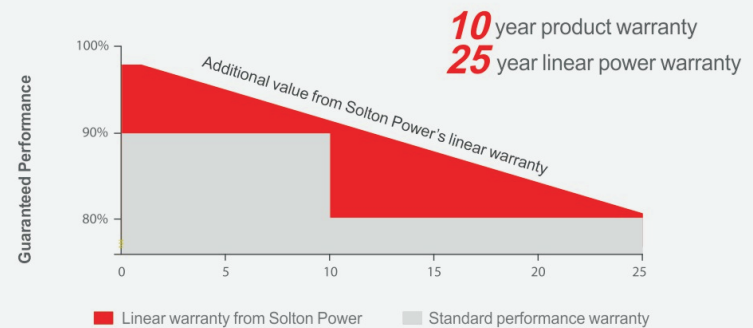
**10 Year**  
Product Warranty

**25 Year**  
Linear Power Warranty

## Certifications

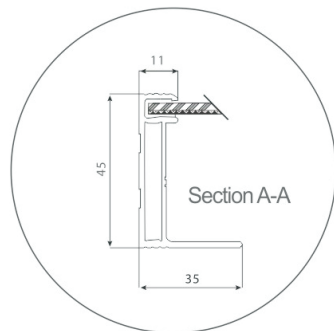
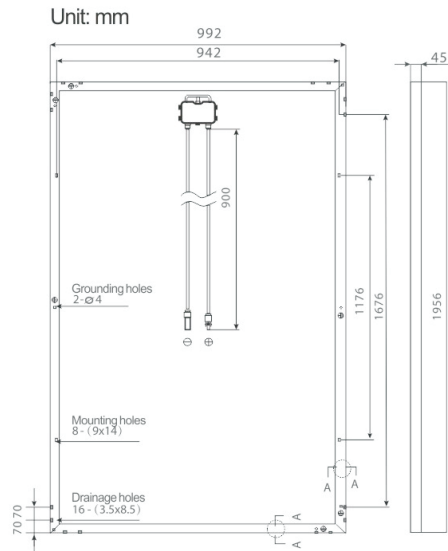


## Linear Performance Warranty



# SPI-72M

Premium



| Electrical Data @STC           | SPI-72-315M | SPI-72-320M | SPI-72-325M | SPI-72-330M |
|--------------------------------|-------------|-------------|-------------|-------------|
| Peak Power Watts-Pmax(Wp)      | 315         | 320         | 325         | 330         |
| Nominal Power Voltage-Vmp(V)   | 36.9        | 37.1        | 37.3        | 37.5        |
| Nominal Power Current-Imp(A)   | 8.54        | 8.63        | 8.71        | 8.80        |
| Open Circuit Voltage-Voc(V)    | 45.8        | 46.0        | 46.2        | 46.3        |
| Short Circuit Current-Isc(A)   | 9.09        | 9.15        | 9.22        | 9.29        |
| Module Efficiency- $\eta$ m(%) | 16.23       | 16.49       | 16.75       | 17.01       |

Values at Standard Test Conditions STC(Air Mass:AM1.5,Irradiance;1000W/M<sup>2</sup>,Cell Temperature:25).

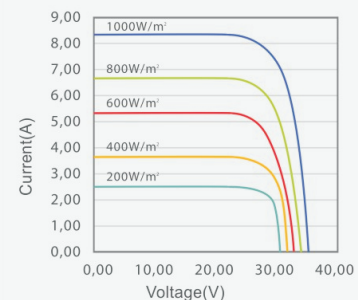
| Electrical Data @NOCT        | SPI-72-315M | SPI-72-320M | SPI-72-325M | SPI-72-330M |
|------------------------------|-------------|-------------|-------------|-------------|
| Peak Power Watts-Pmax(Wp)    | 226         | 229         | 232         | 235         |
| Nominal Power Voltage-Vmp(V) | 33.7        | 33.8        | 33.9        | 34.0        |
| Nominal Power Current-Imp(A) | 6.71        | 6.78        | 6.84        | 6.91        |
| Open Circuit Voltage-Voc(V)  | 41.7        | 41.8        | 41.9        | 42.0        |
| Short Circuit Current-Isc(A) | 7.22        | 7.29        | 7.36        | 7.45        |

NOCT:Irradiance at 800W/M<sup>2</sup>,Ambient Temperature:20°C,Wind Speed 1m/s.

| Operating Conditions        |                     |
|-----------------------------|---------------------|
| Maximum System Voltage      | 1000V <sub>DC</sub> |
| Max Series Fuse Rating      | 15A                 |
| Operating Temperature Range | -40°C~+85°C         |
| Max.Static Load,Front       | 5400Pa              |
| Max.Static Load,Back        | 2400Pa              |
| Max.Hailstone Impact        | 40mm/4.5m/s         |

| Mechanical Data   |  |
|-------------------|--|
| Solar Cells       | Monocrystalline 156*156mm(6 inches)  |
| Cells Orientation | 72cells(6*12)  |
| Module Dimension  | 1956*992*45mm  |
| Weight            | 22.5kg   |
| Glass             | High transparency and low-iron tempered solar glass 3.2mm(0.13 inches)                           |
| Frame             | Silver color anodized aluminum alloy   |
| Junction Box      | IP 67 rated  |
| Cable             | Photovoltaic technology cable:4.0mm <sup>2</sup> (0.006 inches <sup>2</sup> ),900mm(35.4 inches) |
| Connector         | MC4 Compatible/IP65 or MC4 Original/IP67   |

## I-V Curves of PV Module SPI-72M



Average efficiency reduction of 4.5% at 200W/m<sup>2</sup> according to EN 60904-1.

## Temperature Ratings

|  |             |
|--|-------------|
| Nominal Operating Cell Temperature(NOCT) | (45±3)°C    |
| Temperature Coefficient of Pmax          | (-0.402)%/k |
| Temperature Coefficient of Voc           | (-0.332)%/k |
| Temperature Coefficient of Isc           | (0.087)%/k  |



## Warranty

- 10 year workmanship warranty
- 25 year linear performance warranty

## Packaging Configuration

23pcs per ctn+38pcs per ctn,2pcs per box,(2ctns+2boxes) per plt,10 plts(50pcs)+1plt(80pcs),580 per 40'HQ



Warning:read the installation manual before handing,installing and operating soltonpower modules.  
All rights reserved.Specifications include in this datasheet are subject to change without notice.

Address: 4575 Edison Ave.,Chino 91710 California ,U.S.A. Tel: +1 909 345 0694 Fax: +1 909 597 0469