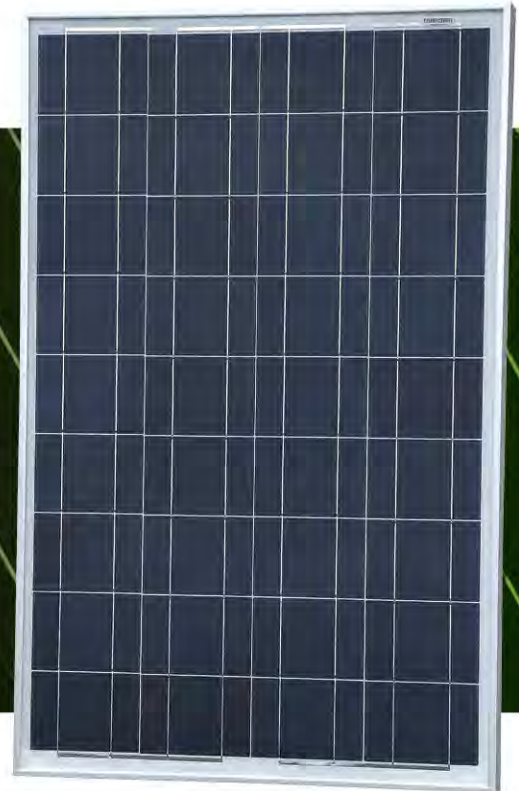


# P36PCS(POLY)

5W~110W

## PRODUCT SPECIFICATION

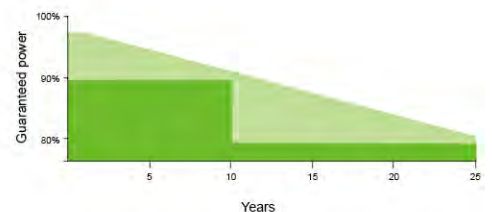


- Industry leading module power output warranty
- International quality, safety and performance certifications
- Manufacturing facility certified to ISO9001 quality management system standards
- Beautiful appearance, good durability & easy installation
- Special design in accordance with requirements of customers



## WARRANTIES

- 12 years for product defects in materials & workmanship
- 12 years for 90% of warranted minimum power output
- 25 years for 80% of warranted minimum power output
- 25 years linear warranty



**QUALITY DESIGN | GREAT DURABILITY | EASY INSTALLATION**

## P36PCS(POLY) 70W~110W PRODUCT SPECIFICATION

Model type	110W	90W	85W	80W	75W	70W
Peak power(Pmax)	110W	90W	85W	80W	75W	70W
Weight	9.18kg	7.76kg	7.35kg	7.02kg	6.62kg	6.29kg
Dimensions(mm)	1170x670x35	975x670x35	920x670x35	875x670x35	820x670x35	775x670x35
Maximum power voltage (Vmp)	17.5V	17.5V	17.5V	17.5V	17.5V	17.5V
Maximum power current (Imp )	6.29A	5.143A	4.86A	4.58A	4.29A	4A
Open circuit voltage (Voc)	21.6V	21.6V	21.6V	21.6V	21.6V	21.6V
Short circuit current (Isc)	7.10A	5.81A	5.49A	5.17A	4.84A	4.52A
Cell efficiency	16.50%	16.50%	16.50%	16.50%	16.50%	16.50%
Maximum system voltage	DC 1000V					
Temp.Coeff.of Isc(TK Isc)	0.045%/°C					
Temp.Coeff.of Voc(TK Voc)	-0.34%/°C					
Temp.Coeff.of Pmax(TK Pmax)	-0.47%/°C					
Normal Operating Cell Temperature	45±2°C					
Tolerance	±3%					

## P36PCS(POLY) 30W~60W PRODUCT SPECIFICATION

Model type	60W	55W	50W	45W	40W	30W
Peak power(Pmax)	60W	55W	50W	45W	40W	30W
Weight	5.52kg	5.19kg	4.82kg	4.42kg	4.09kg	3.36kg
Dimensions(mm)	675x670x30	630x670x30	580x670x30	525x670x30	480x670x30	380x670x30
Maximum power voltage (Vmp)	17.5V	17.5V	17.5V	17.5V	17.5V	17.5V
Maximum power current (Imp )	3.43A	3.143A	2.86A	2.57A	2.29A	1.72A
Open circuit voltage (Voc)	21.6V	21.6V	21.6V	21.6V	21.6V	21.6V
Short circuit current (Isc)	3.87A	3.55A	3.23A	2.9A	2.59A	1.93A
Cell efficiency	16.50%	16.50%	16.50%	16.50%	16.50%	16.50%
Maximum system voltage	DC 1000V					
Temp.Coeff.of Isc(TK Isc)	0.045%/°C					
Temp.Coeff.of Voc(TK Voc)	-0.34%/°C					
Temp.Coeff.of Pmax(TK Pmax)	-0.47%/°C					
Normal Operating Cell Temperature	45±2°C					
Tolerance	±3%					

## P36PCS(POLY) 5W~20W PRODUCT SPECIFICATION

Model type	20W	15W	10W	5W
Peak power(Pmax)	20W	15W	10W	5W
Weight	2.11kg	1.71kg	1.09kg	0.73kg
Dimensions(mm)	475x350x25	375x350x25	270x350x17	170x350x17
Maximum power voltage (Vmp)	17.5V	17.5V	17.5V	17.5V
Maximum power current (Imp )	1.15A	0.86A	0.58A	0.29A
Open circuit voltage (Voc)	21.6V	21.6V	21.6V	21.6V
Short circuit current (Isc)	1.3A	0.97A	0.65A	0.33A
Cell efficiency	16.50%	16.50%	16.50%	16.50%
Maximum system voltage	DC 1000V			
Temp.Coeff.of Isc(TK Isc)	0.045%/°C			
Temp.Coeff.of Voc(TK Voc)	-0.34%/°C			
Temp.Coeff.of Pmax(TK Pmax)	-0.47%/°C			
Normal Operating Cell Temperature	45±2°C			
Tolerance	±3%			

