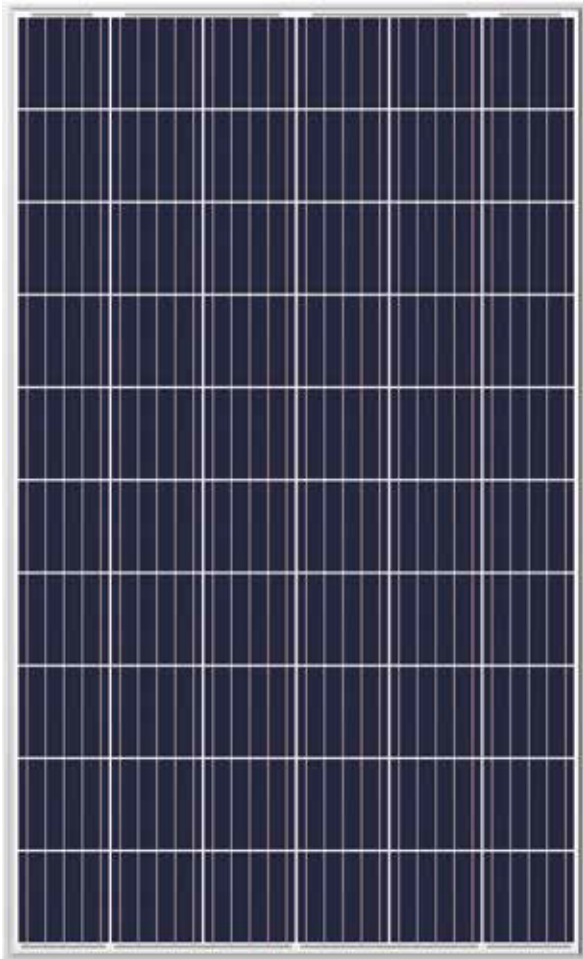


265-280_w



MANAGEMENT SYSTEM

ISO 9001: Quality management system

ISO 14001: Standard for environmental management system

OHSAS 18001: International standard for occupational health and safety assessment system

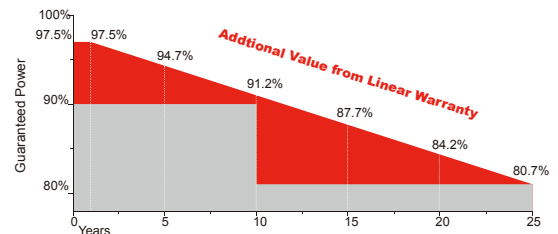
PRODUCT CERTIFICATES



INSURANCE



WARRANTY



Guarantee on product material and workmanship



linear power output warranty

Safety



Withstand and applicable up to 1500V high system voltage



Tested and certified according to newest IEC standard IEC61730-1:2016 IEC61730-2:2016



Class C fire safety class

Reliability



Tested and certified according to newest IEC standard IEC61215:2016



World 1st company to pass "Thresher Test" and "On-site Power Measurement Validation" certificate



Bankable products

Performance



Outstanding power output capability at low irradiance



Triple 100% Electroluminescence (EL) tests minimize breakage rate



Top rank in Photon yield measurement

SRP-6PB-HV SERIES 6 INCH 60 CELLS



*BLACK FRAME / BLACK BACK-SHEET PRODUCTS ARE AVAILABLE UPON REQUEST.

Electrical Characteristics(STC)

Module Type	SRP-265-6PB-HV	SRP-270-6PB-HV	SRP-275-6PB-HV	SRP-280-6PB-HV
Maximum Power at STC - P_{mp} (W)	265	270	275	280
Open Circuit Voltage - V_{oc} (V)	38.3	38.5	38.8	39.0
Short Circuit Current - I_{sc} (A)	8.83	8.94	9.02	9.12
Maximum Power Voltage - V_{mp} (V)	31.1	31.3	31.6	31.8
Maximum Power Current - I_{mp} (A)	8.53	8.63	8.71	8.81
Module Efficiency STC- η_m (%)	16.19	16.50	16.80	17.1

STC: Irradiance 1000 W/m² module temperature 25°C AM=1.5
Power measurement tolerance: +/-3%

Electrical Characteristics(NOCT)

Module Type	SRP-265-6PB-HV	SRP-270-6PB-HV	SRP-275-6PB-HV	SRP-280-6PB-HV
Maximum Power at NOCT - P_{mp} (W)	196	200	203	206
Open Circuit Voltage - V_{oc} (V)	35.3	35.5	35.7	35.9
Short Circuit Current - I_{sc} (A)	7.14	7.22	7.29	7.36
Maximum Power Voltage - V_{mp} (V)	29.1	29.3	29.5	29.7
Maximum Power Current - I_{mp} (A)	6.74	6.83	6.88	6.94

NOCT: Irradiance 800 W/m² ambient temperature 20°C wind speed :1m/s
Power measurement tolerance: +/-3%

Power Tolerance (W)	(0,+4.99)
Maximum System Voltage (V)	1500 (TÜV)
Maximum Series Fuse Rating (A)	15

Temperature Characteristics

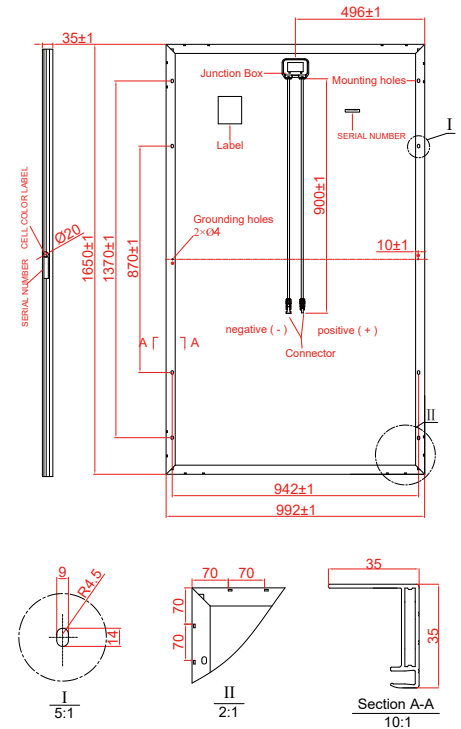
Pmax Temperature Coefficient	-0.41 %/°C
Voc Temperature Coefficient	-0.32 %/°C
Isc Temperature Coefficient	+0.05 %/°C
Operating Temperature	-40~+85 °C
Nominal Operating Cell Temperature (NOCT)	45±2 °C

Packing Configuration

	1650 x 992 x35mm	
Container	20'GP	40'GP
Pieces per Pallet	30	30
Pallets per Container	12	28
Pieces per Container	360	840

Mechanical Specifications

External Dimensions	1650x 992 x 35mm
Weight	18.5 kg
Solar Cells	Poly crystalline 156.75 x 156.75 mm (60pcs)
Front Glass	3.2 mm tempered glass, low iron
Frame	Anodized aluminium alloy
Junction Box	IP67
Output Cables	4.0 mm ² , cable length: 900 mm
Connector	MC4 Compatible
Mechanical Load	5400 Pa



* All Dimensions in mm

* The above drawing is a graphical representation of the product.
For engineering quality drawings please contact SERAPHIM.

I-V Curve (SRP-265-6PB-HV)

