

Smart Panel series

250W / 260W / 265W 54 CELLS COMPACT MODUCE

High Efficiency PERC Cells



**UK
SOLAR POWER**



12
YEAR

PRODUCT
WARRANTY

12
YEAR

PERFORMANCE
WARRANTY (90%)

30
YEAR

PERFORMANCE
WARRANTY (80%)

+3%

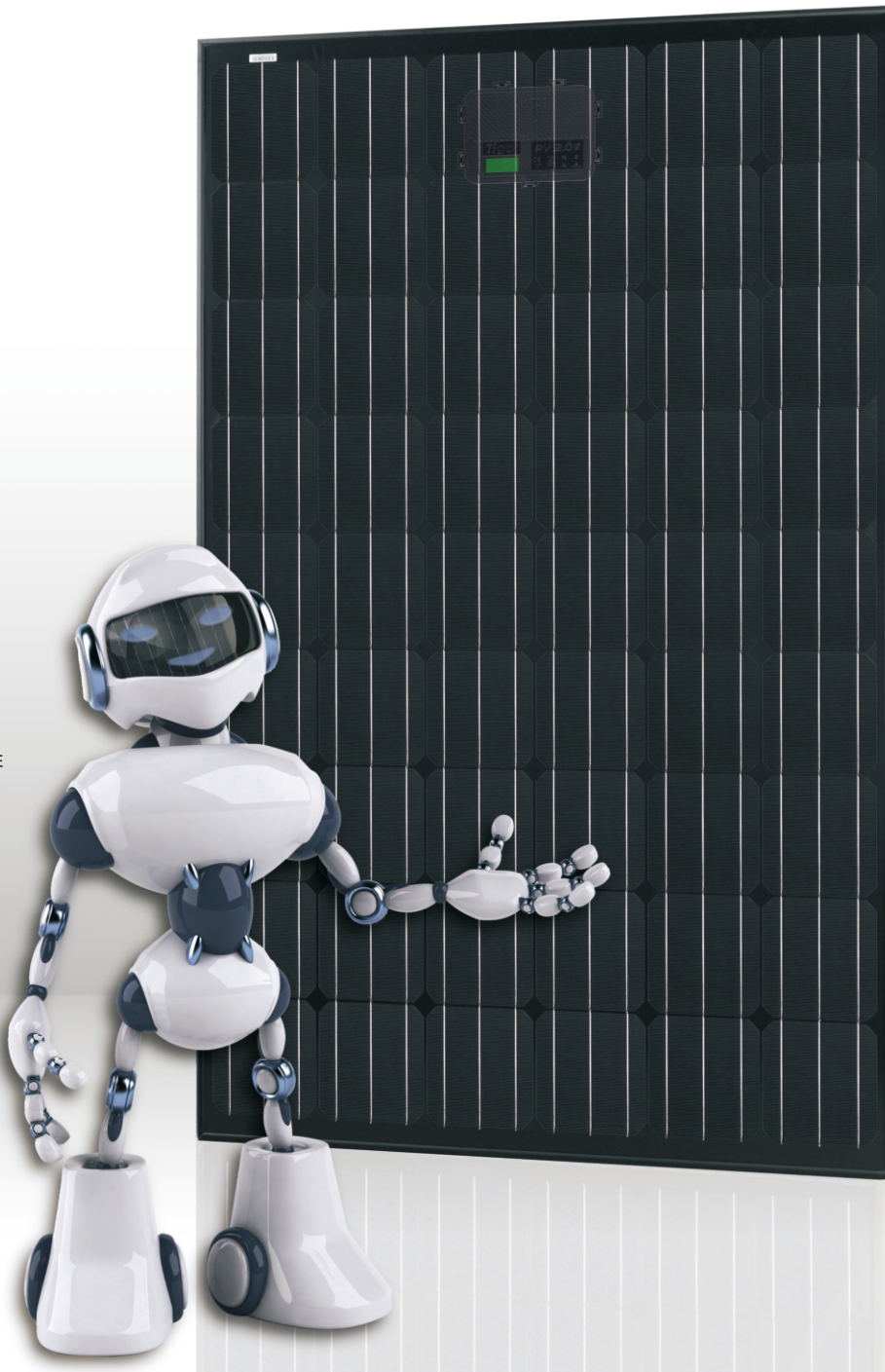
POSITIVE TOLERANCE

20.8%

CELL
EFFICIENCY

17.8%

MODULE
EFFICIENCY



**TIGO SMART
JUNCTION BOX**



DIODES

MONITORING

SAFETY

OPTIMIZATION

LONGER STRINGS

SMART SERIES: UK250MB54 MONOCRYSTALLINE SILICON SOLAR MODULE

COMPACT SIZE. IDEAL FOR SMALLER ROOFS.
SAME POWER OUTPUT AS STANDARD SIZE PANEL.
EASIER TO HANDLE. NEW JUNCTION BOX



