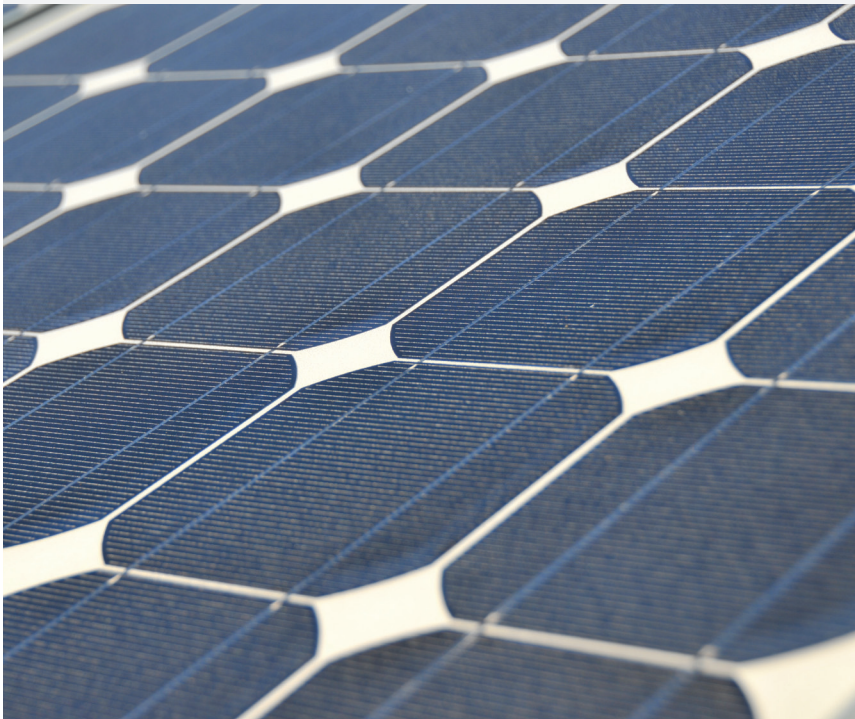


With superior plurawatt technology



Meet the high performance product range of Plurawatt, manufactured with cutting edge technology.

PROPERTIES

- Plurawatt panels and assembly elements, with their high design features offer fast, easy and reliable system solutions.
- Plurawatt panels, with their efficiency and positive output tolerance, offer the one of the best norms of the market.
- Plurawatt DC M72 panels have 72 cells.
- Thanks to its purpose designed aluminum frame, compared to its competitors it enables easier assembly in roof and ground surface applications and ventilation corridor through the back surface of the panel.

QUALITY ASSURANCE

- The compliance of the Plurawatt Panels with IEC 61730, 61215 and 61701 have been certified and approved.
- As compliant to the industry specific norms, provide %90 efficiency at the end of its first 10 years and %80 in its 20 years of use.

FIELDS OF USE

- Residences with the grid connection
- Commercial and industrial facilities with grid connection
- Agricultural applications with grid connection
- Solar power plants

CUSTOMER SERVICES
444 9288
W A T T
info@plurawatt.com

www.plurawatt.com

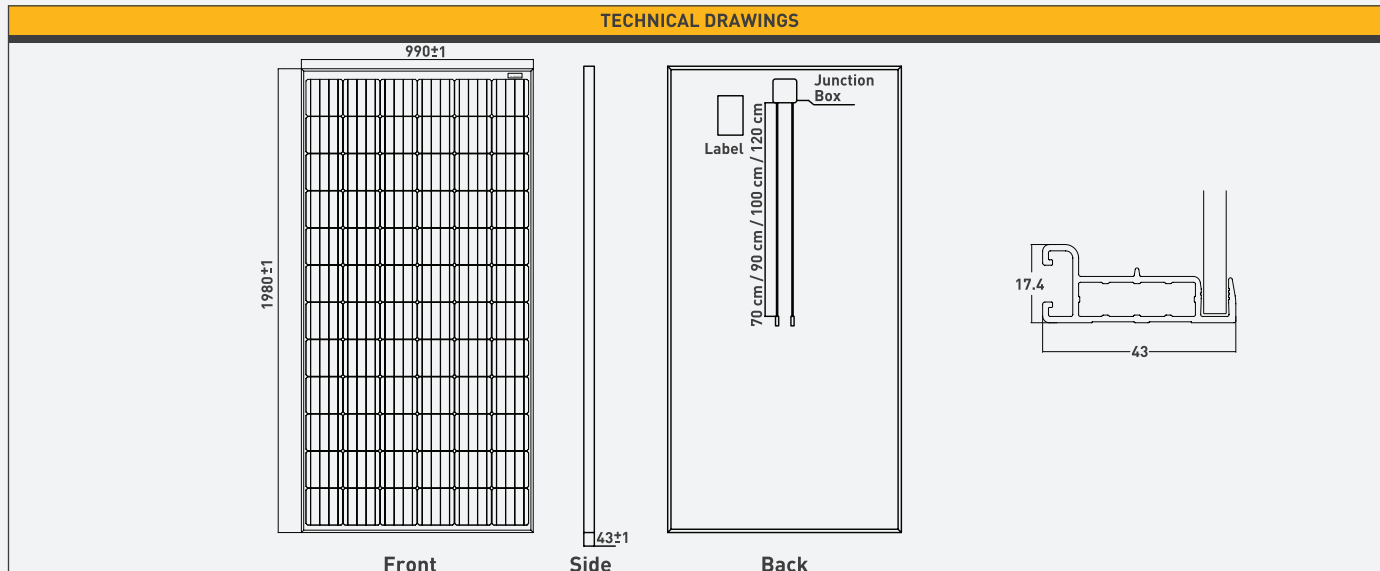
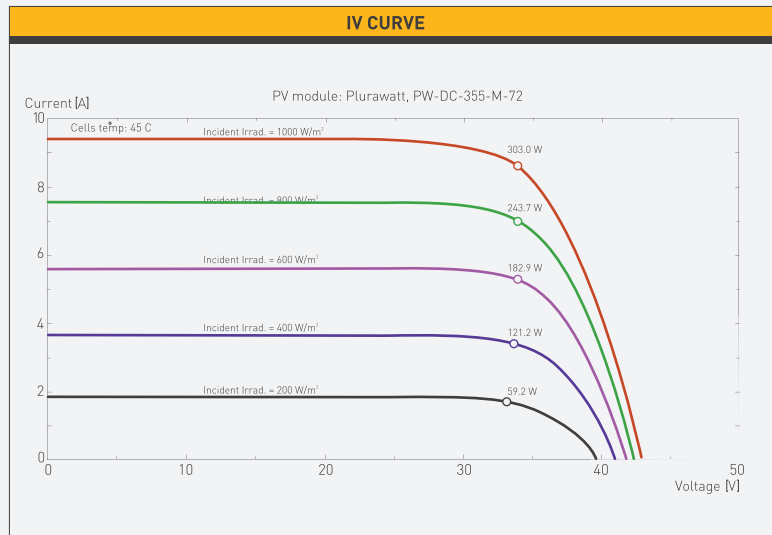
PLURAWATT DC 72 - MONOCRYSTALLINE PANEL ELECTRICAL CHARACTERISTICS					
Power Class	350	355	360	365	370
Cell Type	Monocrystalline PERC Cell				
Panel Type	PW DC 350 M 72	PW DC 355 M 72	PW DC 360 M 72	PW DC 365 M 72	PW DC 370 M 72
Nominal Power Range	Power classification has positive tolerance, between 0 and +5Wp.				
Vmp	38,47	38,62	38,71	38,83	38,95
Imp	9,15	9,26	9,34	9,42	9,54
Voc	47,34	47,5	47,63	47,79	47,92
Isc	9,7	9,81	9,89	9,97	10,05
Temperature Coefficient of Pmax (TPmax)	- 0.414 % / °C				
Temperature Coefficient of Isc (Tisc)	+ 0.047 % / °C				
Temperature Coefficient of Voc (TVoc)	- 0.32 % / °C				
Temperature Coefficient of Vmp (TVmp)	- 0.387 % / °C				
Module operating temperature range	-40 °C +85 °C				
Maximum system voltage	UL : 600V / IEC : 1000V				
Nominal Operating Cell Temperature (NOCT)	45 ± 2 °C				

STC (25 °C Ambient Temp., 1000W/m² Irradiance, AM 1.5). All values are measured at peak points at STC. - All values indicated in the table above is measured with %-+3 tolerance.

Each Plurawatt panel is measured at STC, measurements can be found on the label at backside of the panel.

The information in this datasheet is subject to change without notice, provided for informational purposes only.

PHYSICAL CHARACTERISTICS	
Cell Type	4BB/5BB PERC Monocrystalline 156.75 x 156.75mm
Number of Cells	72 (6 x 12)
Dimensions	1980 x 990 x 43 mm
Weight	21,7 kg
Glass	3.2mm, High Permeable, Low Iron Tempered Solar Glass
Frame	Anodized aluminum alloy
Junction Box	IP 65 - 3 bypass diodes (15A)
Cables	2 x (1 x 4 mm ²), 100cm / 120cm
Max. Load	2.4kPa wind load, 5.4kPa snow load
PACKING and SHIPMENT INFORMATION	
Palet	25 pcs
Truck(7.2 x 2.45m)	7 pallet 175 pcs
Long Haul Truck (13.6x2.45m)	13 pallet 325 pcs
Container 40' (12x2.35m)	12 pallet 300 pcs



Rev: 01



Sunlego Enerji Sistemleri Sanayi ve Ticaret A.Ş.
T: +90 312 640 1 641 F: +90 312 640 1 642
Başkent Organize Sanayi Bölgesi Malıköy - 06909
Sincan - Ankara-TÜRKİYE M: info@plurawatt.com



www.plurawatt.com

