



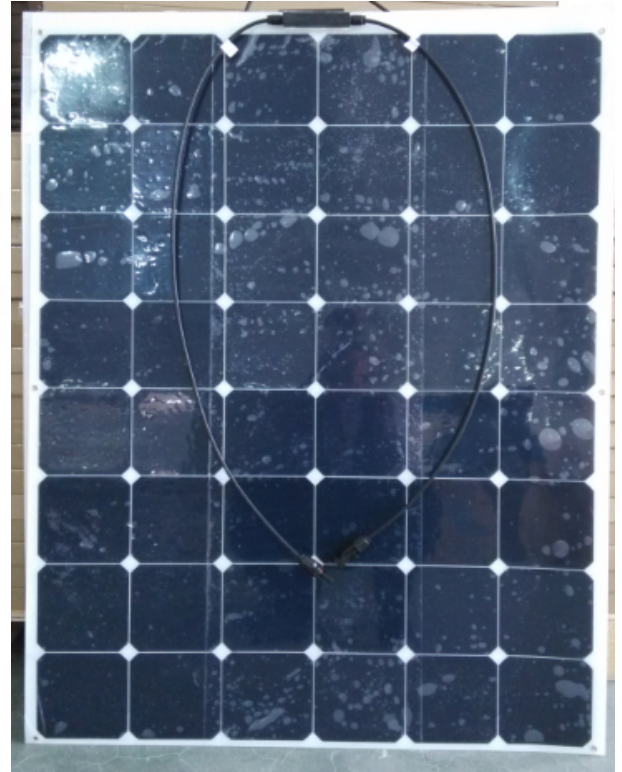
150 Watt Monocrystalline Bendable Photovoltaic Module

Made with high efficiency back-contact solar cells

SFED-F150SP

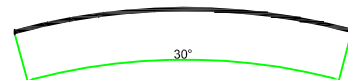
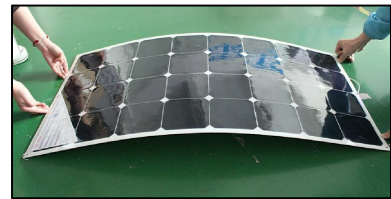
Electrical Characteristics

Max Power	Pmax	150W
Max Power Voltage	Vmp	26.8V
Max Power Current	Imp	5.60A
Open Circuit Voltage	Voc	32.2V
Short Circuit Current	Isc	6.15A
Maximum System Voltage		600V
Series Fuse Rating		15A
Temperature Co-efficients		
	Power	-0.38%/°C
	Voltage	-60.8mV/°C
	Current	2.2mA/°C
Cell Efficiency		20.80%
Number of Cells in Series		6*8=48
Max Power tolerance		±5%



Mechanical Characteristics

Weight	2.7KG
Dimension	1060*796*3mm (Junction box on the front)



Maximum recommended bending degree: 30 degree