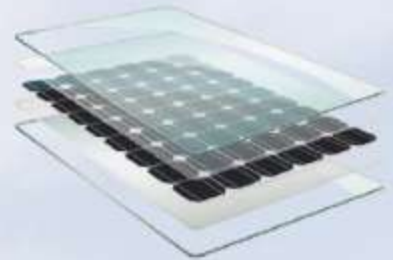


Double Glass BIPV Module

Model	P_{max} [W]	V_{oc} [V]	I_{sc} [A]	$V_{P_{max}}$ [V]	$I_{P_{max}}$ [A]	Dimensions[mm]	Weight [kg]
MLTQ335	335	46.1	9.31	37.4	8.96	1968*992	27
MLTQ330	330	46	9.22	37.3	8.85		
MLTQ325	325	45.9	9.12	37.2	8.74		
MLTQ320	320	45.8	9.03	37.1	8.63		
MLTQ315	315	45.7	8.93	37	8.51		
MLTQ310	310	45.6	8.83	36.9	8.4		
MLTQ280	280	38.4	9.23	31.2	8.96	1658*992	22.5
MLTQ275	275	38.3	8.95	31.1	8.85		
MLTQ270	270	38.2	8.89	31	8.71		
MLTQ265	265	38.1	8.83	30.9	8.59		
MLTQ260	260	38	8.77	30.8	8.44		
MLTQ255	255	37.9	8.71	30.7	8.31		
PLTQ325	325	45.9	9.12	37.2	8.74	1968*992	27
PLTQ320	320	45.8	9.02	37.1	8.63		
PLTQ315	315	45.7	8.93	37	8.51		
PLTQ310	310	45.6	8.83	36.9	8.4		
PLTQ305	305	45.5	8.73	36.8	8.29		
PLTQ300	300	45.4	8.63	36.7	8.17		
PLTQ270	270	38	9.34	30.9	8.74	1658*992	22.5
PLTQ265	265	37.9	9.25	30.8	8.62		
PLTQ260	260	37.8	9.16	30.7	8.51		
PLTQ255	255	37.7	9.06	30.6	8.36		
PLTQ250	250	37.6	8.97	30.5	8.22		
PLTQ245	245	37.5	8.82	30.4	8.06		



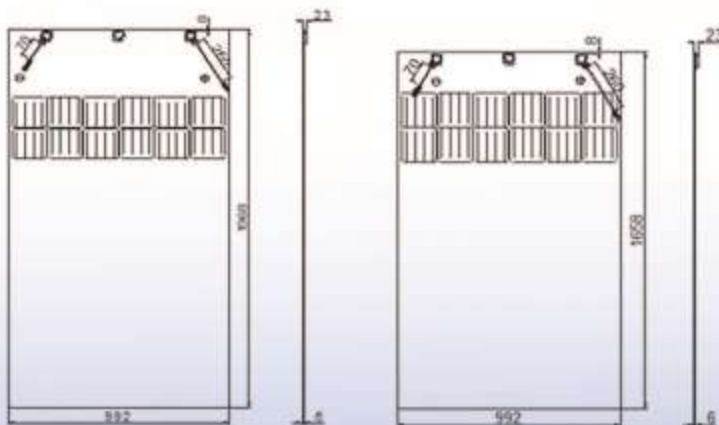
DOUBLE GLASS MODULE FOR BIPV
 GLASS AS BACK SHEET
 FIREPROOF AND MUCH SAFER
 0+3% POWER OUTPUT GUARANTEE
 10 YEAR MATERIAL & WORKMANSHIP WARRANTY
 30 YEAR LINEAR POWER WARRANTY

Maximum System Voltage	1500 V
Operating Temperature	-40-85°C
Snow Load	5400Pa
Wind Load	2400Pa
Nominal Operating Temperature	46±2K
P_m Temperature Coefficient	-0.44 %/K
V_{oc} Temperature Coefficient	-0.33 %/K
I_{sc} Temperature Coefficient	0.07 %/K

STC: Irradiance 1000 W/m², Cell Temperature 25°C, Air Mass AM1.5 according to EN 60904-3.

Average efficiency reduction of 4.5% at 200 W/m² according to EN 60904-1.

IEC 61215, IEC 61646, IEC 61730, TUV, CE, CQC
 ISO 9001:2008, ISO 14001:2004, OHSAS18001:2007



For more detail of each model please refer to the module specification.