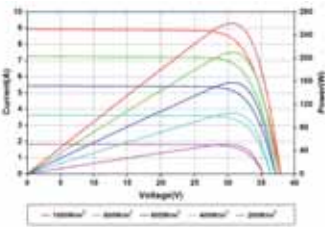
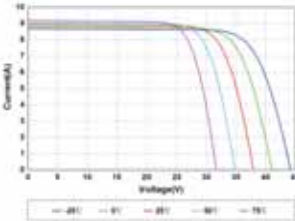


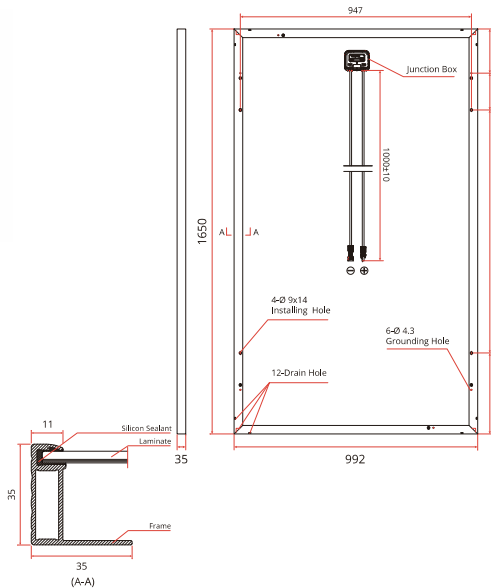
Futuresolar Standard 60Cells Mono Solar Panel



Current-Voltage and Power-Voltage Curves at Different Irradiances



Current-Voltage Curves at Different Temperatures



ELECTRICAL CHARACTERISTICS	AT STC							
Nominal Power (P_{max})	240W	245W	250W	255W	260W	265W	270W	275W
Open Circuit Voltage (V_{oc})	37.1V	37.2V	37.3V	37.4V	37.5V	37.6V	37.7V	37.8V
Short Circuit Current (I_{sc})	8.52A	8.62A	8.72A	8.82A	8.91A	9.01A	9.10A	9.20A
Voltage at Nominal Power (V_{mp})	30.3V	30.4V	30.5V	30.6V	30.7V	30.8V	30.9V	31.0V
Current at Nominal Power (I_{mp})	7.92A	8.06A	8.20A	8.34A	8.48A	8.61A	8.74A	8.88A
Module Efficiency (%)	14.75	15.06	15.37	15.67	15.98	16.29	16.60	16.90
Operating Temperature	-40°C to +85°C							
Maximum System Voltage	1000V DC							
Fire Resistance Rating	Class C (IEC61730)							
Maximum Series Fuse Rating	15A							

STC: Irradiance 1000W/m², Cell temperature 25°C, AM1.5