

EWVO

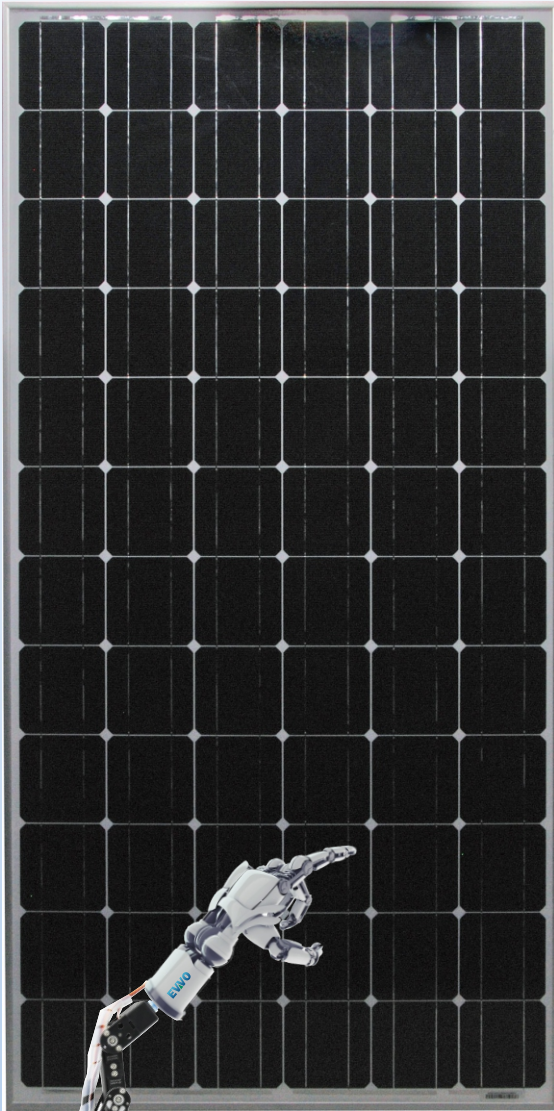
WORLD CLASS SOLAR MODULES

72 Cells
Monocrystalline
Module

355-370W
Power Output Range

18.3-19.1%
Maximum Efficiency

0~+5w
Power Tolerance



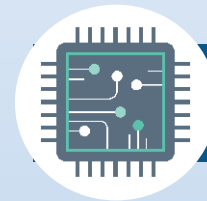
ROBOTIC PLANT

PRODUCT WARRANTY
12
Years
PRODUCT WARRANTY

PERFORMANCE WARRANTY
30
Years
PERFORMANCE WARRANTY



WORLD
CLASS
PRODUCTS



FULLY
AUTOMATED
ADVANCED
SOLAR PLANT

100%

100%
A GRADE
CELLS ONLY



EVERY
MODULE DOUBLE
TESTED
& CHECKED



PRODUCTION
BASE IN
VIETNAM



NO
COMPROMISE
ON QUALITY



CE

IEC





WORLD CLASS SOLAR MODULES

EVVO - V - Series - 72M (PERC)

PRODUCT SPECIFICATION

■ DEAL FOR LARGE SCALE INSTALLATIONS

High power footprint reduces installation time and BOS costs

1500V UL/1500V IEC certified

■ ONE OF THE INDUSTRY'S MOST TRUSTED MODULES

Field proven performance

Strong, reliable supplier

■ HIGHLY RELIABLE DUE TO STRINGENT QUALITY CONTROL

Over 30 in-house tests (UV, TC, HF, and many more)

In-house testing goes well beyond certification requirements

100% EL double inspection

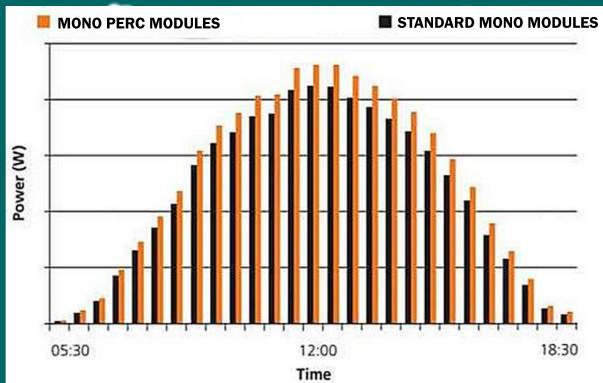
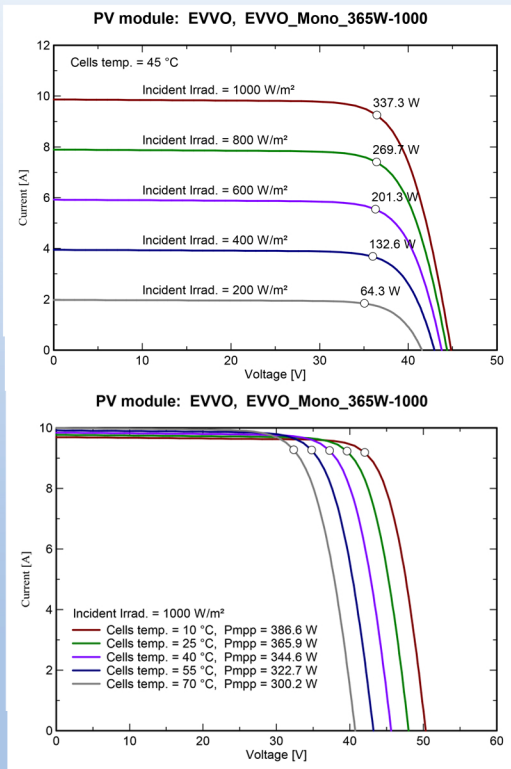
■ CERTIFIED TO WITH STAND CHALLENGING ENVIRONMENTAL CONDITIONS

2400 Pa wind load

35 mm hail stones at 97 km/h

5400 Pa wind load

PID resistant



What makes PERC tech different?

PERC integrates back surface passivation, front surface advanced passivation and anti-light-induced degradation technologies.

PERC cells, on the other hand, employ two different features not found in conventional cells. These include applying a passivation film on the rear surface of the cell and using chemicals to create tiny pockets in the film that absorb more light and involves adding a dielectric passivation layer to the rear of the solar cell.

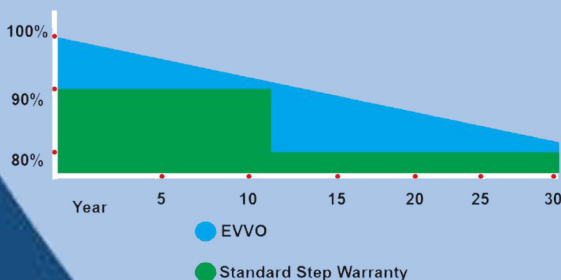
The cell's front side receives direct sunlight while the rear side soaks up scattered and reflected light.

These additional features create a three-part advantage:

- A significant reduction in electron recombination. Greater absorption of light.
- Higher internal reflectivity.
- Combined, these three benefits boost energy generation in solar PERC cells compared to conventional ones.

LINEAR PERFORMANCE WARRANTY

12 Year Product Warranty
30 year Linear Power Warranty



Electrical Specifications (standard test conditions)

Maximum Power -P _{MAX} (Wp)	355	360	365	370
Power Tolerance-P _{MAX} (W)	0 ~ +5%			
Maximum power point of operating voltage-P _{MPP} (V)	38.7	38.9	39.1	39.3
Maximum power point of operating current)-I _{MPP} (A)	9.17	9.26	9.35	9.44
Open circuit voltage-V _{oc} (V)*	47.0	47.2	47.3	47.5
Short circuit current- IM (A)	9.69	9.79	9.88	9.97
Module Efficiency η_{m} (%)	18.3	18.5	18.8	19.1

Standard test conditions under Measured Value:(air quality AM1.5, Irradiance 1000W / m² cell temperature 25 °C)

Electrical Index (under nominal operating cell temperature conditions)

Maximum Power-P _{MAX} (Wp)	264	268	272	276
Maximum power point of operating voltage-P _{MPP} (V)	35.8	35.9	36.1	36.3
Maximum power point of operating current)-I _{MPP} (A)	7.40	7.47	7.54	7.61
Open circuit voltageV _{oc} (V)*	43.7	43.8	43.9	44.0
Short circuit current- IM (A)	7.82	7.88	7.92	7.98

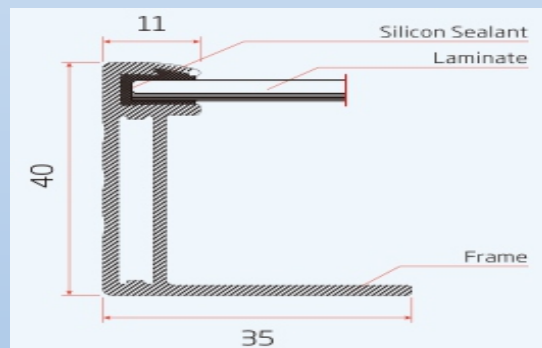
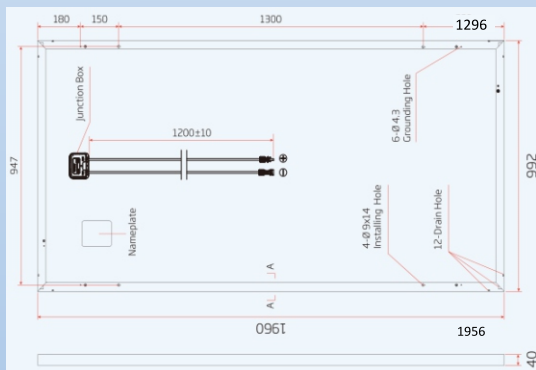
NOCT: Irradiance 800W / m² ambient temperature of 20 °C, wind speed 1m .

Mechanical Specifications:

Solar cell Type	156.75mm x156.75mm Mono-crystalline
Number of Cells	1 module 72pieces (6 x12)
Dimensions	1956 x992 x40 mm
Weight	22.5 kg -26kg(glass 3.2/4.0mm)
Glass	3.2mm/4.0mm, High transparency, anti-reflective coatings toughened glass
Backsheet	White/black
Frame	Silver, anodized aluminum
Junction Box	Protection level IP 68
Cable	4.0 mm ² 1200 mm Photovoltaic dedicated cable:
Connector	MC4 compatible

Temperature Rating

	Limit parameter		
Nominal Operating Cell Temperature (NOCT)	44°C (±2°C)	Working Temperature	-40~+85°C
Maximum power (P _{MAX}) Temperature Coefficient	-0.39%/°C	Maximum system voltage	1500V DC (IEC)
Open circuit voltage (VOC) Temperature Coefficient	-0.29%/°C		1500V DC (UL)
Short circuit current (ISC) Temperature Coefficient	0.05%/°C	Maximum fuse rated Current	15A



P72 Module Packing

Name	Dimensions (mm)	Weight (kg)
Pallet	1995*1120*145mm	25
Carton Box(26pcs)	1992*1114*1000mm	12
Carton Box (2pcs)	1975*1000*90mm	2.5

Maximum stacking height of P72 Module Packing 26 pcs per box allow stacking of the same 26 pcs box, Plus 2 boxes per box 2pcs:

26 pcs single pallet dimension height:1145mm Weight:713KG

Height of 2 pallet stacking 2 pallet per box 2pcs: 2470mm Weight 1510KG

Packaging Method

Modules per box:26 pcs

Modules per 40 ft container: 624 pcs

* Installation depends on the mechanical load

Authorized Dealer

Registered Office :

Commercial Centre,
27 Hillier Street, Sheung Wan,
Hong Kong,Asia.

Contact : +91 7338821798
E-Mail : info@evvosolar.com
Skype : evvosolar

Manufacturing Unit :

Tien Son Industrial Zone,
Hoan Son Commune,
Tien Du District, Bac Ninh

E-Mail :
vietnam@evvosolar.com

Global Sales Office :

Sidco Industrial Estate,
Ambattur, Chennai - 600053
India.

Contact : +91 7338821798
E-Mail : sales@evvosolar.com
Skype : evvosolar

