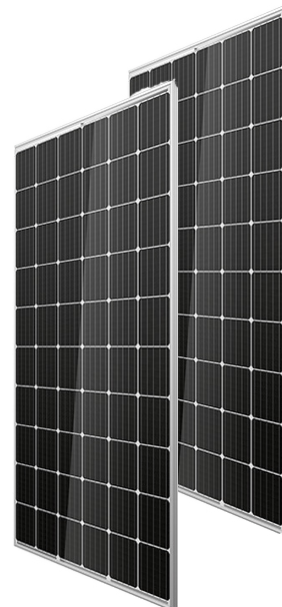


SAPPHIRE SOLAR GEM SERIES SS280-300M/60A MONOCRYSTALLINE MODULES



WE MAKE THINGS WORK THE WAY YOU WISH THEY WOULD.

- Premium PERC cell technology produces a high module efficiency
- Waterproof (IP67 rated) junction box
- Anti-UV backsheet for superior weather resistance and long-term durability
- 5-busbar technology for enhanced cell output
- Anti-reflective tempered glass coating to maximise light penetration
- 10 years product warranty
- 12 years @ 90% performance warranty
- 25 years @ 80% performance warranty



www.sapphire-solar.com
info@sapphire-solar.com

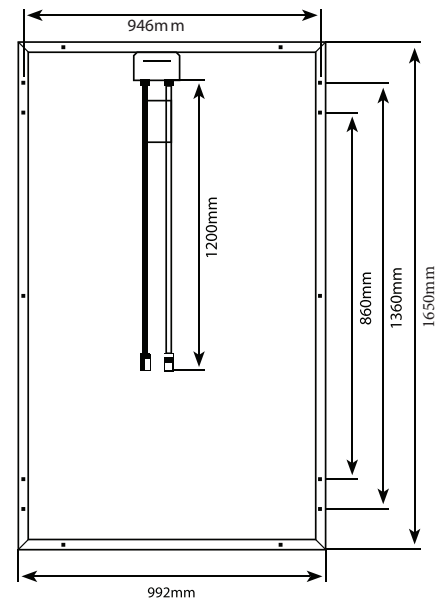


SPECIFICATIONS

ELECTRICAL CHARACTERISTICS		SS280M/60A	SS285M/60A	SS290M/60A	SS295M/60A	SS300M/60A
Rated Power at STC (PmPP)	W	280	285	290	295	300
Power Tolerance	W	0/+5	0/+5	0/+5	0/+5	0/+5
Maximum Power at STC	W	283	288	293	298	303
Cell Efficiency	%	20.0-20.2	20.3-20.5	20.6-20.8	20.9-21.1	21.2-21.4
Minimum Module Efficiency (%)	%	17.1	17.4	17.7	18.0	18.3
Maximum Rated Power Voltage (Vmpp)	V	31.5	31.6	31.7	32.2	32.6
Maximum Rated Power Current (Impp)	A	8.89	9.02	9.15	9.17	9.21
Open Circuit Voltage (Voc)	V	39.4	39.6	39.8	39.8	39.9
Short Circuit Current	A	9.41	9.48	9.55	9.59	9.65
Maximum System Voltage	V	1000	1000	1000	1000	1000
Maximum Series Fuse Rating	A	20A	20A	20A	20A	20A
Fire Rating		Class C	Class C	Class C	Class C	Class C

MECHANICAL CHARACTERISTICS

Solar Cells	Monocrystalline 156.75mmx156.75mm PERC (60 cells)
Dimensions	1650 x 992 x 35mm
Weight	19.0kg
Front Glass	3.2mm tempered, antireflective glass
Frame	Anodized/electrophoretic aluminium alloy
Cables	4.0mm ² , symmetrical lengths 1.2m
Connector	Genuine MC4
Junction Box	IP67 rated fully sealed



TEMPERATURE CHARACTERISTICS

Temperature Coefficient Pmax	-0.40%/°C
Temperature Coefficient Voc	-0.34%/°C
Temperature Coefficient Isc	+0.06%/°C
Operating temperature	-40°C ~+85°C
NOCT (Nominal Operation Cell Temperature)	45°C +/- 2°C

PACKAGING CONFIGURATION

Container	40" HQ
Pieces per Pallet	30
Pallets per Container	28
Pieces per Container	840



Proudly 100% Australian-owned company, modules manufactured in China with premium componentry, assembly and testing.