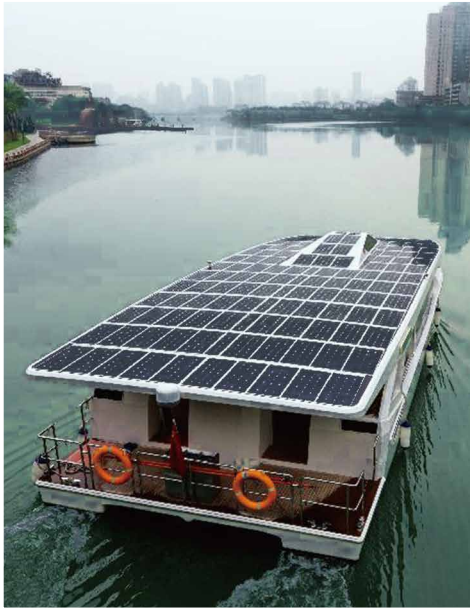


LUCIS SERIES

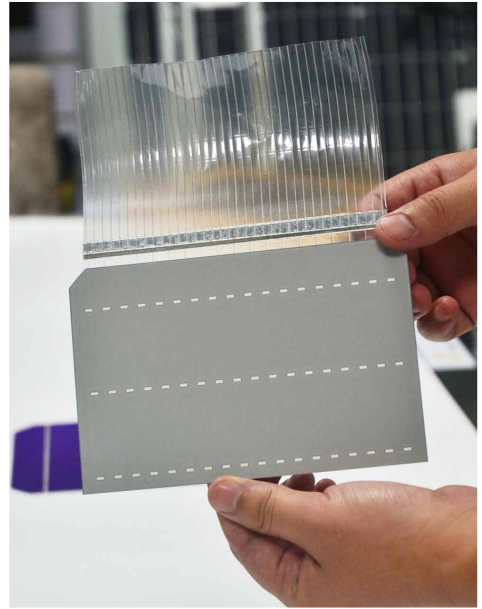
DAY4 TECH FLEXIBLE SOLAR PANEL LUCIS SERIES



IBC Solar cell technique , Micro-crack management.
The Day4 Solar Cells which have High Efficiency(19%),
the Mono-Crystalline Super Rugged cells are sandwiched
by to metallic grids, which provide optimal support
on both sides.



Application



Solar cells

The Day4 Tech flexible panel looks very similar to the current flexible panels, but uses two fine wire meshes to connect the individual solar cells together, one mesh on each side. They replace the bulky silver contacts, seen on regular panels. While bending these panels, may still break some of these contacts, the panel's power output is usually not affected, as many more contacts remain.



- ⌘ More advanced technology, absorb more light
- ⌘ Homogeneous look
- ⌘ Immune to micro crack and breakage
- ⌘ Maximum system voltage reaches 100DV
- ⌘ Low light performance
- ⌘ Better heat dissipation
- ⌘ Protection in Harsh environment

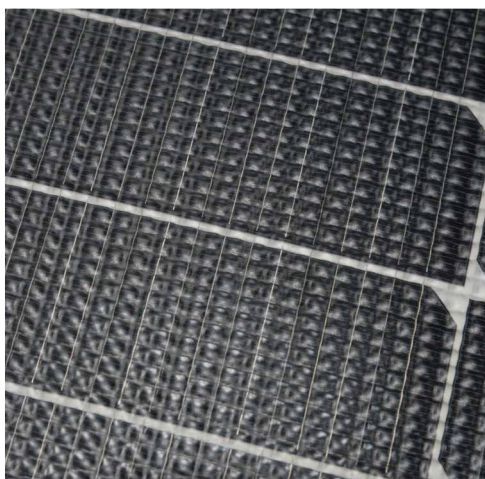


APPLICATION

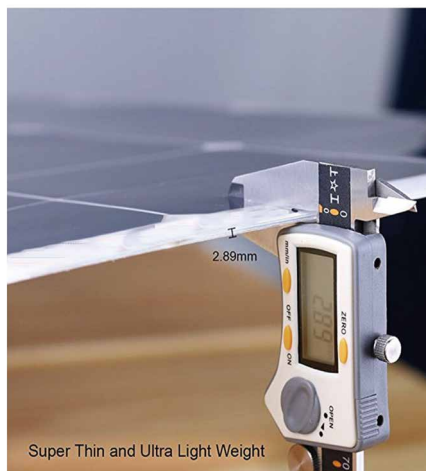


It is designed for 12v battery charging and for harsh environments where weight is a premium.

Suit for the place where will be fixed has a slight curve, ideal for Marine buoys, boat decks, camper vans etc.



ETFE Surface



Thickness

Specifications

Model	Luics 50w B	Luics 80w B	Luics 100w B	Luics 160w B
Operating voltage(Vmp)	17.2	17.2	17.2	17.7
Current(Imp)	2.94	4.65	5.89	9.06
Open circuit voltage(Voc)	20.4	20.4	20.4	20.6
Short-circuit current(ISC)	3.12	4.92	6.24	9.60
Cell Efficiency (%)	20.30%	20.30%	20.40%	20.40%
Component Model	100VDC(IEC)			
Operating voltage(Vmp)	-10 ~+60 °C			
Temperature Coefficient of Pmax	-0.393%/ °C			
Temperature Coefficient of Voc	-0.30%			
Temperature Coefficient of ISC	+0.039%/ °C			
Nominal Operating Cell Temperature	45+/-2 °C			

Mechanical Characteristics

Solar cell brand	A Grade Solar cells			
Maximum power	50W17V	80w17v	100w17v	160w18v
No.of cells	32(4x8)	32(4x8)	32(4x8)	32(4x8)
Component Size	520*670*3mm	720*670*3mm	940*670*3mm	1360*670*3mm
Weight	1.2kg	1.7kg	2.1kg	3.0kg
Maximum curvature	20mm	40mm	70mm	150mm
Warranty	1 years and service life of 10 years			
Junction Box	IP65/IP67			
Connectors	MC4 Compatible			
Contruccion	ETFE /TPT surface			