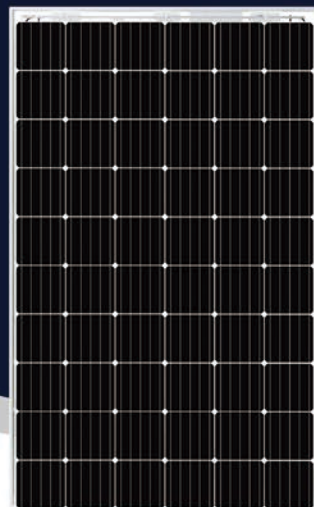


About Nanjing Lvchen New Energy Co., Ltd.

www.lvchensolar.com

Nanjing Lvchen New Energy Co., Ltd. is a world-renowned manufacturer of photovoltaic modules located and headquartered in Nanjing, Jiangsu province. Products range from 100w-370w at different series of high quality mono & poly PV module to satisfy users' needs. Production plants were located in Nanjing and Suqian areas. We insist on providing open and transparent BOM list and the core material are mainly from Public listed company, with higher standards of quality control and more perfect details handling to accomplish high-qualified solar modules.



TECHNICAL ADVANTAGES

1 | Strictly Referring to the Materials of First-class Brands and Provide Transparent BOM List



Tempered Glass: Avic Sanxin Co., Ltd.
(stock code 002163, Q CELLS, JA Solar, Trina Solar and other brand suppliers)

EVA: Hanzhou First Applied Material Co. Ltd.
(stock code 603806, Q CELLS, LonGi Solar, Trina Solar and other brand suppliers)

Solar Cells: Tongwei Solar Co., Ltd.
(stock code 600438, solar cell shipment ranking NO.1 among China suppliers in 2017)

EVA

Backsheet: Jolywood Sunwatt Co., Ltd.
(stock code 300393, Q CELLS, LonGi Solar, JA Solar and other brand suppliers)

Sealant: Suzhou Tianshan New Material Technology Co., Ltd.
(High global market occupation)

Isolation Strip: Jolywood Sunwatt Co., Ltd.
(stock code 300393, Q CELLS, LonGi Solar, JA Solar and other brand suppliers)

MC4/ Junction Box: Zhejiang Renhe Photovoltaic Technology Co., Ltd.
(Occupying around 25% of global market)

2 | Full Automatic Assembly Production Line and Strict Quality Control

3 | Quality equals to Hanwha Q CELLS, JA Solar and Trina Solar

4 | The price is 5% lower than that of brand PV modules

LVCHEN SOLAR

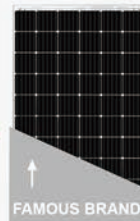
Q CELLS

JA SOLAR

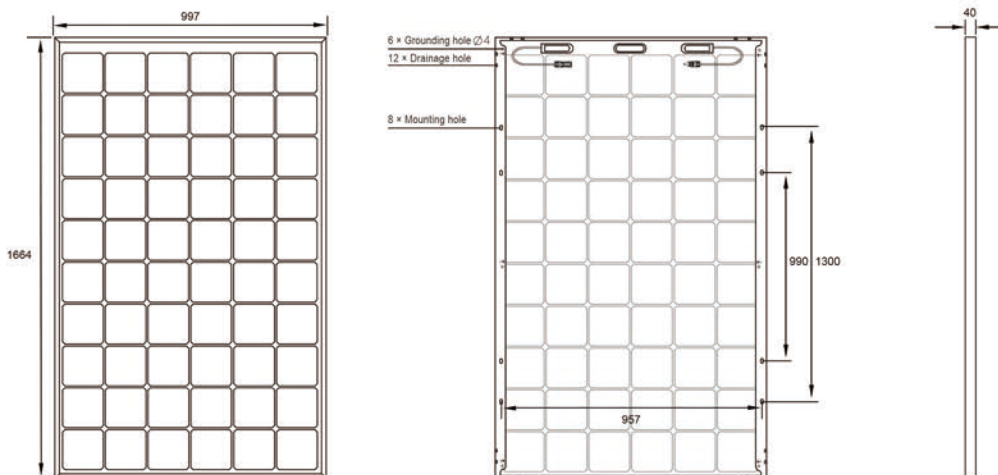
TrinaSolar



SAME QUALITY
PRICE LOWER 5%



ENGINEERING DRAWING (UNITE: MM)



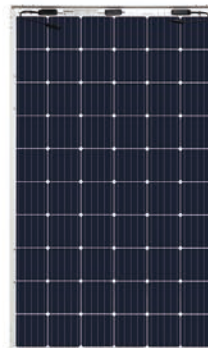
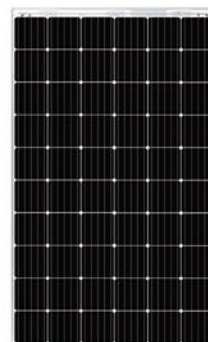
MECHANICAL SPECIFICATION

Solar Cell Type	Monocrystalline	Connector	MC4 or intermateable connector with MC4
Solar Cell Layout	60 (6*10)	Weight	22.5kg±5%
Junction Box	IP67	Format	1664*997*40mm(including frame)
Cable	4mm ² (±) ≥ 300mm	Package	26pcs per pallet

ELECTRICAL CHARACTERISTICS AT STANDARD TEST CONDITIONS, STC

Model	LC-MPB300		LC-MPB305	
	Front	Back	Front	Back
Test conditions	Front	Back	Front	Back
Power at MPP (Pmax / W)	300	226	305	229
Open Circuit Voltage (Voc / V)	39.6	39.3	39.8	39.5
Short Circuit Current (Isc / A)	9.58	7.33	9.69	7.42
Voltage at MPP (Vmp / V)	32.9	33.7	33.1	33.8
Current at MPP (Imp / A)	9.11	6.71	9.22	6.77
Efficiency (%)	18.1	13.6	18.4	13.8
Module Tolerance Range	±3%	±3%	±3%	±3%
Standard Test Conditions (STC)	1000W/m ² , 25°C, spectrum AM 1.5G			

PRODUCT DISPLAY



MINIMUM PERFORMANCE AT NORMAL OPERATING CONDITIONS, NOC

Permitted Module Temperature	-40°C ~ +85°C
Maxium System Voltage	1500V
Maxium Reverse Current	20A
Normal Operating Cell Temperature	45 ± 2°C
Module Application Class	Class A

TEMPERATURE COEFFICIENTS TEST (STC)

Short Circuit Current (Isc)	+0.059%/°C
Open Circuit Voltage (Voc)	-0.300%/°C
Power at MPP (Pmax)	-0.410%/°C