

PROPERTIES

Thermal photovoltaic module for the production of electricity, sanitary water and heating.

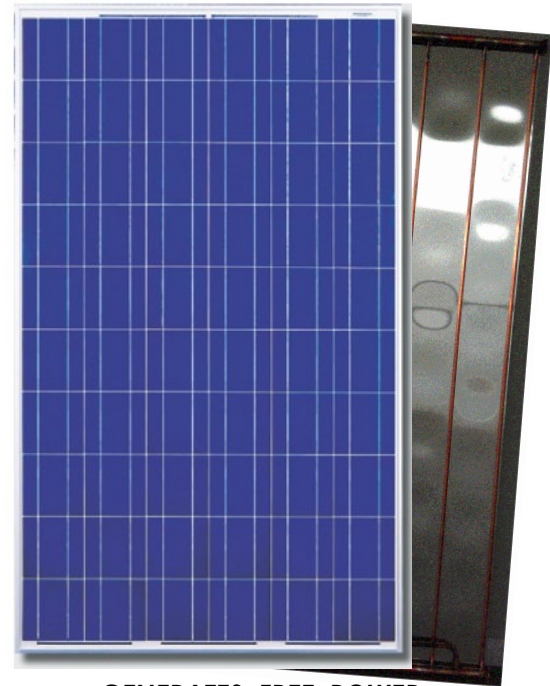
WARRANTY

Performance:
12 years (93% of nominal output power)
25 years (85% of nominal output power)

Product:
12 years (production defect)

STRUCTURAL PROPERTIES

Size LxWxH	1663x998x45 mm
Cells type	60 polycrystalline silicon cells with high efficiency
Cells dimensions	156x156mm
Front Glass	Prismatic tempered glass high light transmittance, 3,6mm thickness, class U1
Application Class	A, safety class I
Frame	Aluminium alloy EN AW-6060T6 anodized 15 microns, thickness 4,5 cm

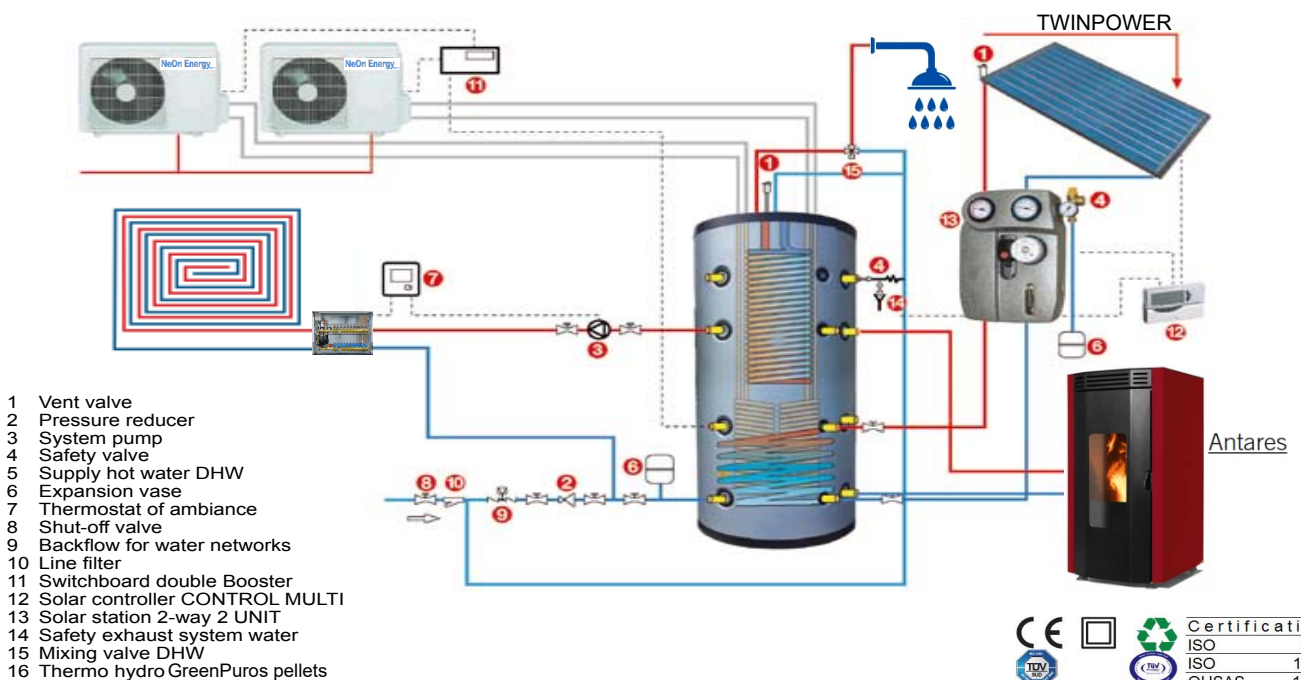


**GENERATES FREE POWER
 &
 HOT WATER ALL IN ONE**

CERTIFICATES

Modules are certified according to: IEC 61215: 2005
 Modules are certified according to: IEC 61730-1 ; IEC 61730-2:2004 + A1:2001
 MADE IN EU

EXAMPLES OF APPLICATIONS POWER AND DHW



THERMAL FUNCTIONAL PARAMETERS

Instant efficiency absorber area	η_0	0,580
Coefficient of linear thermal dispersion	α_1	7,500W/(m ² °K)
Thermal coefficient	α_2	0,012W/(m ² °K ²)
Angle of incidence 50°, reduced optical efficiency	$k\theta(50^\circ)$	94%
Thermal peak power		890W
Load loss		50 mbar
Maximum operating temperature		80°C
Maximum working pressure		6 bar
Minimum recommended flow		7 lt/m
Weight empty module		21 Kg
Module fluid volume		1 lt
Total Area		1,66 m ²
Open area		1,60 m ²
Absorption area		1,60 m ²
Tubing diameter for connection	\varnothing	10 x, 1 mm
Reference standard		UNI EN 12975-2:2006

ELECTRICAL PARAMETERS

Peak output Pm (W)	250W
Tolerance (%)	-0+5
MPP voltage Vm (V)	30,03
MPP current Im (A)	8,33
Open Circuit voltage Voc (V)	37,68
Closed circuit voltage Isc (A)	8,81
Max. system voltage (VDC)	1000
Module efficiency (%)	15,06%
Max surface load	4500N/m ²
Insulation resistance	>100M Ω

OPERATING CHARACTERISTICS

		U.M.
Voltage Temperature Coefficient (Voc)	- 128,4	mV/°C
Power temperature Coefficient (Pmp)	- 1,01	W/°C
Current Temperature Coefficient (Isc)	+ 4,93	mA/°C
NOCT (Nominal Operating Cell Temperature)	46	°C
Working temperature range		-40°C ~ +85°C

TECHNICAL DRAWING

The information shown in the sheet may change without notice as the result of technical updating.

