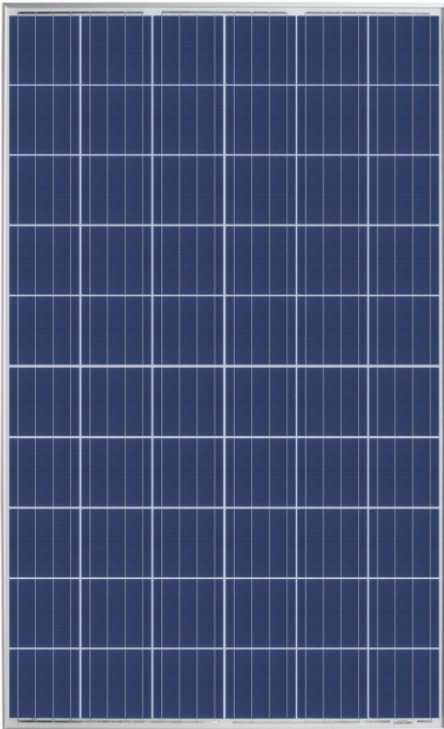
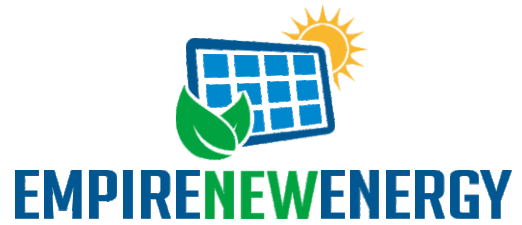
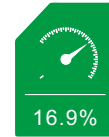


EMP-60P1-4- (255-275)W
POWER OUTPUT RANGE

255-275



POWER TOLERANCE



MAXIMUM EFFICIENCY



Certied to withstand the most challenging environmental conditions

- 2400 Pa wind load
- 5400 Pa snow load
- 35 mm hail stones at 97 km/h



- PID resistant and free of snail trails
- Increased module robustness to minimize micro-cracks



Pass class A fire test



25 Year Linear Power Warranty

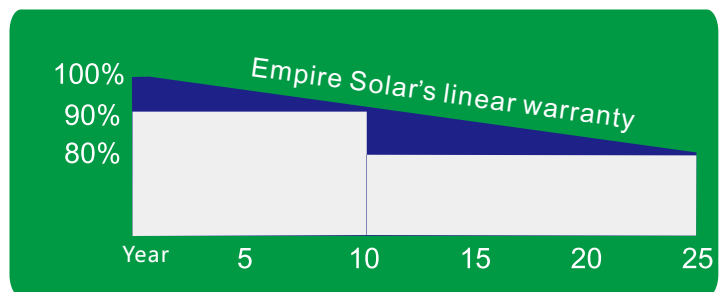
Comprehensive Products And System Certicates

IEC61215/IEC61730/UL1703/IEC61701/IEC62716
ISO 9001: Quality Management System
ISO 14001: Environmental Management System
OHSAS 18001: Occupation Health and Safety Management System



LINEAR PERFORMANCE WARRANTY

10 Year Product Warranty · 25 Year Linear Power Warranty





EMP-60P1-4- (255-275)W

ELECTRICAL DATA (STC)

Peak Power Watts-PMAX (Wp)	255	260	265	270	275
Power Output Tolerance-PMAX (W)	0-+5				
Maximum Power Voltage-VMPP (V)	30.29V	30.63V	30.96V	31.26V	31.46V
Maximum Power Current-IMPP (A)	8.42A	8.49A	8.56A	8.64A	8.74A
Open Circuit Voltage-VOC (V)	37.82V	37.98V	38.14V	38.31V	38.50V
Short Circuit Current-ISC (A)	8.98A	9.04A	9.10A	9.15A	9.24A
Module Efficiency (%)	15.67%	15.98%	16.29%	16.60%	16.90%

STC: Irradiance 1000W/m², Cell Temperature 25°C, Air Mass AM1.5.

MECHANICAL DATA

Solar Cells	Multicrystalline 156.75 × 156.75 mm (6 inches)
Cell Orientation	60 cells (6 × 10)
Module Dimensions	1640 × 992 × 35mm
Weight	18.2kg
Glass	3.2 mm (0.13 inches), High Transmission, AR Coated Tempered Glass
Backsheet	White
Frame	Silver Anodized Aluminium Alloy
J-Box	IP 65 or IP 67 rated
Cables	Photovoltaic Technology Cable 4.0mm (0.006 inches)
Connector	Mc4

TEMPERATURE RATINGS

NOCT (Nominal Operating Cell Temperature)	45°C (±2°C)
Temperature Coecient of Pmax	-0.410%/°C
Temperature Coecient of Voc	-0.330%/°C
Temperature Coecient of Isc	0.058%/°C

MAXIMUM RATINGS

Operational Temperature	-40+85°C
Maximum System Voltage	1000VDC (IEC)
Max Series Fuse Rating	15A

(DO NOT connect Fuse in Combiner Box with two or more strings in parallel connection)

WARRANTY

10 year Product Workmanship Warranty
25 year Linear Power Warranty

PACKAGING CONFIGURATION

Modules per box: 30 pieces
Modules per 40'container: 840 pieces

