

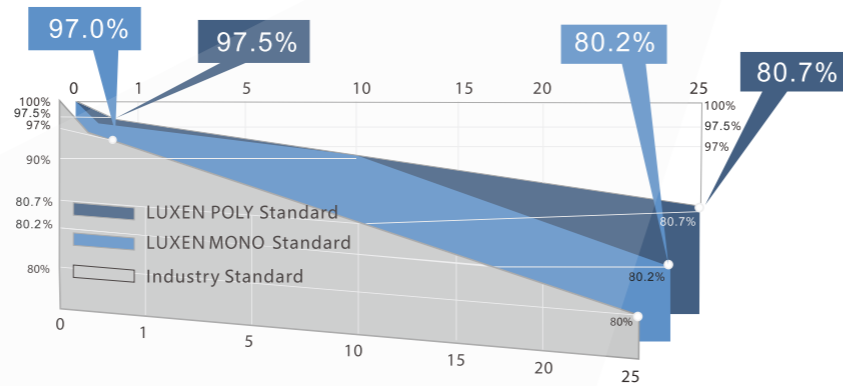
# LUXMAX<sup>®</sup> Plus

LUXMAX<sup>®</sup> Plus series superhigh efficiency modules adopt advanced PERC technology (Passivated Emmitter Rear Contact technology). Its higher conversion efficiency and better anti-PID performance bring installers the maximize power yield per unit area. They can meet your very strict requirement on quality and efficiency of modules.

## 60 cells Bigger PERC Cell



## LINEAR PERFORMANCE WARRANTY



ISO9001:2015 management systems



IEC61215 & IEC61730 standard quality



Smaller electric current, less CTM loss  
Lower risk of hot spot



Wind load up to 3800Pa  
Snow load up to 5400Pa



0-5W positive power sorting



Stable performance under weak light conditions



25-year power warranty  
10-year product warranty



# LUXEN

## MONO

### STC

	LNSE-305M	LNSE-310M	LNSE-315M	LNSE-320M	LNSE-325M
Maximum Power (Pmax)	305W	310W	315W	320W	325W
Open Circuit Voltage (Voc)	39.48V	39.80V	40.12V	40.43V	40.74V
Short Circuit Current (Isc)	9.98A	10.05A	10.12A	10.19A	10.26A
Voltage at Maximum Power (Vmpp)	32.28V	32.56V	32.85V	33.13V	33.40V
Current at Maximum Power (Impp)	9.45A	9.52A	9.59A	9.66A	9.73A
Module Efficiency(%)	18.47%	18.77%	19.08%	19.38%	19.68%

## POLY

### STC

	LNSE-275P	LNSE-280P	LNSE-285P	LNSE-290P	LNSE-295P
Maximum Power (Pmax)	275W	280W	285W	290W	295W
Open Circuit Voltage (Voc)	38.27V	39.57V	38.84V	39.14V	39.41V
Short Circuit Current (Isc)	9.37A	9.45A	9.54A	9.62A	9.71A
Voltage at Maximum Power (Vmpp)	30.88V	31.15V	31.39V	31.66V	31.90V
Current at Maximum Power (Impp)	8.91A	8.99A	9.08A	9.16A	9.25A
Module Efficiency(%)	16.65%	16.96%	17.26%	17.56%	17.86%

## Packing Configuration

Container	20'GP	40'GP
Pieces per pallet	30	30
Pallets per container	12	28
Pieces per container	360	840

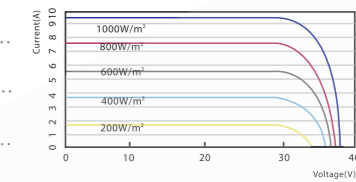
## Mechanical Characteristics

Solar Cell	Mono/Poly
No. of Cells	60(6×10)
Dimensions	1658x996x35mm
Weight	19.5 kgs
Front	Glass 3.2mm tempered glass
Frame	Anodized aluminium alloy
Junction Box	IP67/IP68 rated(3 by pass diodes)
Output Cables	4.0mm <sup>2</sup> , symmetrical length (-)900mm and (+)900mm
Connectors	MC4 compatible
Mechanical load test	5400Pa

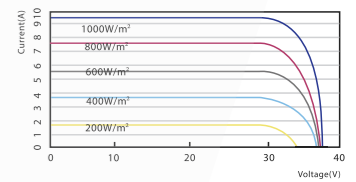
# 60 cells

# LUXEN

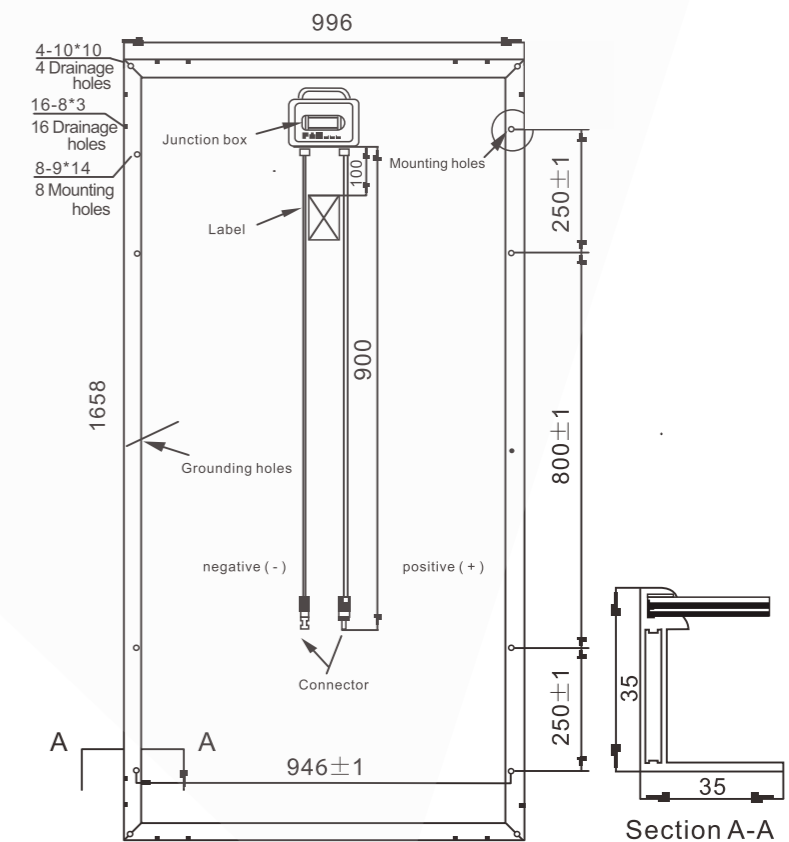
## LNSE-275P/I-V



## LNSE-310M/I-V



Operating Module Temperature	-40°C to +85°C
Maximum System Voltage	1500V DC(IEC) 1000V DC(UL)
Maximum Series Fuse Rating	20A
Power Tolerance	0/+5W
<b>Temperature Characteristics</b>	
Nominal Operating Cell Temperature (Noct)	45±2°C
Temperature Coefficient of Pmax	-0.36%/°C
Temperature Coefficient of Voc	-0.29%/°C
Temperature Coefficient of Isc	0.05%/°C



LUXEN SOLAR ENERGY CO., LTD  
T:+86 512 6708 1572  
F:+86 512 6708 1570  
sales@luxensolar.com  
www.luxensolar.com

