



GSUN-XXX-6MB: Maximum System Voltage 1000 VDC.
GSUN-XXX-6MB-HV: Maximum System Voltage 1500 VDC.

GSUN-6MB(-HV)-(300-320) SERIES 6 INCH 60 CELLS

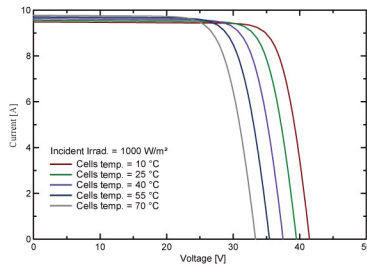
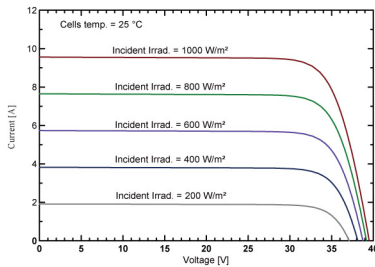
Electrical Characteristics

Module Type	GSUN-300-6MB GSUN-300-6MB-HV		GSUN-310-6MB GSUN-310-6MB-HV		GSUN-315-6MB GSUN-315-6MB-HV		GSUN-320-6MB GSUN-320-6MB-HV	
	STC	NOCT	STC	NOCT	STC	NOCT	STC	NOCT
Maximum Power $-P_{mp}$ (W)	300	223	310	230	315	234	320	238
Open Circuit Voltage $-V_{oc}$ (V)	39.7	36.7	40.2	37.1	40.4	37.3	40.6	37.5
Short Circuit Current $-I_{sc}$ (A)	9.65	7.82	9.82	7.96	9.92	8.05	10.02	8.14
Maximum Power Voltage $-V_{mp}$ (V)	32.1	30.3	32.6	30.7	32.8	30.9	33.0	31.2
Maximum Power Current $-I_{mp}$ (A)	9.35	7.36	9.51	7.50	9.61	7.58	9.70	7.64
Module Efficiency STC- η_m (%)	18.44		19.05/18.94		19.36/19.24		19.67/19.55	
Power Tolerance (W)	(0,+4.99)							
Maximum System Voltage (V)	1000VDC / 1500VDC							
Maximum Series Fuse Rating (A)	20A							
Pmax Temperature Coefficient	-0.36%/°C							
Voc Temperature Coefficient	-0.28 %/°C							
Isc Temperature Coefficient	+0.05 %/°C							
Operating Temperature	-40~+85 °C							
Nominal Operating Cell Temperature	45±2 °C							
Fire Rating	Class C							

STC: Irradiance 1000 W/m² module temperature 25°C AM=1.5

NOCT: Irradiance 800 W/m² ambient temperature 20°C wind speed :1m/s Power measurement tolerance: +/-3%

I-V Curve



Mechanical Specifications

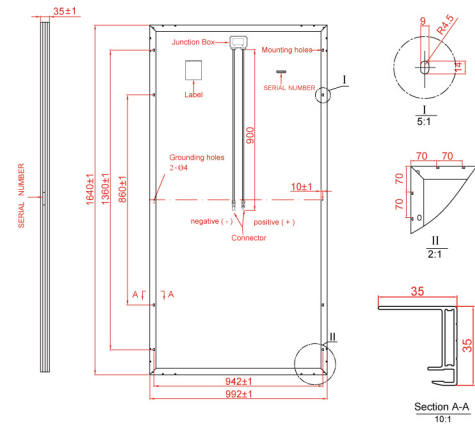
External Dimension	1640 x 992 x 35mm/1650 x 992 x 35mm
Weight	17.5kg/18.0kg
Solar Cells	PERC Mono crystalline 156.75 x 156.75 mm (60pcs)
Front Glass	3.2 mm AR coating tempered glass, low iron
Frame	Anodized aluminium alloy
Junction Box	IP68, 3 diodes
Output Cables	4.0 mm ² , cable length:900 mm
Connector	TT01;PV-KST4/xy-UR;PV-KBT4/xy-UR;
Mechanical Load	5400 Pa

Packing Configuration

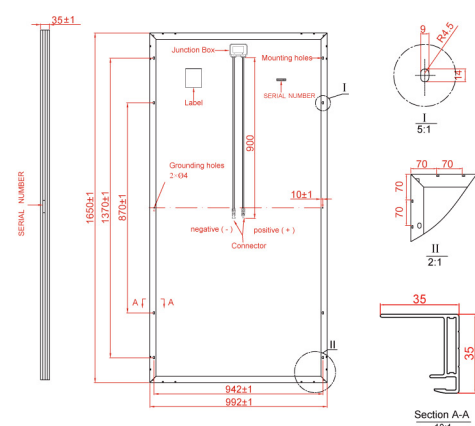
External Dimension	1640 x 992 x 35mm/1650 x 992 x 35mm		
Container	20'GP	40'GP	40'HQ
Pieces per Pallet	30	30	30+2*
Pallets per Container	12	28	28
Pieces per Container	360	840	896

* 30+2 pieces per pallet is the special package which only suits for container transport.For details,please consult GSUN.

Technical drawing(GSUN-XXX-6MB)



Technical drawing(GSUN-XXX-6MB-HV)



* All Dimensions in mm.

* The above drawing is a graphical representation of the product.
For engineering quality drawings please contact GSUN.