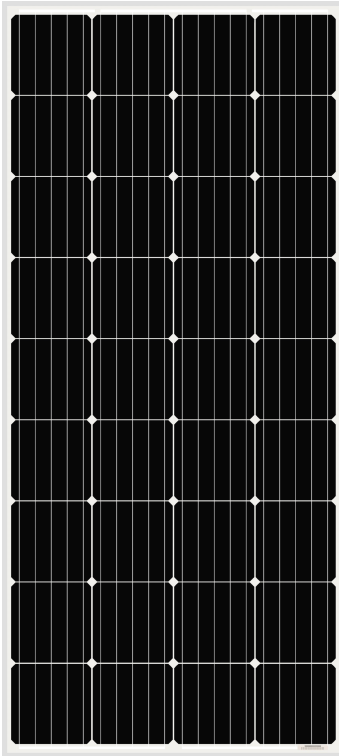




AS-6M18

MONOCRYSTALLINE MODULE



Passionately
committed to
delivering innovative
energy solution

ADVANCED PERFORMANCE & PROVEN ADVANTAGES

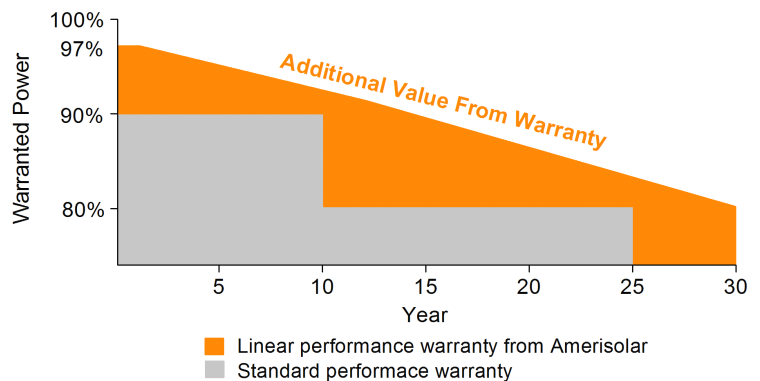
- High module conversion efficiency up to 18.66% by using high efficient solar cells and advanced manufacturing technology.
- Low degradation and excellent performance under high temperature and low light conditions.
- Robust aluminum frame ensures the modules to withstand wind loads up to 2400Pa and snow loads up to 5400Pa.
- High reliability against extreme environmental conditions (passing salt mist, ammonia and hail tests).
- Potential induced degradation (PID) resistance.
- Positive power tolerance of 0 ~ +3 %.

CERTIFICATIONS

- IEC61215, IEC61730, IEC62716, IEC61701, CE, CQC, CGC, ETL(USA), JET(Japan), J-PEC(Japan), Kemco(South Korea), KS(South Korea), MCS(UK), CEC(Australia), FSEC(FL-USA), CSI Eligible(CA-USA), Israel Electric(Israel), InMetro(Brazil), TSE(Turkey)
- ISO9001:2015: Quality management system
- ISO14001:2015: Environmental management system
- OHSAS18001:2007: Occupational health and safety management system

SPECIAL WARRANTY

- 12 years limited product warranty.
- Limited linear power warranty: 12 years 91.2% of the nominal power output, 30 years 80.6% of the nominal power output.



ELECTRICAL CHARACTERISTICS AT STC

| | | | | | | |
|---------------------------------------|---|-------|-------|-------|-------|-------|
| Nominal Power (P_{max}) | 160W | 165W | 170W | 175W | 180W | 185W |
| Open Circuit Voltage (V_{OC}) | 23.2V | 23.4V | 23.6V | 23.8V | 24.0V | 24.2V |
| Short Circuit Current (I_{SC}) | 8.98A | 9.15A | 9.31A | 9.48A | 9.65A | 9.82A |
| Voltage at Nominal Power (V_{mp}) | 18.8V | 19.0V | 19.2V | 19.4V | 19.6V | 19.8V |
| Current at Nominal Power (I_{mp}) | 8.52A | 8.69A | 8.86A | 9.03A | 9.19A | 9.35A |
| Module Efficiency (%) | 16.14 | 16.64 | 17.14 | 17.65 | 18.15 | 18.66 |
| Operating Temperature | -40°C to +85°C | | | | | |
| Maximum System Voltage | 1000V DC | | | | | |
| Fire Resistance Rating | Type 1(in accordance with UL1703)/Class C(IEC61730) | | | | | |
| Maximum Series Fuse Rating | 15A | | | | | |

STC: Irradiance 1000W/m², Cell temperature 25°C, AM1.5

ELECTRICAL CHARACTERISTICS AT NOCT

| | | | | | | |
|---------------------------------------|-------|-------|-------|-------|-------|-------|
| Nominal Power (P_{max}) | 118W | 122W | 126W | 130W | 133W | 137W |
| Open Circuit Voltage (V_{OC}) | 21.4V | 21.6V | 21.8V | 22.0V | 22.2V | 22.4V |
| Short Circuit Current (I_{SC}) | 7.27A | 7.41A | 7.54A | 7.68A | 7.82A | 7.95A |
| Voltage at Nominal Power (V_{mp}) | 17.1V | 17.3V | 17.5V | 17.7V | 17.9V | 18.1V |
| Current at Nominal Power (I_{mp}) | 6.90A | 7.06A | 7.20A | 7.35A | 7.43A | 7.57A |

NOCT: Irradiance 800W/m², Ambient temperature 20°C, Wind Speed 1 m/s

MECHANICAL CHARACTERISTICS

| | |
|-------------------|---|
| Cell type | Monocrystalline 156x156mm (6x6inches) |
| Number of cells | 36 (4x9) |
| Module dimensions | 1480x670x35mm (58.27x26.38x1.38inches) |
| Weight | 12kg (26.5lbs) |
| Front cover | 3.2mm (0.13inches) tempered glass with AR coating |
| Frame | Anodized aluminum alloy |
| Junction box | IP65, 2 diodes |
| Cable | 4mm ² (0.006inches ²), 900mm (35.43inches) |
| Connector | MC4 or MC4 compatible |

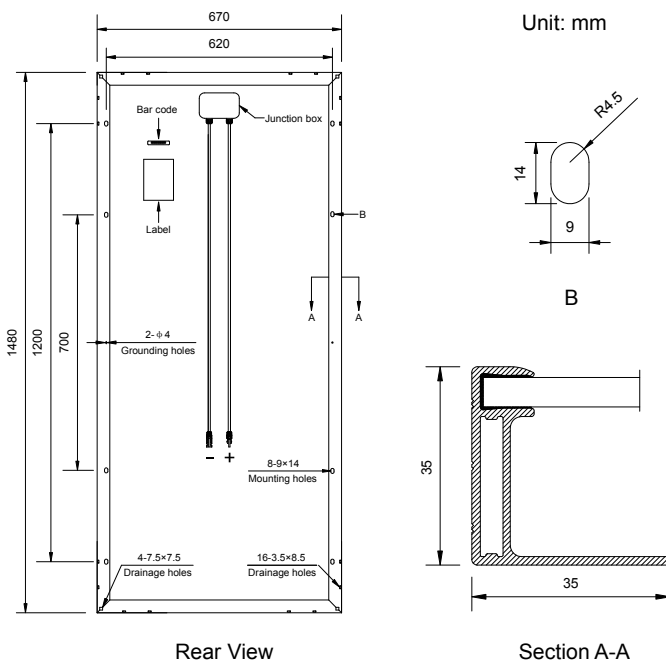
TEMPERATURE CHARACTERISTICS

| | |
|---|-----------|
| Nominal Operating Cell Temperature (NOCT) | 45°C±2°C |
| Temperature Coefficients of P_{max} | -0.38%/°C |
| Temperature Coefficients of V_{OC} | -0.29%/°C |
| Temperature Coefficients of I_{SC} | 0.052%/°C |

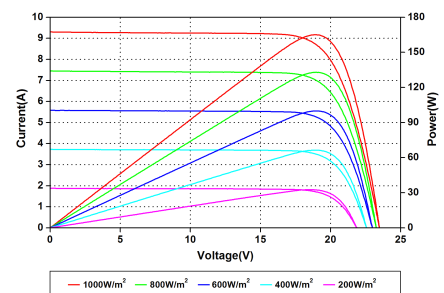
PACKAGING

| | |
|-----------------------------------|--------------|
| Standard packaging | 30pcs/pallet |
| Module quantity per 20' container | 518 pcs |
| Module quantity per 40' container | 1350 pcs |

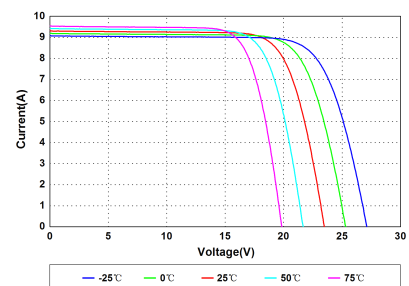
ENGINEERING DRAWINGS



IV CURVES



Current-Voltage and Power-Voltage Curves at Different Irradiances



Current-Voltage Curves at Different Temperatures

Specifications in this datasheet are subject to change without prior notice.