

2-Face MonoPower Basic

ASP M6-72 BF Series 350W-365W

Bifacial monocrystalline PV-module



QUALITY & RELIABILITY

Best raw materials, optimized production process and accurate testing makes the quality difference



GERMAN ENGINEERING

Best design by the art of German engineering



SAVE INVESTMENT

Product warranty of 12 years and performance warranty of 25 years



POSITIVE PERFORMANCE TOLERANCE

Up to +5 W plus-tolerance on output



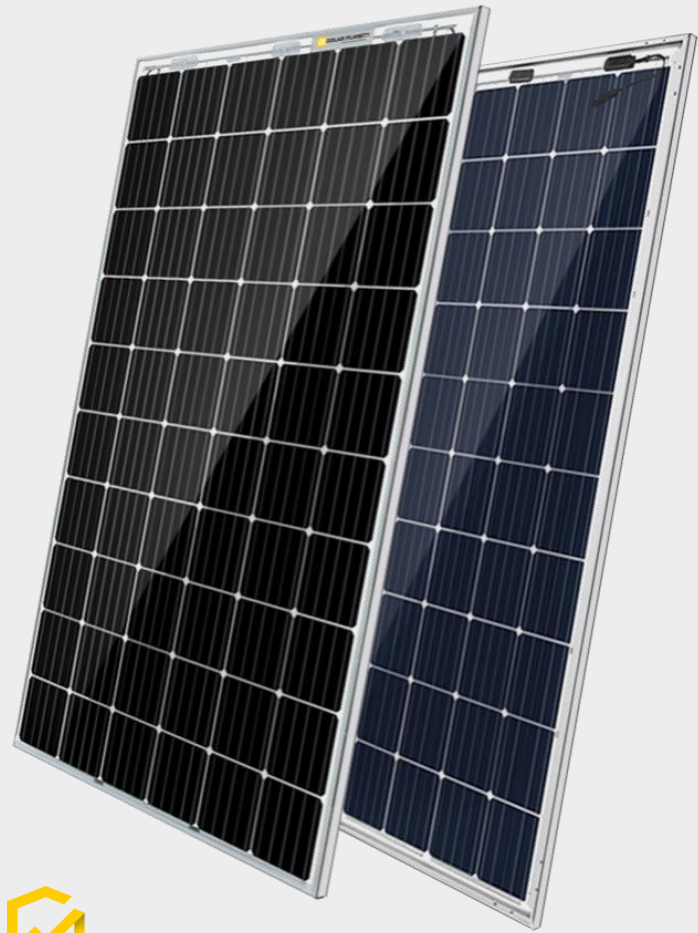
FOR ALL ENVIRONMENTAL CONDITIONS

Resistant against PID, sand, salt and ammonia



STABLE AND STRONG

Capable to bear heavy snow loads up to 5400 Pa and wind loads up to 2400 Pa



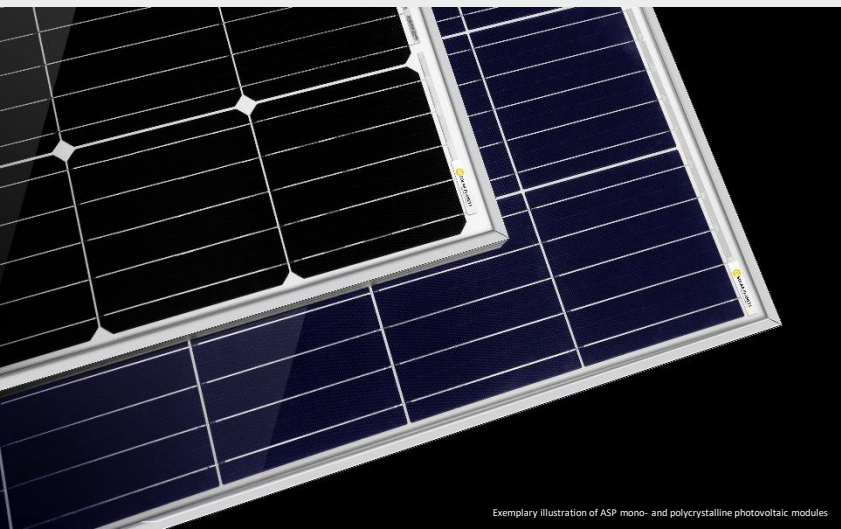
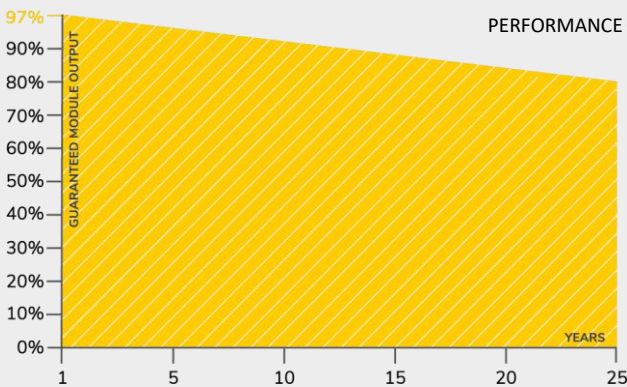
12 YEARS
PRODUCT WARRANTY

Exemplary illustration of ASP M6-60 BF

OUR PERFORMANCE GUARANTEE



25 YEARS
PERFORMANCE GUARANTEE



Exemplary illustration of ASP mono- and polycrystalline photovoltaic modules

CERTIFICATES



IEC 61215
IEC 61730
PERIODICAL
INCEPTION



PID RESISTANT
SALT MIST RESISTANT
SAND RESISTANT
CORROSIVE GAS (NH₃)



2-Face MonoPower Basic Module

ASP M6-72 BF Series 350W-365W

TECHNICAL DATA

		ASP350M6-72	ASP355M6-72	ASP360M6-72	ASP365M6-72
Maximum power	P _{max} (Wp)	350	355	360	365
Maximum power voltage	V _{mp} (V)	39,37	39,66	39,95	40,24
Maximum power current	I _{mp} (A)	8,89	8,95	9,01	9,07
Open-circuit voltage	V _{oc} (V)	46,49	46,82	47,14	47,45
Short-circuit current	I _{sc} (A)	9,65	9,72	9,79	9,86
Module efficiency	%	17,77	18,02	18,28	18,53
Power tolerance	P _{max} (W)		0 / +5		
Maximum system voltage DC	V		1500		
Operating temperature	°C		-40 to +85		
Temperature coefficients of P _{max}	%/°C		-0.44		
Temperature coefficients of V _{oc}	%/°C		-0.33		
Temperature coefficients of I _{sc}	%/°C		0.05		
Nominal operating cell temp. (NOCT)	°C		45 ± 2		

The electrical data apply to standard test conditions (STC): Irradiance of 1000 W/m² with spectrum AM 1.5 and a cell temperature of 25°C.

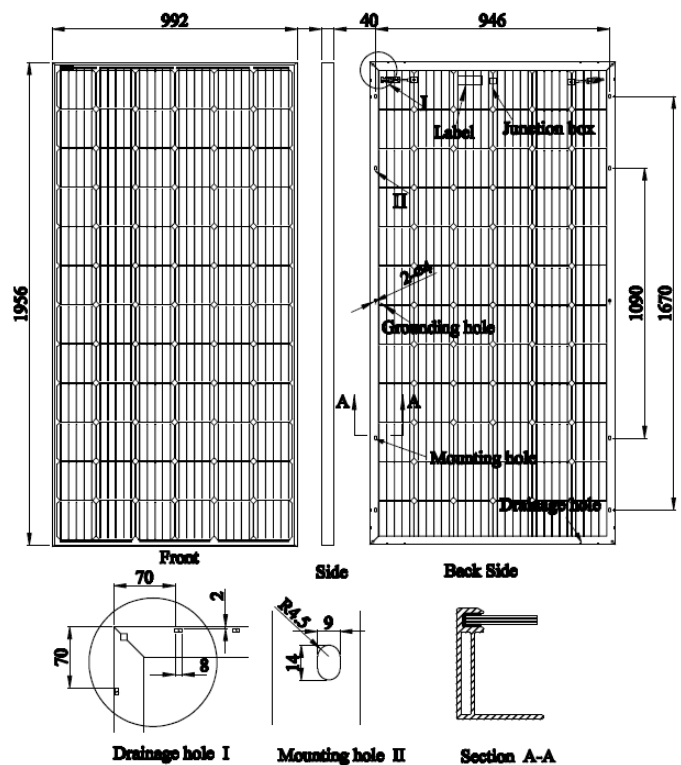
MATERIAL CHARACTERISTICS

Cell type	Bifacial monocrystalline 156.75 x 156.75 mm
No. of cells	72 (6 x 12)
Dimensions	1956 x 992 x 40 mm
Weight	28,3 kg
Junction box	IP 68 rated
Output cable	4.0 mm ² , 300 mm length
Connector type	QC 4. 10-35
Hail resistance	Max. Ø 25 mm, at 23 m/s
Wind load	2400 Pa / 244 kg / m ²
Mechanical load	5400 Pa / 550 kg / m ²

PACKING INFORMATION

Packing configuration	66 pcs / double pallet
Loading capacity	726 pcs / 40 HQ
Size / pallet	2035 x 1140 x 2264 mm
Weight	1980 kg / pallet

DRAWINGS



Alpha Solar Planet GmbH
Schwalbenweg 1 g, 86343 Königsbrunn

Tel.: +49 8231 99190 70
Fax: +49 8231 99190 89

E-mail: info@a-s-p.solar
Web: www.a-s-p.solar

