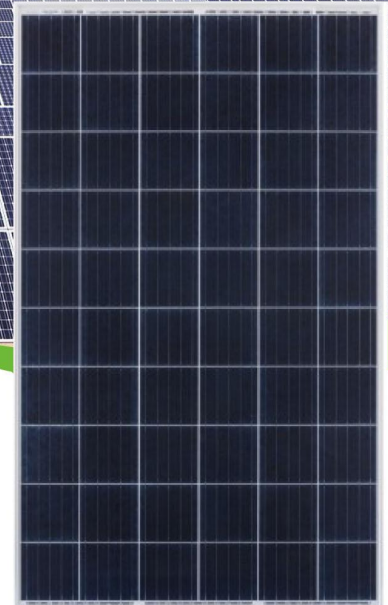




Enjoy Sunshine Enjoy Life



POLYCRYSTALLINE SOLAR MODULE

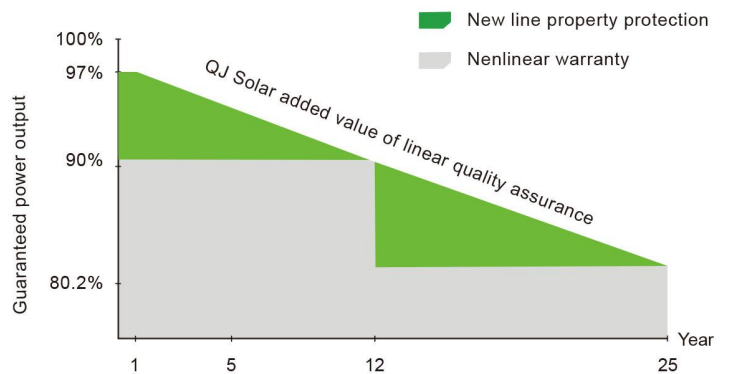
POLYCRYSTALLINE 60-CELL SERIES

The solar panel characteristics

- 1500 Voltage**
1500V system voltage design, compared with 1000V system greatly reduces BOS cost.
- 5BB**
More uniform current collection ability, reduce the current heat loss of the battery inside the module; Beautiful appearance, more suitable for roof installation.
- PID Resistant**
Tested in accordance to the draft standard IEC 62804, our PV modules have demonstrated resistance against PID(Potential Induced Degradation), which translates to security for your investment.
- Low light performance**
Through the use of excellent glass and battery surface velvet technology to achieve low light environm ent excellent performance.
- Load Capacity**
The whole assembly has been certified with wind load of 2400Pa and snow load of 5400Pa, pass extra 8000Pa snow resistance.
- Customizable**
Solar panels can be customized as your requirements.

QJ Solar linear warranty

- 10 YEAR** 10 Years Limited Product Warranty
- 25 YEAR** 25 Years Performance Warranty



POLYCRYSTALLINE 60-CELL SERIES



ELECTRICAL PERFORMANCE

Module Type		QJP260	QJP265	QJP270	QJP275	QJP280	QJP285	QJP290
		-60	-60	-60	-60	-60	-60	-60
Power output	P_{max} Wp	260	265	270	275	280	285	290
Power output tolerance	ΔP_{max} W	0 + 3						
Voltage at Pmax	V_{mpp} V	30.9	31.2	31.4	31.55	31.74	31.98	32.2
Current at Pmax	I_{mpp} A	8.42	8.5	8.6	8.72	8.83	8.92	9.01
Open-circuit voltage	V_{oc} V	37.7	38.07	38.3	38.5	38.73	39.02	39.28
Short-circuit current	I_{sc} A	9.01	9.09	9.21	9.34	9.45	9.55	9.64
Module Efficiency	Eff. %	16.00	16.29	16.60	16.90	17.21	17.51	17.82

TEMPERATURE & MAXIMUM RATINGS

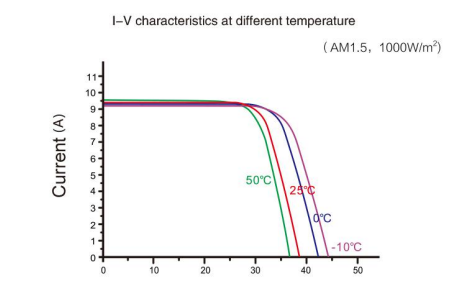
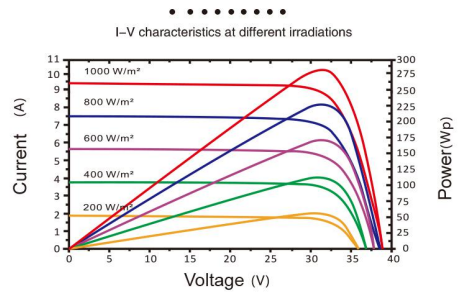
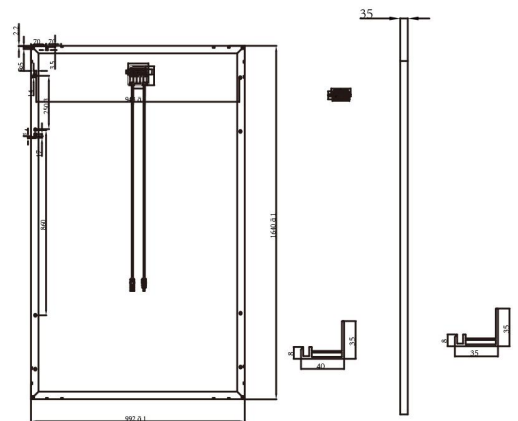
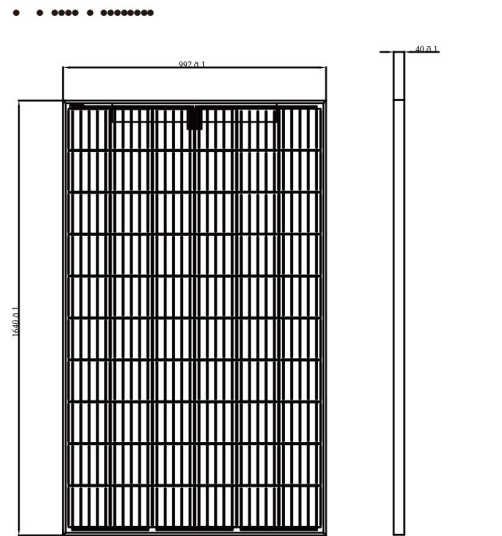
Temperature coefficient of Pmax	-0.40%/C
Temperature coefficient of Voc	-0.30 %/C
Temperature coefficient of Isc	0.06 %/C
Operational Temperature	-45C ~+85C
Maximum System Voltage	1000/1500VDC
Max Series Fuse Rating	15A

MECHANICAL CHARACTERISTICS

Front cover (material / thickness)	low-iron, high transmission, tempered AR coated glass, 3.2mm
Backsheet (color)	white
Solar Cell (quantity / material / dimension)	60(6*10), polycrystalline, 156.75*156.75mm /158.75*158.75mm
Frame (material / color)	anodized aluminum alloy, silver
Junction box (protection degree)	IP 67, 3 Schottky bypass diodes
Cables & Plug connectors	900mm, 4mm ² & MC4 compatible
Module Dimensions (L / W / H)	1640*992*35mm/40mm
Module Weight	18.3/18.75kg

PACKING DETAILS

Container	20' GP	40' GP
Pieces per pallet	30/27PCS	30/27PCS
Pallets per container	14/12P	28P
Pieces per container	400/324PCS	840/756PCS



QJ SOLAR Cixi City Rixing Electronics Co., Ltd.

Add: Jietang Industrial Park, Zhouxiang Town, Cixi City, Zhejiang Province, China.
Tel: 86-574-63441748 Fax: 86-574-63456148
Email: sales@qjsolar.com Web.: www.qjsolar.com

