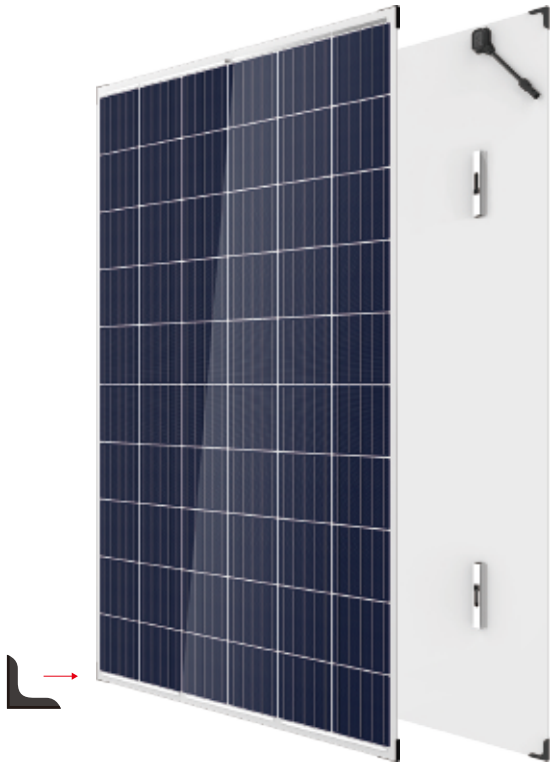
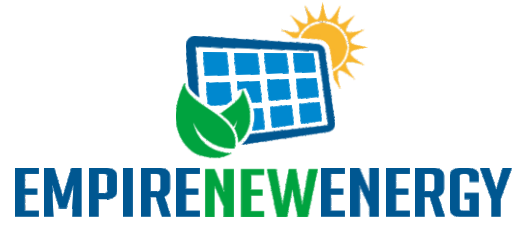


EMP-\*\*\*P60D  
POWER OUTPUT RANGE  
**265-285**



POWER TOLERANCE

0-+5W



MAXIMUM EFFICIENCY

17.3%



• Increased module robustness to minimize micro-cracks



Pass class A fire test



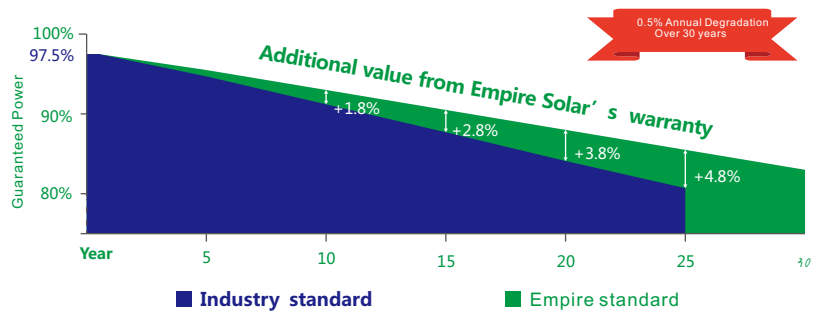
Higher maximum system voltage reduces BOS costs  
30 year linear warranty  
0.5% annual degradation  
Low thermal coefficients for more energy production at higher temperatures

**Comprehensive Products And System Certificates**

IEC61215/IEC61730/UL1703/IEC61701/IEC62716  
ISO 9001: Quality Management System  
ISO 14001: Environmental Management System  
ISO 18001: Occupation Health and Safety

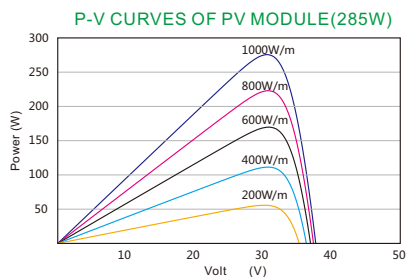
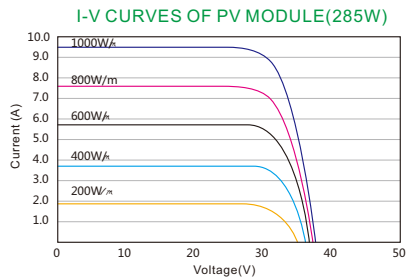
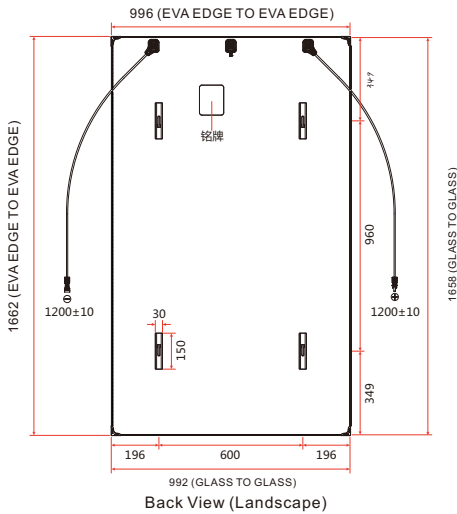
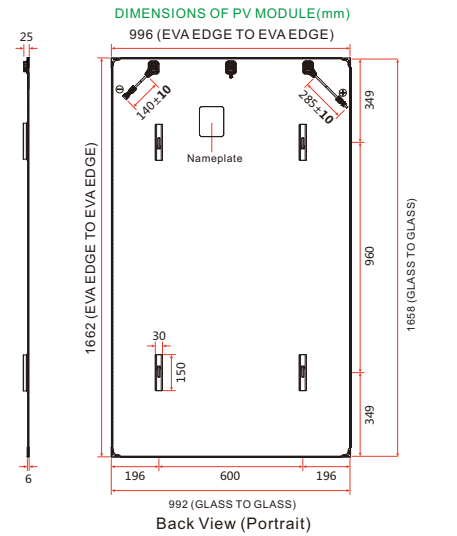


**Empire Solar's Linear Performance Warranty**





## EMP- ( 265-285 ) P60D



### ELECTRICAL DATA (STC)

Peak Power Watts- $P_{MAX}$ (Wp)	265	270	275	280	285
Power Tolerance	±3%				
Binning Tolerance	0~+5				
Maximum Power Voltage- $V_{MPP}$ (V)	31.0V	31.3V	31.7V	32.0V	32.3V
Maximum Power Current- $I_{MPP}$ (A)	8.56A	8.63A	8.69A	8.76A	8.83A
Open Circuit Voltage- $V_{OC}$ (V) (±2%)	38.2V	38.5V	38.7V	39.0V	39.3V
Short Circuit Current- $I_{SC}$ (A) (±2%)	9.04A	9.09A	9.17A	9.25A	9.30A
Module Efficiency $\eta_m$ (%)	16.1%	16.4%	16.7%	17.0%	17.3%

STC: Irradiance 1000W/m<sup>2</sup>, Cell Temperature 25°C, Air Mass AM1.5.

### ELECTRICAL DATA (NOCT)

Solar Cells	Multicrystalline 156.75 × 156.75 mm (6 inches)
Cell Orientation	60 cells (6 × 10)
Module Dimensions	1658×992×6mm
	1662 × 996 × 6 mm with edge banding
	1664 × 998 × 7.6 mm with corner protector
Weight	23.5kg
Front Glass	2.5 mm High Transmission, AR Coated Heat Strengthened Glass
Interlayer	EVA/POE
Back Glass	2.5 mm Heat Strengthened Glass
Frame	Frameless
J-Box	IP 67 or IP 68 rated
Cables	Photovoltaic Technology Cable 4.0 mm <sup>2</sup>
	Portrait: 140/285 mm , Landscape: 1200/1200 mm
Connector	05-8

### TEMPERATURE RATINGS

Temperature Coefficient of $P_{MAX}$	-0.37%/°C
Temperature Coefficient of $V_{OC}$	-0.29%/°C
Temperature Coefficient of $I_{SC}$	0.05%/°C

### MAXIMUM RATINGS

Operational Temperature	-40 + 85°C
Maximum System Voltage	1000V
Max Series Fuse Rating	15A

(DO NOT connect Fuse in Combiner Box with two or more strings in parallel connection)

### WARRANTY

- 10 year Product Workmanship Warranty
- 30 year Linear Power Warranty

### PACKAGING CONFIGURATION

- Modules per box: 33 pieces
- Modules per 40' container: 792 pieces