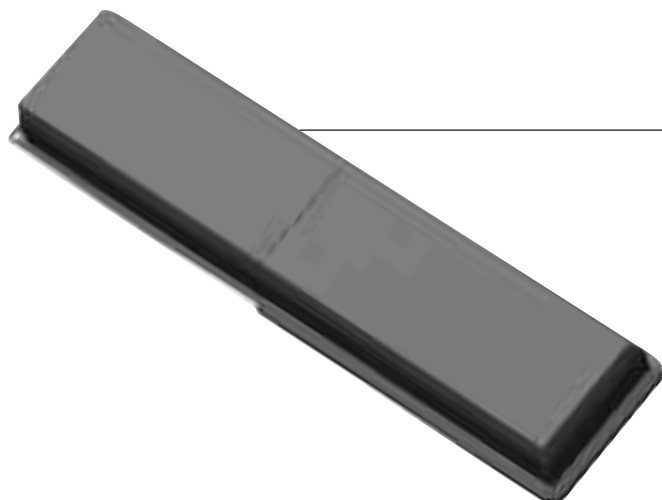


Single module solar inverter (DC/AC)



- **230 V ac output current**
- **95% efficiency**
- **High reduction of mismatching effect**
- **No system's partial shadowing problems**

Each high concentration module has its own high efficiency inverter. This allows the maximum possible energy yield of the HCPV generator, since every single module is independent and there is no problem of module shadowing, mismatching or misalignment. Each module inverter is a complete DC/AC grid connected converter with 230V single phase output, efficiency greater than 95%. The inverters are connected to the three phase junction box for the connection to the HCPV generator to the 400V grid.

HCPV generator AC output

three phase 400V system
four wires (R, S, T + neutral conductor) + protection earth conductor
nominal AC power 8.16 kW

Technical details

	Unit	value
Nominal DC input voltage	V _{cc}	176
PV voltage range, MPPT (Input voltage range)	V _{cc}	130÷200
Max DC input voltage	V _{cc}	250
Nominal input current	A	0.96
Max input current	A	1.5
Nominal input power	W	170
Max input power	W	200
Nominal output power	W	160
Output voltage U	V _{ac}	230
Output current	A	0.69
Max output shortcircuit current	A	1.5
AC frequency	Hz	50 +/- 2%
Power factor		0.99
Max efficiency	%	95
European weighted efficiency	%	93
Consumption in standby mode (night mode)	W	0.2W
Size	mm	t.b.d.
Operating temperature	°C	-20 ÷ +60
Weight	Kg	t.b.d.
MTBF	hours (a 20°C)	t.b.d.
Firmware version		t.b.d.
Brand		Beghelli S.p.A.
Model		t.b.d.

