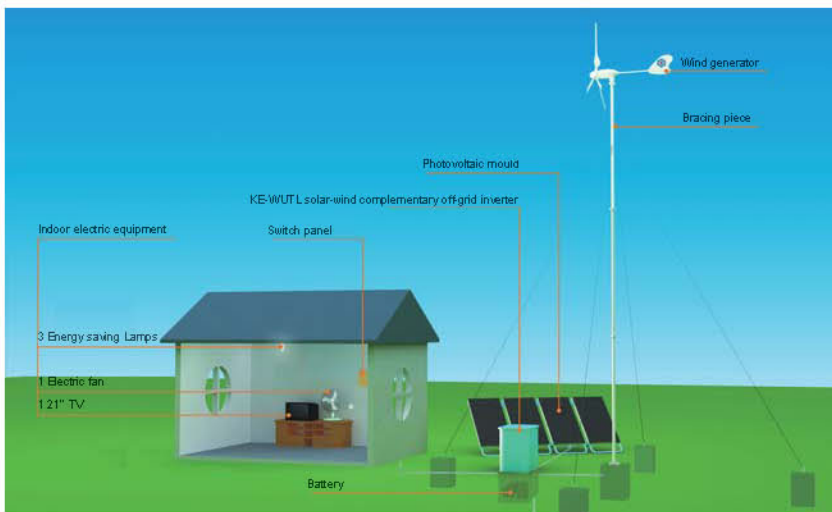


KE-WUTL Solar-wind Complementary Off-grid Inverter

KE-WUTL solar-wind complementary off-grid inverter widely applies to remote areas with no power system and in scattered population areas, which combines wind power generation and photovoltaic generation to provide users with continuous alternating current. It works well with any load, such as refrigerator, microwave oven, electric oven, washing machine, water pumps etc.



Parameter Table

Parameter	Model	KE- WU1K6TL	KE- WU2K2TL
DV Operating Voltage		24V	
DV Operating Voltage Range		21.6V—32V	
Output Capacity		1600VA	2200VA
Rated Load		1500W	2000W
No load loss		10W	12W
Output AC Voltage		220V±2%	
Output Wave Type		sine wave	
Output Voltage Frequency		50±0.1Hz	
Max. Conversion Efficiency		93%	
Operating Temperature		-20℃.—40℃.	
Dimension		550mm×306mm×160mm	
Weight		15 kg	18 kg
Feature		available for any load, like refrigerator, microwave oven, electric baking pan, electric oven, washing machine, pump.	