



水泥地面角铝支架 (载重式)

产品说明/DESCRIPTION:

- 安装位置/Installation place:
地面/平面屋顶/Ground / flat roof
- 斜面支架组件/Module slop:
根据实际需求/According to the practical demand
- 风力承载能力/Wind load:
40m/s、32.5kg/m²、13级
- 雪载承受力/Snow load:
70kg/m²
- 支架类型/Module type
框架/Frame
- 材料/Material:
铝型材/Aluminium profile
- 颜色/Colour:
本色/Natural
- 使用年限/Warranty time:
25 years.

本系统由以下零部件组成/This system consists of the following components:



ADVANTAGES:

1. 多样化应用/Diversified Application.
2. 通用的兼容性/Universal Compatibility.
3. 容易便捷安装/Easy and flexible Installation.
4. 可以大量安装太阳能组件/The quantity of the modules that could be installed is large.

工程实例照片



1 第一步/First step

The angle aluminum bottom bracing, ground frame by a connecting piece and a bolt, as shown below: 将角铝底撑、地面框用连接件及螺栓固定, 如下图:

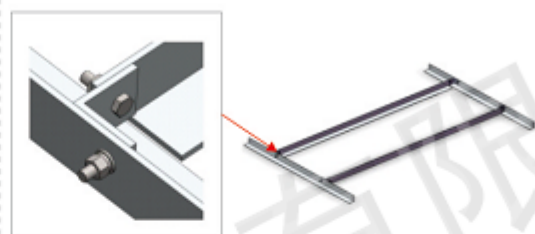


Figure 1

2 第二步/Second step

Then will cement the heavy pressure on aluminum angle ground frame; the following chart: 然后将水泥重物压在角铝地面框上; 如下图:

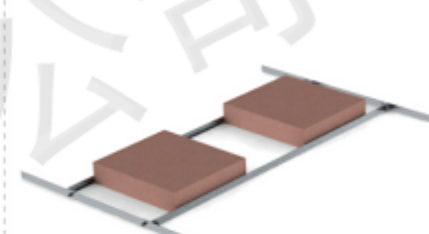


Figure 2

3 第三步/Third step

Then M8 will bolt angle aluminum front supporting and aluminum angle brace is fixed on the bottom support on aluminum angle. The following diagram: 然后用M8的螺栓将角铝前撑和角铝后撑固定在角铝底撑上。如下图:

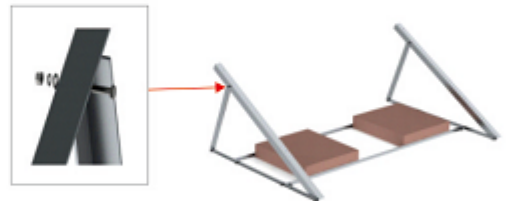


Figure 3

4 第四步/Fourth step

The guide for M8*25T type bolt is fixed on the angle aluminum front support, as shown below: 将导轨用M8*25T型螺栓固定在角铝前撑上; 如下图:

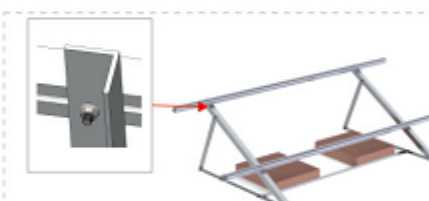


Figure 4

5 第五步/Fifth step

The component side pressing block and the middle block is fixed on the guide rail, as shown below: 将组件用边压块及中压块固定在导轨上, 如下图:

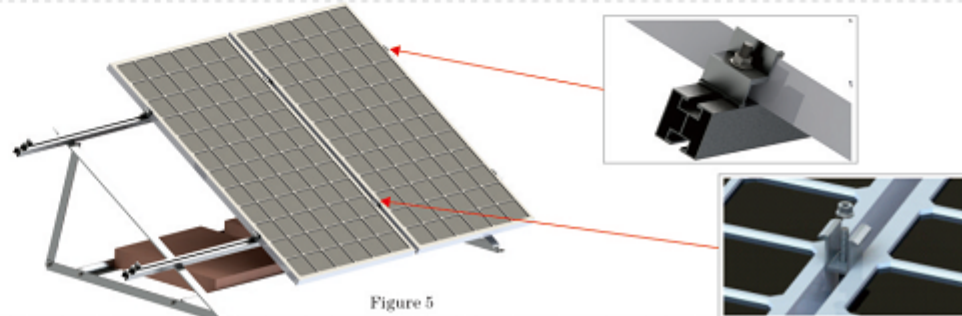


Figure 5

备注: 具体安装尺寸参考所给出的工程图。 Note: the specific installation size reference given by the engineering drawings.