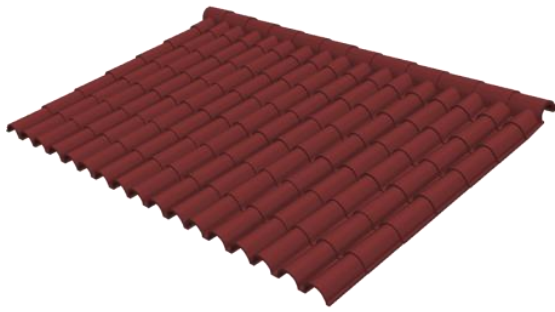




# Aluminum Tile Roof Racking System

Residential Commercial



## Description

Super Solar tile roof racking system is highly tailored to meet the clients' specific needs. It can be used for framed or frameless modules. Super Solar has experienced engineer and sales teams to provide excellent products and service.

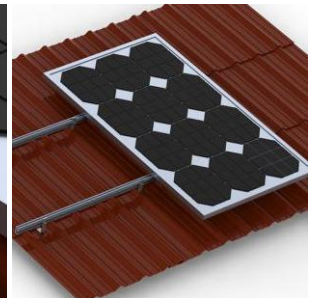
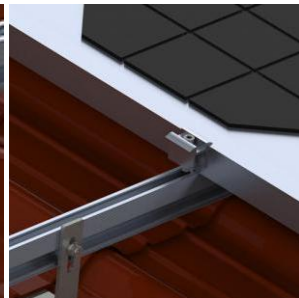
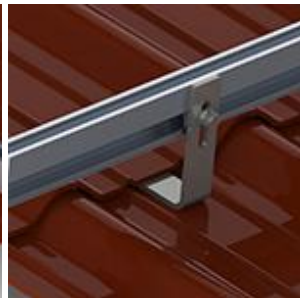
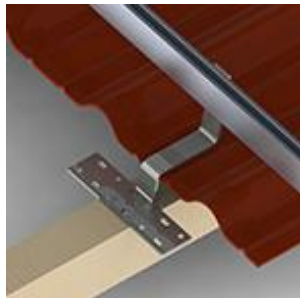
## Benefits

- **Economical and practical**

The system is easy to install, which can save the cost and time on-site.

- **Compatible and reliable**

The main material of this system is anodized aluminum AL6005-T5, and the design follows by international load standards. Also, we guarantee a 12 years warranty. And its service life is more than 25 years.



## Technical Information

Installation site	Tile Rooftop
Tilt angle	From flushed with the roof up to 15 degrees
Building height	Up to 20 meters
Max wind speed	Up to 60 m/s
Snow load	Up to 1.4 KN/m <sup>2</sup>
Module arrangement	In rows or columns
Main material	Aluminum with 12μm anodizing surface finish
Fastener material	Stainless steel SUS304
Standards	Relative national regulations
Quality assurance	12 years warranty, over 25 years service life
Others	As required





# Aluminum Tin Roof Racking System

Residential Commercial

## Benefits

- **Economical and practical**

The system is easy to install, which can save the cost and time on-site.

- **Compatible and reliable**

The main material of the system is anodized aluminum AL6005-T5, and the fastener is made of 304 grade stainless steel. And each L-foot is cooperated with an EPDM waterproof pad.



## Description

Super Solar tile roof racking system is highly tailored to meet the clients' specific needs. It can be used for framed or frameless modules. Super Solar has experienced engineer and sales teams to provide excellent products and service.



## Technical Information

Installation site	Tin Rooftop
Tilt angle	From flushed with the roof up to 15 degrees
Building height	Up to 20 meters
Max wind speed	Up to 60 m/s
Snow load	Up to 1.4 KN/m <sup>2</sup>
Module arrangement	In rows or columns
Main material	Aluminum with 12μm anodizing surface finish
Fastener material	Stainless steel SUS304
Standards	Relative national regulations
Quality assurance	12 years warranty, over 25 years service life
Others	As required