

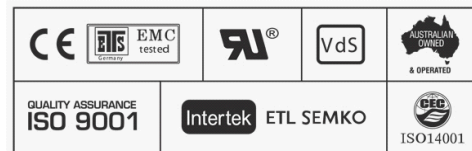
Specifications

Part Number	CBC12V250AH	
Nominal Voltage	12 Volt	
Nominal Capacity (20 HR)	250 AH	
CCA	1600	
Dimension	Length	522 +/-2mm (20.51 inches)
	Width	268 +/-2mm (10.53 inches)
	Container Height	220 +/-2mm (8.65 inches)
	Total Height	226 +/-2mm (8.88 inches)
Approx Weight	73 kg (160.89lbs)	
Terminal	T11	
Terminal Torque	11 - 14.7 Nm	
Container Material	ABS Fire Retardant	
Rated Capacity	260.0 AH / 13.0A	(20hr, 1.80V/cell, 25°C/77°F)
	250.0 AH / 25.0A	(10hr, 1.80V/cell, 25°C/77°F)
	215.4 AH / 43.0A	(5hr, 1.75V/cell, 25°C/77°F)
	195.2 AH / 65.05A	(3hr, 1.75V/cell, 25°C/77°F)
	152.5 AH / 152.5A	(1hr, 1.60V/cell, 25°C/77°F)
Plate Type	Advanced Cycle Alloy	
Separator Type	Absorbed Glass Matt	
Max. Discharge Current	2500A (5s)	
Short Circuit Current	5000	
Internal Resistance	Approx 2.5mΩ	
Warranty - Cyclic Use	12 Months	
Warranty - Standby & Backup Power	36 Months	
Warranty - Marine	12 Months	
Warranty - Starting	12 Months	
Warranty - Solar	12 Months	
Operating Temp. Range	Discharge	-15 ~ 50°C (5 ~ 122°F)
	Charge	0 ~ 40°C (32 ~ 104°F)
	Storage	-15 ~ 40°C (5 ~ 104°F)
Nominal Operating Temp. Range	25°C +/-3° (77°F +/-5°)	
Cycle Use	Initial Charging Current less than 75.0A. Voltage 14.4V ~ 15.0V at 25°C (77°F) Temp. Coefficient -30mV/°C	
Standby Use	No limit on Initial Charging Current Voltage 13.5V ~ 13.8V at 25°C (77°F)Temp. Coefficient -20mV/°C	
Capacity affected by temperature	40°C (104°F)	1.03
	25°C (77°F)	1
	0°C (32°F)	0.86
Self Discharge	Fusion CBC Series batteries can be stored for up to 6 months at 25° C (77°F) and then a freshening charge is required. For higher temperatures the time interval will be shorter.	

NO IMAGE AVAILABLE

Applications

- * Emergency Lighting Systems
- * Fire & Security Systems
- * Cars & other Starting Applications
- * Marine Equipment
- * Caravans, Campervans & Motorhomes
- * Medical Equipment
- * Power Tools
- * Toys
- * Uninterruptible Power Supply (UPS)
- * Portable Power
- * Emergency Backup Power Supply
- * Railway Signal
- * Aircraft Signal
- * Communication Power Supply
- * DC Power Supply
- * Solar Power Stations
- * Pump Systems



Constant Current Discharge (Amperes) at 25°C (77°F)

F.V Time	5min	10min	15min	20min	30min	45min	1h	2h	3h	4h	5h	6h	8h	10h	20h
1.85V/cell	427.9	336.4	286.1	239.3	190.2	143.9	117.9	75.1	59.4	48.5	39.1	34	27.6	23.6	12.88
1.80V/cell	-	429.8	345.7	282.9	224.4	167.4	132	81.9	63.9	51.8	42	36.5	29.3	25	13
1.75V/cell	-	472.3	377.6	304.3	233	173.7	138.1	85	65.1	52.9	43	37.5	29.8	25.3	13.13
1.70V/cell	-	-	403.1	319.8	242.5	180.7	142.5	88.4	66.9	54.3	44.2	38.3	30.2	25.5	13.38
1.65V/cell	-	-	428.6	339.7	255.8	185.2	147.3	90.8	69.7	56.2	45.4	39.1	30.7	26	13.55
1.60V/cell	-	-	458.4	361.9	270.1	193	152.5	93.9	71.9	58	46.9	40	31	26.3	13.63

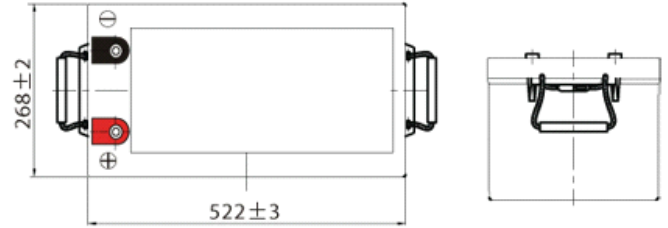
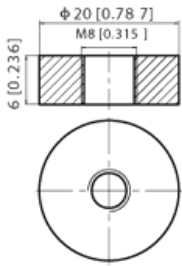
Constant Power Discharge (Amperes) at 25°C (77°F)

F.V Time	5min	10min	15min	20min	30min	45min	1h	2h	3h	4h	5h	6h	8h	10h	20h
1.85V/cell	782.3	621.4	533.8	451	362.5	276.7	227.3	145.8	115.7	94.8	76.6	66.9	54.5	46.7	25.5
1.80V/cell	-	784.6	636.3	525.3	421.2	319.3	253.3	158	123.8	100.7	81.9	71.5	57.7	49.4	25.7
1.75V/cell	-	848.3	686.5	559.7	433.6	328.2	263.8	163.3	125.6	102.6	83.8	73.2	58.5	49.8	25.9
1.70V/cell	-	-	722.7	583.8	448.8	340	271.2	169.4	128.9	105.1	85.7	74.6	59.3	50.3	26.4
1.65V/cell	-	-	762.6	615.6	469.6	345.4	278.3	173.2	133.7	108.3	87.8	76	60.1	51.2	26.7
1.60V/cell	-	-	802.1	648.6	492.3	358	286.7	178.1	137.2	111.3	90.4	77.4	60.5	51.7	26.8

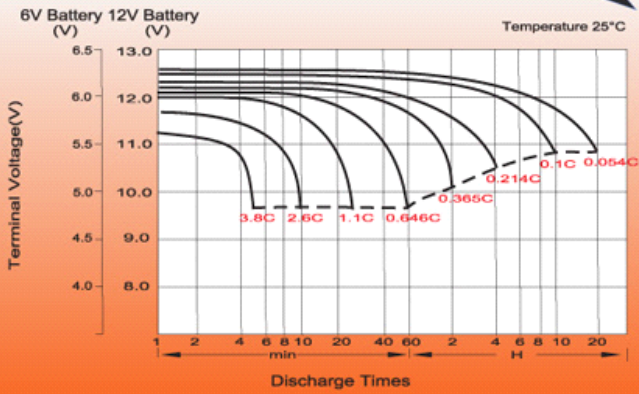
Dimensions

T11 Terminal

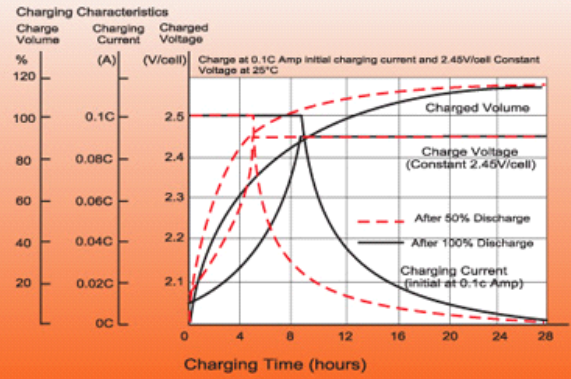
Unit: mm [inches]



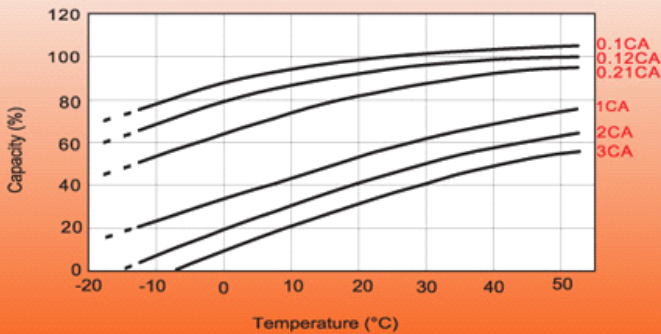
Discharge Characteristics



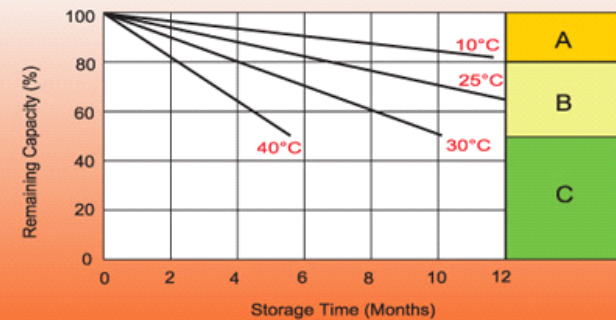
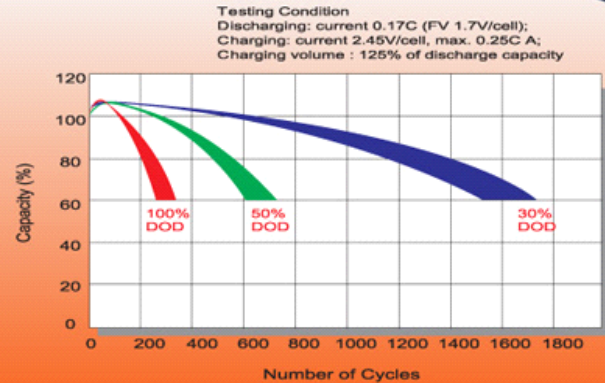
Charging Characteristics (cycle use)



Temperature Effects in Relation to Battery Capacity



Cycle Life in Relation to Depth of Discharge



Self Discharge Characteristics

- A** No supplementary charge required.
(Carry out supplementary charge before use if 100% capacity is required).
- B** Supplementary charge required before use. Optional charging way as below:
 1. Charged for above 3 days at limited current 0.25C A and constant voltage 2.25V/cell.
 2. Charged for above 20 hours at limited current 0.25C A and constant voltage 2.45V/cell.
 3. Charged for 8-10 hours at limited current 0.05C A.
- C** Supplementary charge may often fail to recover the capacity.
The battery should never be left standing till this is reached.

Head Office

Unit 30
76 Hume Highway
LANSVALE NSW 2166
Tel: (02) 9755 7851 Fax: (02) 9755 7852
www.fusionagmbatteries.com.au

