

UCG3000-2

2V 3000AH

Deep Cycle

Ultracell®

Quality in Every Language

UCG3000-2



Physical Specification

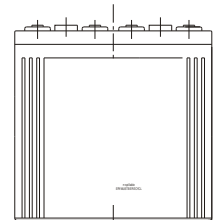
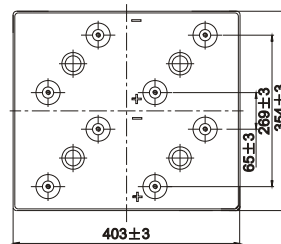
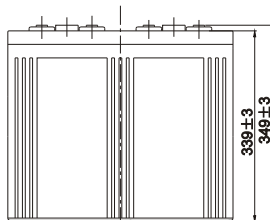
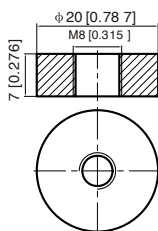
Part Number	UCG3000-2
Length	709 ± 2 mm
Width	350 ± 2 mm
Container Height	337 ± 2 mm
Total Height (with terminal)	349 ± 2 mm
Approx Weight	190 kg

Specifications

	Nominal Voltage	2V
	Nominal Capacity (20HR)	3000AH
Terminal Type	Standard Terminal	F11
Container Material	Standard Option	ABS
	Flame Retardant Option (FR)	UL94-V0
Rated Capacity	20hr, 1.80V/cell, 25°C	3200.0 AH/160.0A
	10hr, 1.80V/cell, 25°C	3000 AH/300.0A
	5hr, 1.75V/cell, 25°C	2580.0 AH/516.0A
	1hr, 1.60V/cell, 25°C	1760.0 AH/1760.0A
Max Discharge Current	21000A (5s)	
Internal Resistance	Approx 0.23m Ω	
Discharge Characteristics	Operating Temp. Range	Discharge: -20 ~ 55°C Charge: 0 ~ 40°C Storage: -20 ~ 50°C
	Nominal Operating Temp. Range	25 ± 3°C
	Cycle Use	Initial Charging Current less than 750.0A. Voltage 2.40V ~ 2.50V Temp. Coefficient -5mV/°C
	Standby Use	No limit on Initial Charging Current Voltage 2.25V ~ 2.30V Temp. Coefficient -3mV/°C
	Capacity affect by Temperature	40°C 103% 25°C 100% 0°C 86%
Design Floating Life at 20°C	15 Years	
Self Discharge	Ultracell batteries may be stored for up to 6 months at 25°C(77°F) and then a refresh charge is required. For higher temperatures the time interval will be shorter.	

Dimensions

F11 Terminal



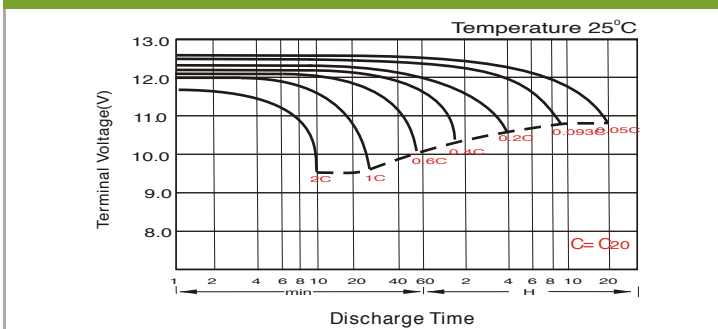
Constant Current Discharge (Amperes) at 20°C

F.V/Time	20min	30min	45min	1h	2h	3h	4h	5h	6h	7h	8h	9h	10h	20h
1.85V/cell	2610.0	2052.0	1564.0	1359.0	867.0	661.0	547.5	472.8	408.0	361.3	325.9	297.7	281.7	153.6
1.80V/cell	2997.0	2292.0	1728.0	1500.0	939.0	708.0	580.5	496.8	428.5	378.0	341.6	313.3	294.3	160.0
1.75V/cell	3366.0	2520.0	1864.0	1602.0	994.5	748.0	608.3	516.0	443.5	391.7	352.5	322.7	300.0	163.2
1.70V/cell	3627.0	2700.0	1980.0	1698.0	1054.5	779.0	627.8	531.6	459.0	404.6	363.0	331.0	307.2	165.5
1.67V/cell	3771.0	2808.0	2052.0	1760.0	1081.5	804.0	643.5	543.0	466.5	410.6	368.3	335.7	310.8	167.0
1.60V/cell	/	3000.0	2204.0	1869.0	1125.0	836.0	667.5	559.8	478.0	419.1	375.0	342.7	316.8	169.4

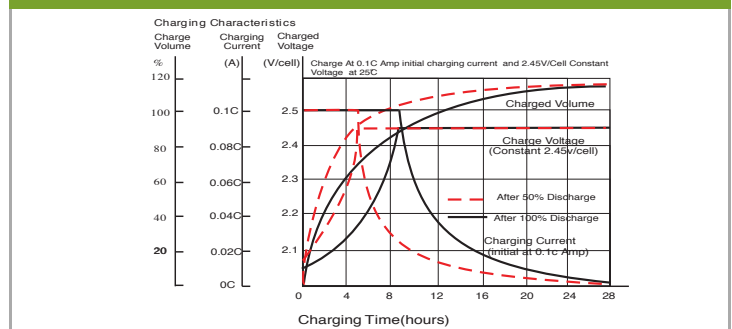
Constant Power Discharge (Watts) at 20°C

F.V/Time	20min	30min	45min	1h	2h	3h	4h	5h	6h	7h	8h	9h	10h	20h
1.85V/cell	4956.4	3923.4	3009.1	2625.6	1681.1	1285.0	1068.7	926.2	802.1	712.1	643.6	588.5	557.5	304.3
1.80V/cell	5616.4	4341.0	3293.6	2883.0	1811.3	1371.4	1128.5	969.8	839.4	742.4	672.7	617.9	581.2	316.5
1.75V/cell	6237.2	4720.0	3521.1	3063.0	1913.4	1445.9	1178.8	1002.6	865.7	767.4	692.7	635.7	591.9	322.5
1.70V/cell	6648.3	5022.0	3726.4	3234.7	2019.4	1501.1	1213.4	1030.8	894.6	791.3	712.2	651.4	605.5	326.6
1.67V/cell	6833.1	5152.7	3827.0	3326.1	2060.3	1542.9	1240.0	1049.1	906.4	800.6	720.7	658.9	611.7	329.2
1.60V/cell	/	5469.0	4088.4	3513.7	2133.0	1596.8	1282.3	1078.2	925.9	815.2	732.4	671.6	622.5	333.5

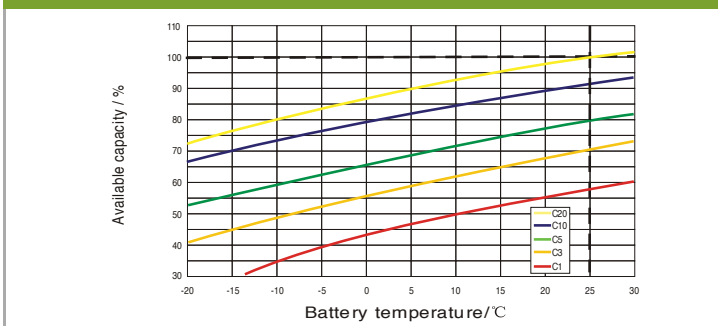
Discharge Characteristics



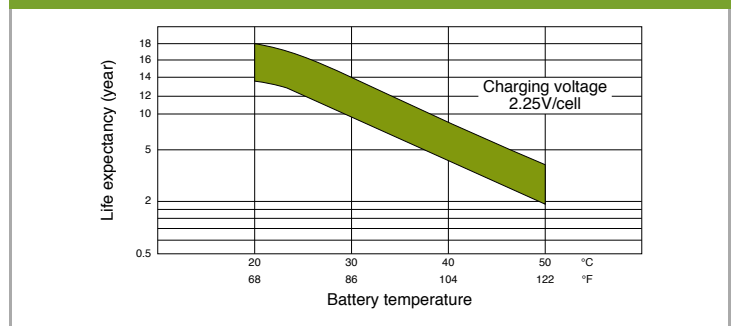
Float Charging Characteristics



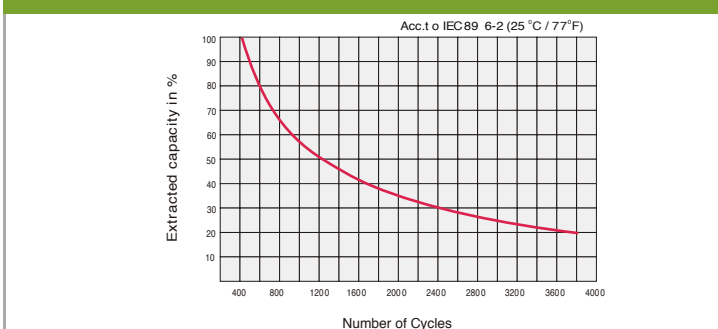
Temperature Effects in Relation to Battery Capacity



Effect of Temperature on Long Term Float Life



Cycle Life in Relation to Depth of Discharge



General Relation of Capacity VS. Storage Time

