

UCG65-12S

12V 65AH

Deep Cycle

Ultracell®

Quality in Every Language

UCG65-12S



Physical Specification

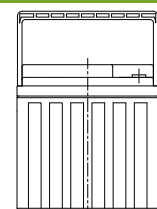
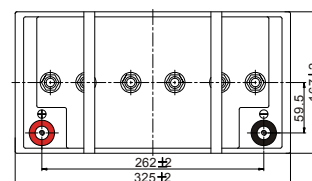
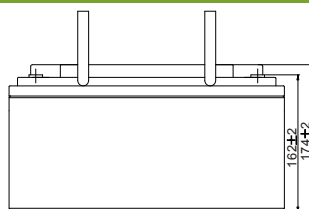
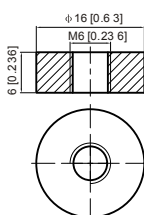
Part Number	UCG65-12S
Length	259 ± 2 mm
Width	168 ± 2 mm
Container Height	208 ± 2 mm
Total Height (with terminal)	214 ± 2 mm
Approx Weight	21.0 kg

Specifications

	Nominal Voltage	12V
	Nominal Capacity (10HR)	65.1AH
Terminal Type	Standard Terminal	F6
	Optional Terminal	-
Container Material	Standard Option	ABS
	Flame Retardant Option (FR)	ABS (UL94:VO)
Rated Capacity	20hr, 1.80V/cell, 25°C	67.6 AH/3.50A
	10hr, 1.80V/cell, 25°C	65.0 AH/6.51A
	5hr, 1.75V/cell, 25°C	56.0 AH/11.2A
	1hr, 1.60V/cell, 25°C	38.5 AH/38.5A
Max Discharge Current	700A (5s)	
Internal Resistance	~6.4mΩ	
Discharge Characteristics	Operating Temp. Range	Discharge: -20 ~ 55°C
		Charge: 0 ~ 40°C
		Storage: -20 ~ 50°C
	Nominal Operating Temp. Range	25 ± 3°C
	Cycle Use	Initial Charging Current less than 17.5A. Voltage 14.4V ~ 15.0V Temp. Coefficient -30mV/°C
	Standby Use	No limit on Initial Charging Current Voltage 13.5V ~ 13.8V Temp. Coefficient -20mV/°C
Capacity affect by Temperature	40°C	103%
	25°C	100%
	0°C	86%
Design Floating Life at 20°C	15 Years	
Self Discharge	Ultracell batteries may be stored for up to 6 months at 25°C(77°F) and then a refresh charge is required. For higher temperatures the time interval will be shorter.	

Dimensions

F6 Terminal



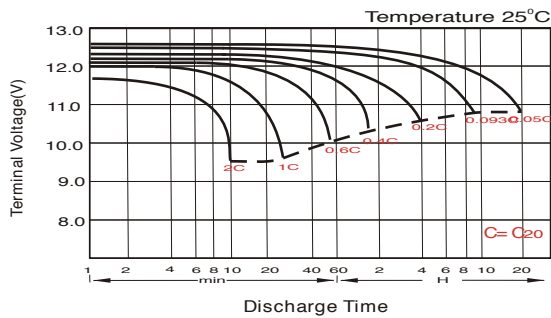
Constant Current Discharge (Amperes) at 20°C

F.V/Time	20min	30min	45min	1h	2h	3h	4h	5h	6h	7h	8h	9h	10h	20h
1.85V/cell	55.0	43.2	32.9	27.6	17.5	13.3	11.0	9.53	8.22	7.28	6.57	6.00	5.67	3.12
1.80V/cell	63.0	48.2	36.3	30.4	18.9	14.3	11.7	10.0	8.63	7.62	6.88	6.31	5.93	3.25
1.75V/cell	70.8	53.0	39.3	32.6	20.1	15.1	12.3	10.4	8.94	7.89	7.10	6.50	6.05	3.32
1.70V/cell	76.2	56.8	41.7	34.5	21.3	15.7	12.7	10.7	9.25	8.15	7.31	6.67	6.19	3.36
1.67V/cell	79.4	59.0	43.2	35.8	21.8	16.2	13.0	10.9	9.40	8.27	7.43	6.76	6.26	3.39
1.60V/cell	86.0	63.2	46.4	38.0	22.7	16.9	13.5	11.3	9.63	8.45	7.56	6.90	6.38	3.44

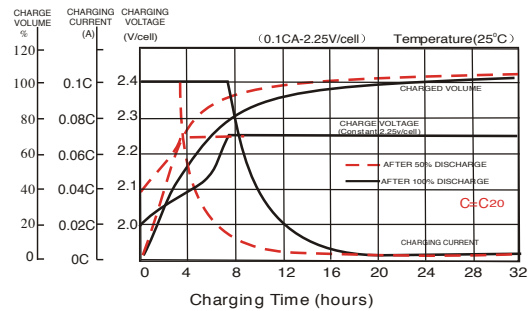
Constant Power Discharge (Watts) at 20°C

F.V/Time	20min	30min	45min	1h	2h	3h	4h	5h	6h	7h	8h	9h	10h	20h
1.85V/cell	105.3	83.2	63.9	53.7	34.2	26.1	21.7	18.8	16.3	14.5	13.1	12.0	11.3	6.23
1.80V/cell	119.0	92.1	69.9	58.9	36.8	27.9	22.9	19.7	17.0	15.1	13.7	12.5	11.8	6.48
1.75V/cell	132.2	100.3	75.0	62.8	38.9	29.4	23.9	20.4	17.6	15.6	14.1	12.9	12.0	6.60
1.70V/cell	140.9	106.5	79.1	66.0	41.0	30.5	24.7	21.0	18.2	16.1	14.5	13.2	12.3	6.68
1.67V/cell	145.0	109.5	81.3	68.1	41.9	31.3	25.2	21.3	18.4	16.3	14.6	13.4	12.4	6.74
1.60V/cell	155.4	116.1	86.7	71.9	43.4	32.4	26.0	21.9	18.8	16.6	14.9	13.6	12.6	6.82

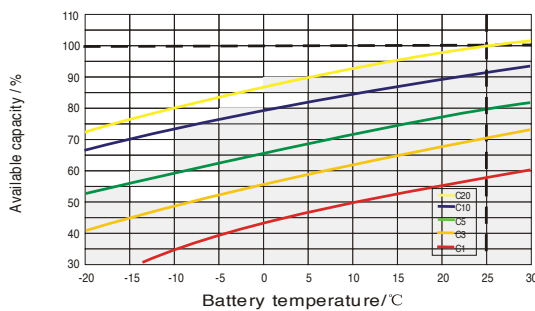
Discharge Characteristics



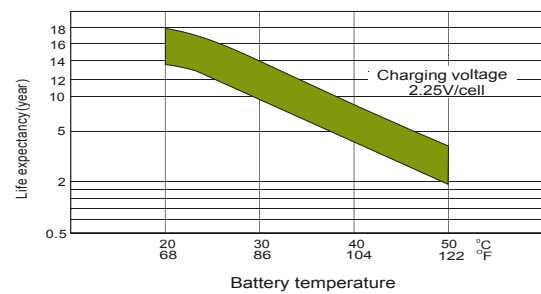
Float Charging Characteristics



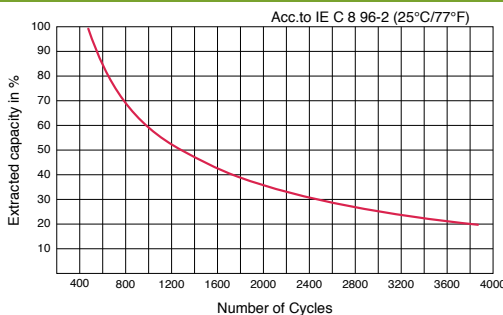
Temperature Effects in Relation to Battery Capacity



Effect of Temperature on Long Term Float Life



Cycle Life in Relation to Depth of Discharge



General Relation of Capacity VS. Storage Time

