

# UCG200-12

12V 200AH

Deep Cycle

# Ultracell®

Quality in Every Language

## UCG200-12



## Physical Specification

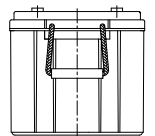
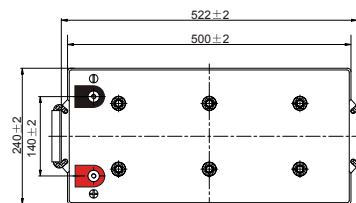
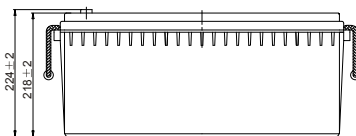
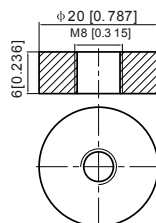
Part Number	UCG200-12
Length	522 ± 2 mm
Width	240 ± 2 mm
Container Height	218 ± 2 mm
Total Height (with terminal)	224 ± 2 mm
Approx Weight	61 kg

## Specifications

	Nominal Voltage	12V	
	Nominal Capacity 20HR)	200.0AH	
Terminal Type	Standard Terminal	F11	
	Optional Terminal	-	
Container Material	Standard Option	ABS	
	Flame Retardant Option (FR)	ABS(UL94:VO)	
Rated Capacity	20hr, 1.80V/cell, 25°C	208.0 AH/10.0A	
	10hr, 1.75V/cell, 25°C	200.0 AH/18.6A	
	5hr, 1.75V/cell, 25°C	160.0 AH/32.0A	
	1hr, 1.70V/cell, 25°C	110.0 AH/110.0A	
Max Discharge Current	1800A (5s)		
Internal Resistance	3.24mΩ		
Discharge Characteristics	Operating Temp. Range	Discharge: -20 ~ 60°C	
		Charge: 0 ~ 50°C	
		Storage: -20 ~ 50°C	
	Nominal Operating Temp. Range	25 ± 3°C	
	Cycle Use	Initial Charging Current less than -A.Voltage 14.4V ~ 15.0V Temp. Coefficient -30mV/°C	
	Standby Use	No limit on Initial Charging Current Voltage 13.5V ~ 13.8V Temp. Coefficient -20mV/°C	
Capacity affect by Temperature	40°C	103%	
	25°C	100%	
	0°C	86%	
Design Floating Life at 20°C	15 Years		
Self Discharge	Ultracell batteries may be stored for up to 9 months at 25°C(77°F) and then a refresh charge is required. For higher temperatures the time interval will be shorter.		

## Dimensions

### F11 Terminal



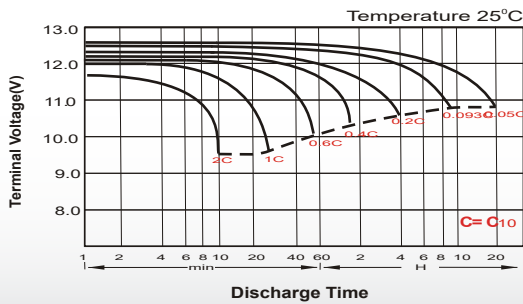
### Constant Current Discharge (Amperes) at 20°C

F.V/Time	20 min	30 min	45 min	1h	2h	3h	4h	5h	6h	7h	8h	9h	10h	20h
1.85V/cell	169.2	132.8	101.3	84.8	53.8	41.0	34.0	29.3	25.3	22.4	20.2	18.5	17.5	9.60
1.80V/cell	193.8	148.4	111.7	93.6	58.2	43.9	36.0	30.8	26.6	23.5	21.2	19.4	18.2	10.0
1.75V/cell	217.8	163.2	120.8	100.2	61.7	46.4	37.7	32.0	27.5	24.3	21.9	20.0	18.6	10.2
1.70V/cell	234.6	174.8	128.3	106.0	65.4	48.3	39.0	33.0	28.5	25.1	22.5	20.5	19.0	10.3
1.67V/cell	244.2	181.6	132.8	110.0	67.1	49.9	39.9	33.7	28.9	25.5	22.9	20.8	19.3	10.4
1.60V/cell	264.6	194.4	142.7	116.8	69.8	51.9	41.4	34.7	29.6	26.0	23.3	21.2	19.6	10.6

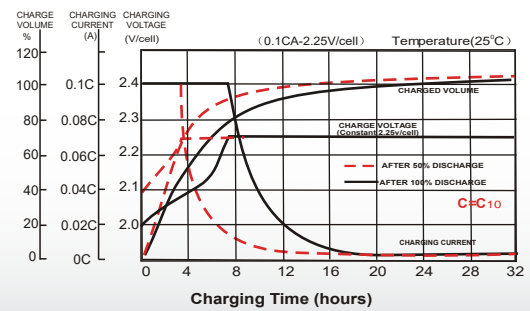
### Constant Power Discharge (Watts) at 20°C

F.V/Time	20 min	30 min	45 min	1h	2h	3h	4h	5h	6h	7h	8h	9h	10h	20h
1.85V/cell	323.8	255.9	196.5	165.1	105.1	80.3	66.8	57.9	50.1	44.5	40.2	36.8	34.8	19.2
1.80V/cell	366.1	283.3	215.1	181.3	113.3	85.8	70.5	60.6	52.4	46.4	42.0	38.6	36.3	19.9
1.75V/cell	406.9	308.7	230.8	193.1	119.6	90.4	73.6	62.7	54.1	47.9	43.3	39.7	37.0	20.3
1.70V/cell	433.5	327.8	243.3	203.1	126.2	93.9	75.9	64.5	55.9	49.4	44.5	40.7	37.8	20.5
1.67V/cell	446.2	337.0	250.2	209.6	128.8	96.4	77.5	65.7	56.7	50.0	45.1	41.1	38.2	20.7
1.60V/cell	478.1	357.3	266.8	221.3	133.4	99.8	80.2	67.5	57.8	51.0	45.8	42.0	38.9	21.0

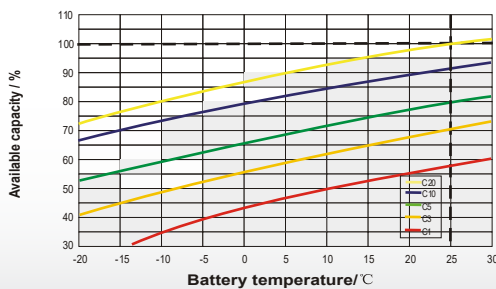
### Discharge Characteristics



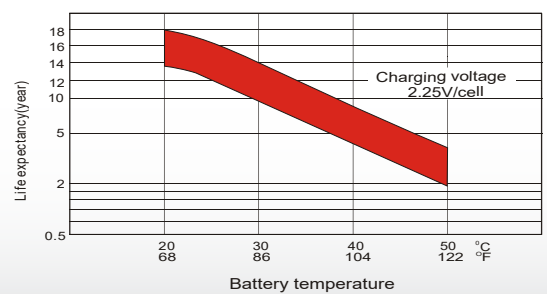
### Charging Characteristics



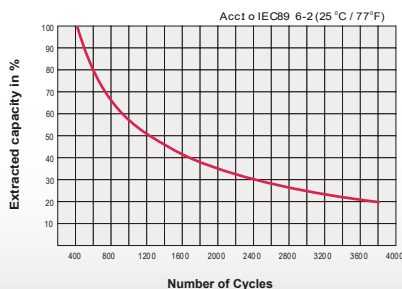
### Temperature Effects in Relation to Battery Capacity



### Effect of Temperature on Long Term Float Life



### Cycle Life in Relation to Depth of Discharge



### General Relation of Capacity VS. Storage Time

