

GENERAL FEATURES

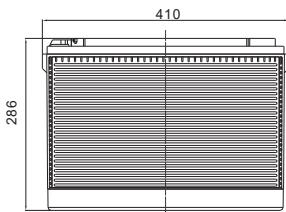
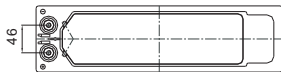
- **GEL Technology** - The success of DG batteries comes from the internationally superior Gel technology. It is ideal for standby or frequent cyclic discharge applications under extreme environments
- **Front Access Connection** - Front access connection for fast, easy installation and maintenance with standard width for 19' and 23' ETSI racks.
- **Long Service Life** - Especially designed for telecommunication use with 10+ years design life in float service. By combining the newly developed paste formula with up-to-date GEL structures, this range features 12 years design life.
- **Maintenance-Free, Non-Spillable** - Proven VRLA technology guarantees safe operation without maintenance and 'non-restricted article' status for transportation.
- **Designed-In Reliability** - Cutting-edge manufacturing and process control combined with meticulous quality assurance procedures guarantee consistent and dependable performance

PERFORMANCE SPECIFICATIONS

Nominal Voltage	12V(6 cells)	
Design Floating Life @25°C	12 Years	
Nominal Capacity @25°C	20 hour rate	110.0Ah
	5.50A to 10.50V	
	10 hour rate	95.5Ah
	9.55A to 10.80V	
Internal Resistance	5 hour rate	83.5Ah
	16.7A to 10.50V	
	3 hour rate	75.0Ah
	25.0A to 10.5V	
Energy Density (20-hr. rate)	1 hour rate	61.5Ah
	67.5A to 9.60V	
	Full Charged Battery@25°C	<7.2mΩ
Specific Energy (20-hr. rate)	102.3Wh/l	
Shelf Life (nominal capacity at 20°C)	40.0Wh/kg	
	1 Month	97%
	3 Months	91%
Max Short-Duration Discharge Current	6 Months	83%
	5 Sec	1100.0A
Standby Use Charge (Constant Voltage) @25°C	Initial Charging Current	
	Less than 22.0A	
Cycle Use Charge (Constant Voltage) @25°C	Voltage 13.6 - 13.8V	
	Initial Charging Current	
	Less than 22.0A	
Operating Temperature Range	Voltage 14.4 - 14.9V	
	Charge	-20°C to 50°C
	Discharge	-40°C to 60°C

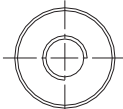
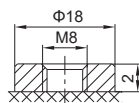
GENERAL FEATURES mm

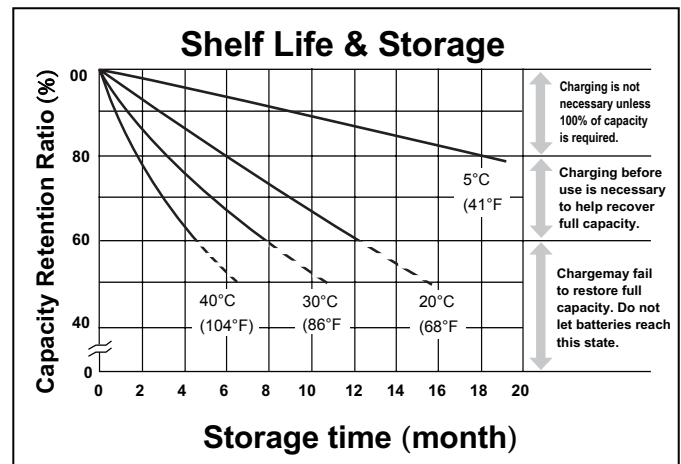
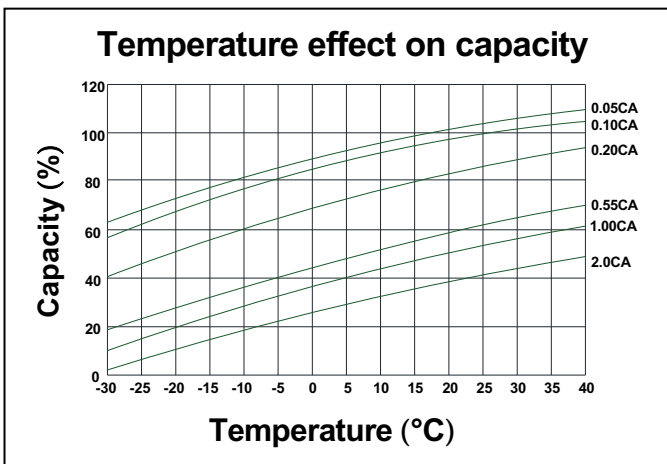
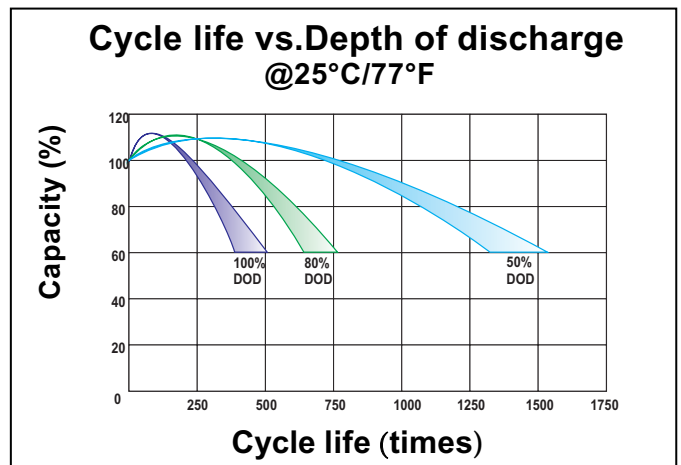
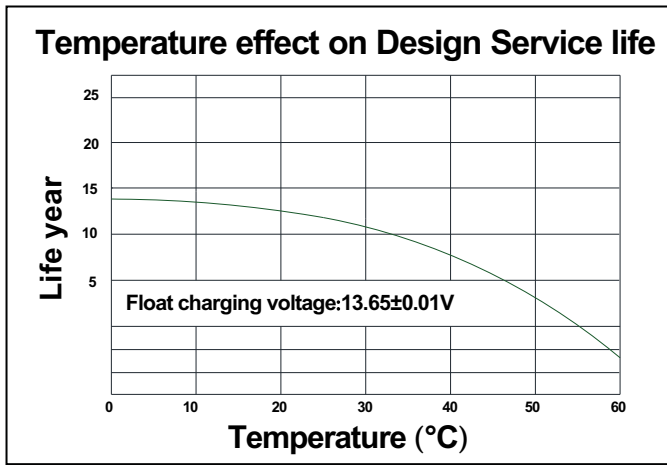
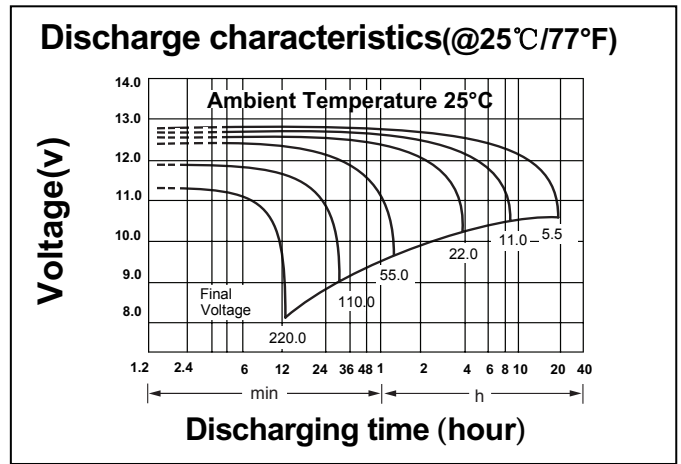
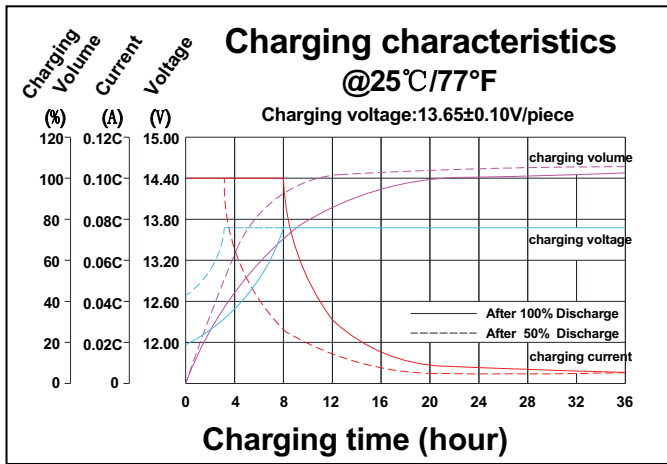
	Unit: mm		
Length	410±1	Total Height	286±1
Width	110±1	Weight(kg)	33.0±1
Height	286±1		



TERMINALS mm

F9 Terminal





CONSTANT CURRENT DISCHARGE RATINGS (Amperes at 25°C)

F.V/Time	15MIN	30MIN	1HR	2HR	3HR	4HR	5HR	8HR	10HR	20HR
1.60V	150.5	100.9	61.5	36.8	25.4	20.8	17.1	11.8	9.94	6.05
1.65V	147.4	100.0	61.2	36.5	25.3	20.7	17.0	11.7	9.84	5.83
1.70V	145.1	99.4	60.6	36.2	25.1	20.6	16.9	11.6	9.75	5.67
1.75V	139.8	97.8	60.1	36.0	25.0	20.5	16.7	11.5	9.65	5.50
1.80V	130.3	94.4	58.7	35.3	24.4	20.0	16.4	11.3	9.55	5.17
1.85V	118.3	89.3	55.7	33.8	23.3	19.0	15.7	10.8	9.27	4.95